



WORMS
E N T R E P R I S E S

PARTS CATALOG

Model
EX40

Engine Model
EX400DSK221

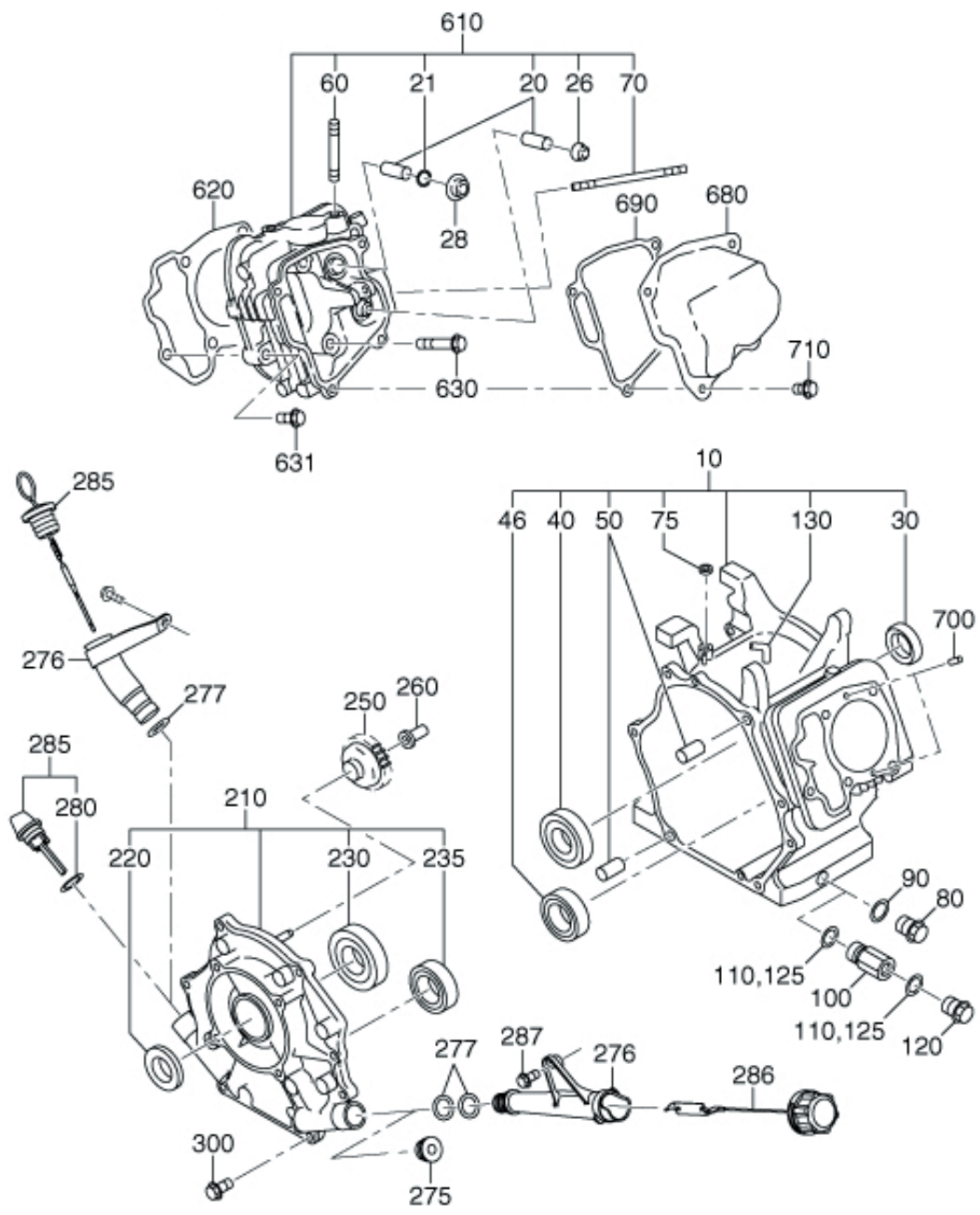
13-09-2021



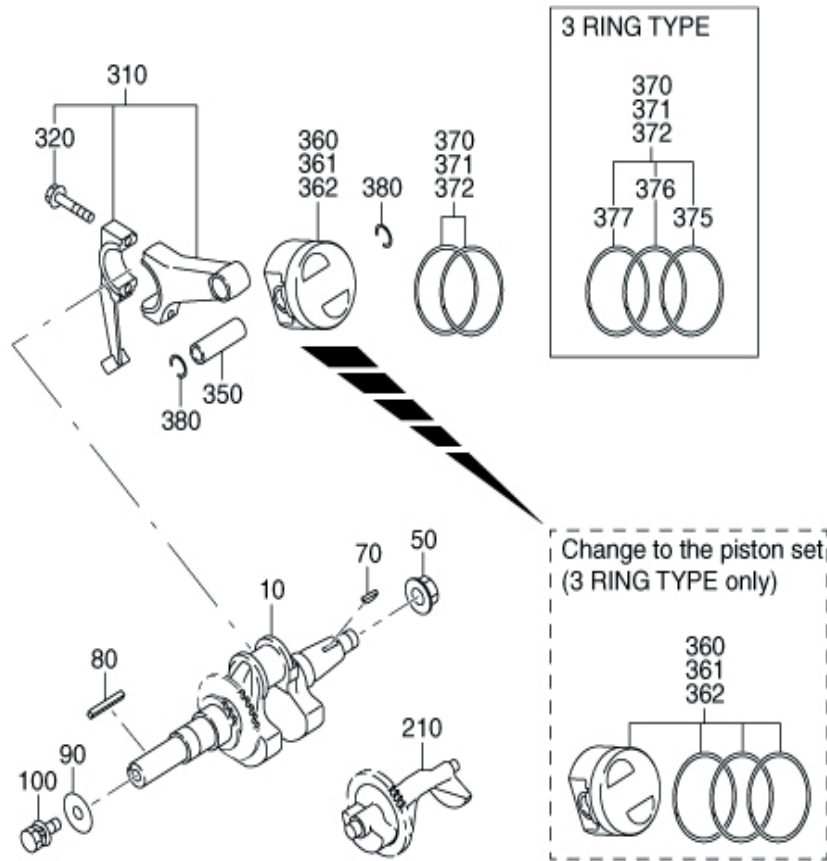
GROUP INDEX

Group Name	Page
CRANKCASE GROUP	4
CRANKSHAFT GROUP	6
INTAKE and EXHAUST GROUP.....	8
GOVERNOR GROUP	12
COOLING and STARTING GROUP	14
FUEL, LUBRICATION GROUP	18
ELECTRIC DEVICE GROUP	22
ACCESSORY GROUP	28

INDEX OF DESCRIPTION SYMBOLS			
SYMBOL	DESCRIPTION	SYMBOL	DESCRIPTION
AY	ASSEMBLY	P=	PITCH (in mm)
CP	COMPLETE	P.T.O. (PTO)	POWER TAKE OFF
EX	EXPORT (from Japan)	REF.	REFERENCE
FIG.	FIGURE	R.H. (RH)	RIGHT HAND SIDE
FR.	FRONT	RR.	REAR
"	INCH	STD.	STANDARD
INCL.	INCLUDE	SW	SWITCH
~L	LITER	T=	THICKNESS (in mm)
L=	LENGTH (in. mm)	UN	UNIT
L.H. (LH)	LEFT-HAND SIDE	U.S.	UNDER SIZE
MECH	MECHANICAL	~V	VOLTAGE
NO (NON)	NONE	~W	WATT
OPT.	OPTIONAL	W/	WITH
O.S.	OVER SIZE	W/O	WITHOUT



960- GASKET SET



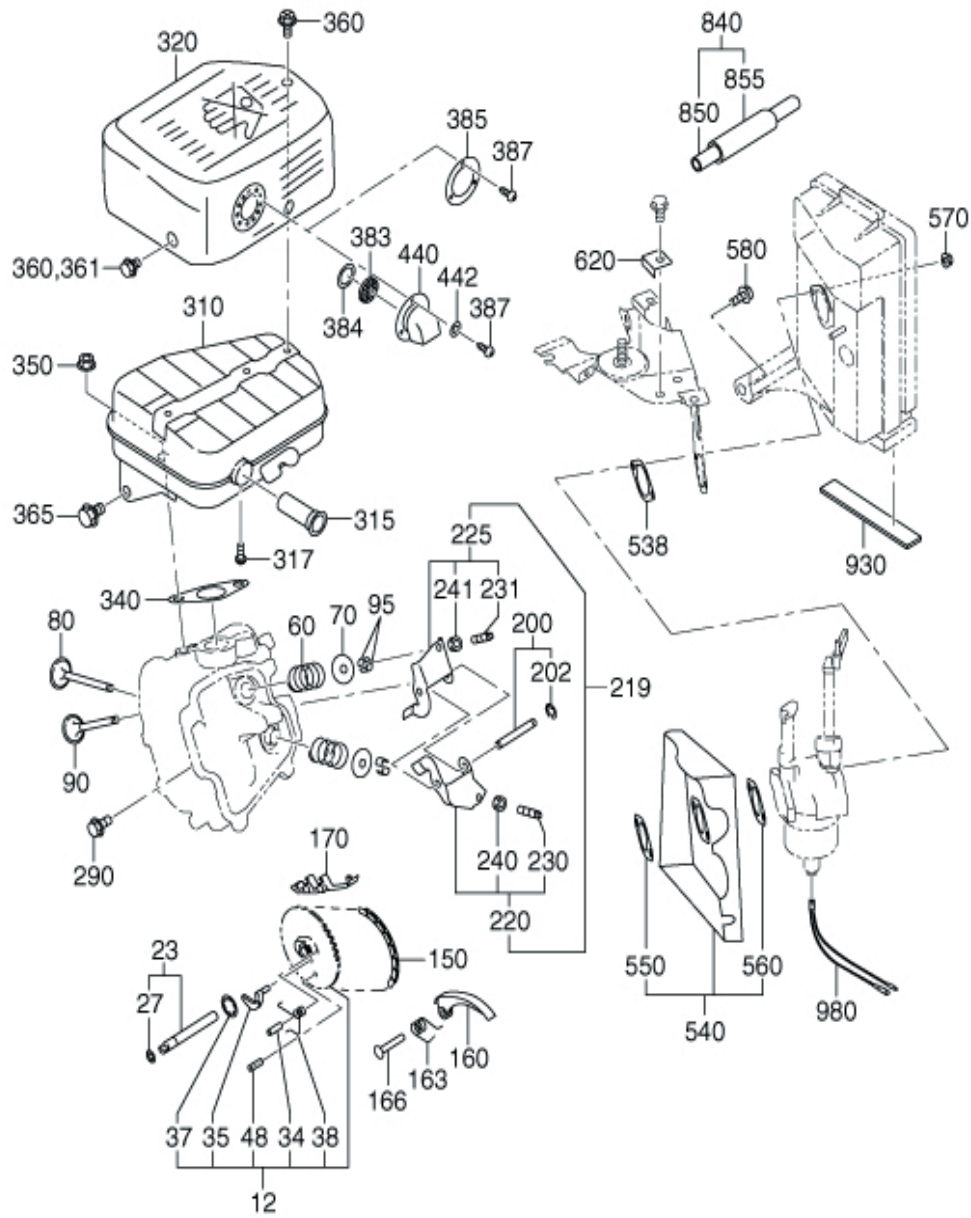
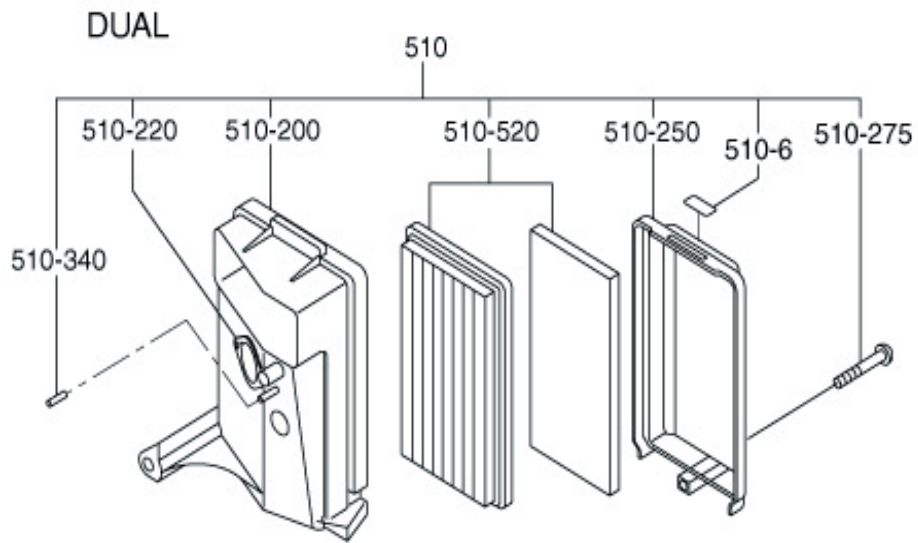


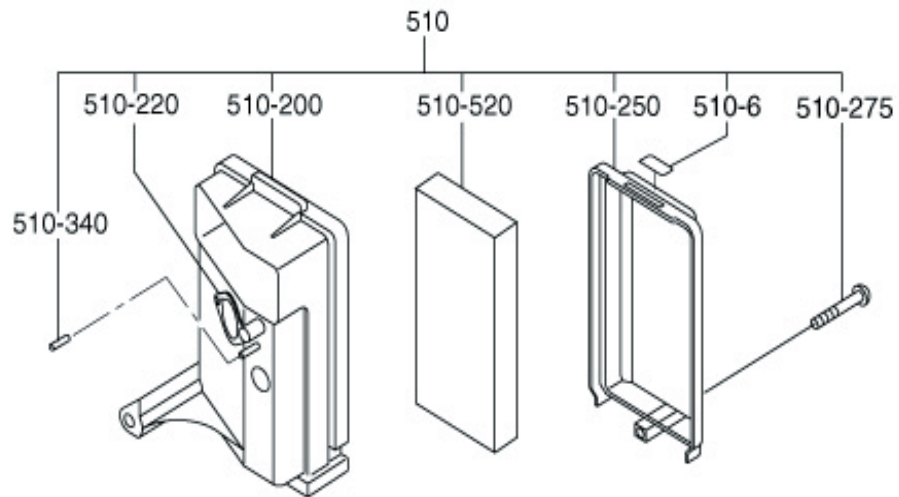
FIG. 300

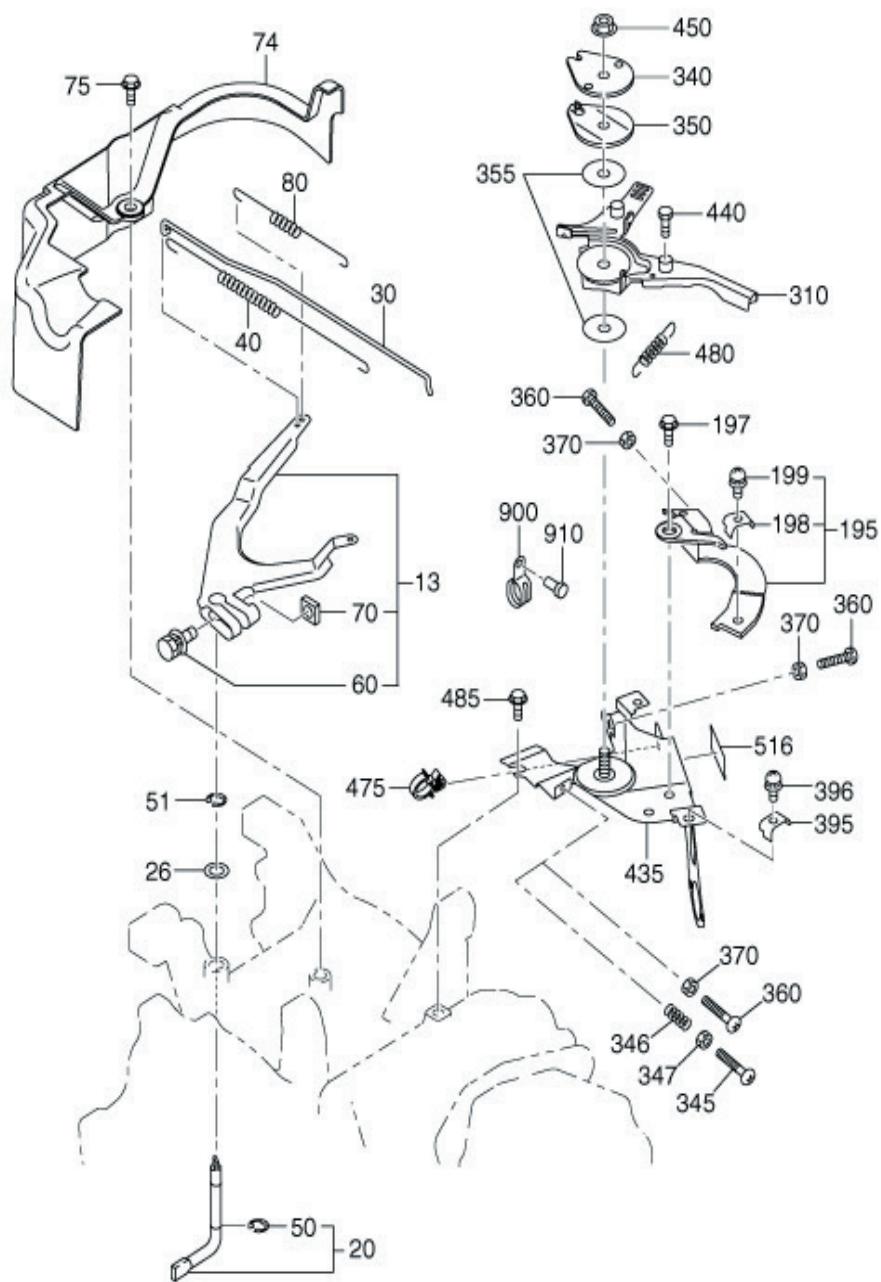
INTAKE and EXHAUST GROUP

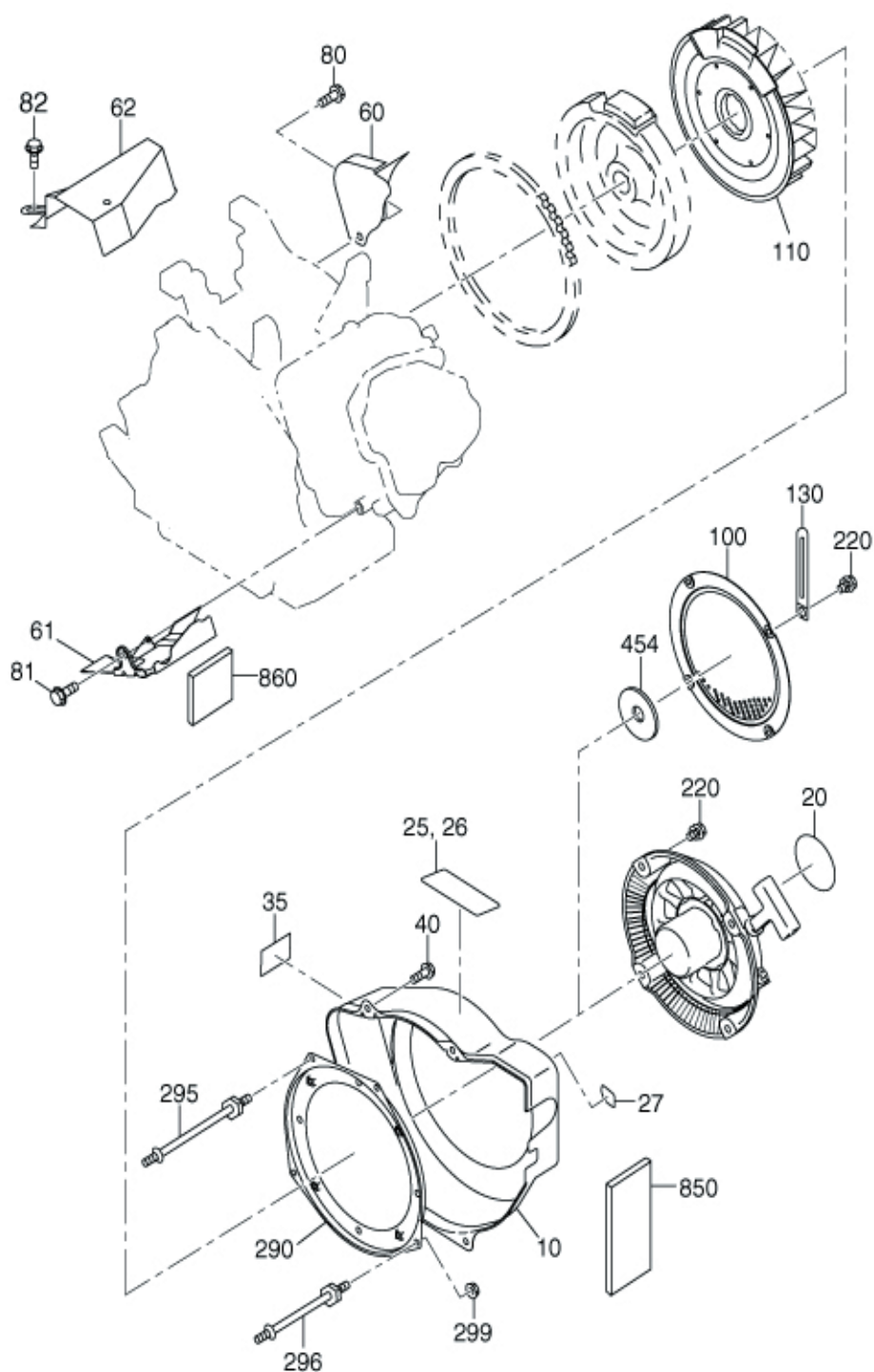
REF.	PART NUMBER	PART NAME	QTY.	REMARKS
12	22G3160100	CAMSHAFT AY	1	
23	22G3510101	PIN(CAM SHAFT)CP	1	
27	22G0280100	O-RING	1	
60	22G3361103	VALVE SPRING	2	22.2DX2.9DX37L N=6.5
70	22G3371103	SPRING RETAINER	2	
80	22G3340203	INTAKE VALVE	1	
90	22G3350203	EXHAUST VALVE	1	
95	22G3550103	COLLET-VALVE	4	
150	22G3560101	TIMING CHAIN CP	1	112LINK
160	20A3691103	TENTIONER	1	
163	20A3710103	SPRING(TENTIONER)	1	10DX1.8DX14L N=4.5
166	20A3690203	PIN(TENTIONER)	1	6DX13DX34L
170	20A3691303	CHAIN GUIDE	1	
200	22G3500101	PIN(ROCKER)CP	1	
202	22G0320300	CLIP	1	6DX12DX0.8T
220	22G3610100	ROCKER ARM(IN) AY	1	
225	22G3610200	ROCKER ARM(EX) AY	1	
290	20A0111100	FLANGE BOLT	1	M6X1.0X13DX12L
310	22G3010202	MUFFLER UN	1	LOW NOISE
315	22G3760201	SPARK ARRESTER CP	1	LOW NOISE
317	22G0140200	TAPPING SCREW	1	
320	22G3420201	MUFFLER COVER CP	1	LOW NOISE
340	22G3520103	GASKET(MUFFLER)	1	T=0.2
350	20A0185120	FLANGE NUT	2	M8X1.25X17DX7.5H
360	20A0111200	FLANGE BOLT	5	M6X1.0X14DX8L
365	22G0110400	FLANGE BOLT	1	M8X1.25X16DX16L
383	22G3723103	SUS MESH	1	35DX9.5T
385	22G3710102	TAIL SCREEN UN	1	
387	22G0140200	TAPPING SCREW	3	
440	22G3700201	DEFLECTOR CP	1	
538	22G3590303	GASKET 3	1	T=0.8
540	22G3290101	INSULATOR CP	1	
550	22G3590203	GASKET 2	1	T=0.5
560	22G3590103	GASKET 1	1	T=0.5
570	20A0185200	FLANGE NUT	2	M6X1.0X13DX6H
580	20A0111500	FLANGE BOLT	1	M6X1.0X13DX16L
620	22G5710101	COVER STAY(A/C)	1	
850	22G0810400	RUBBER PIPE	1	10DX15DX170

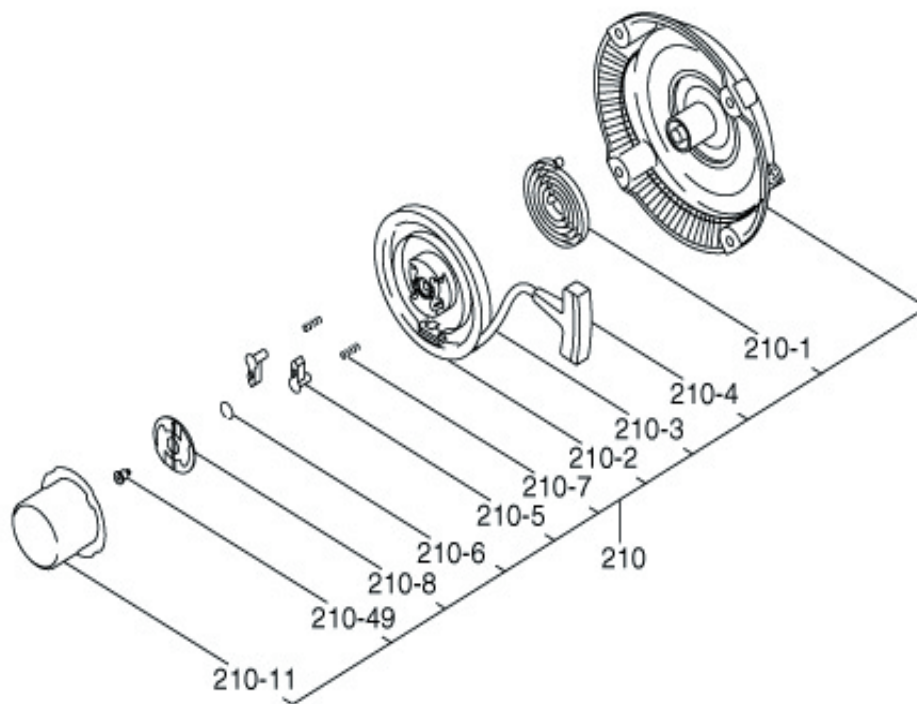


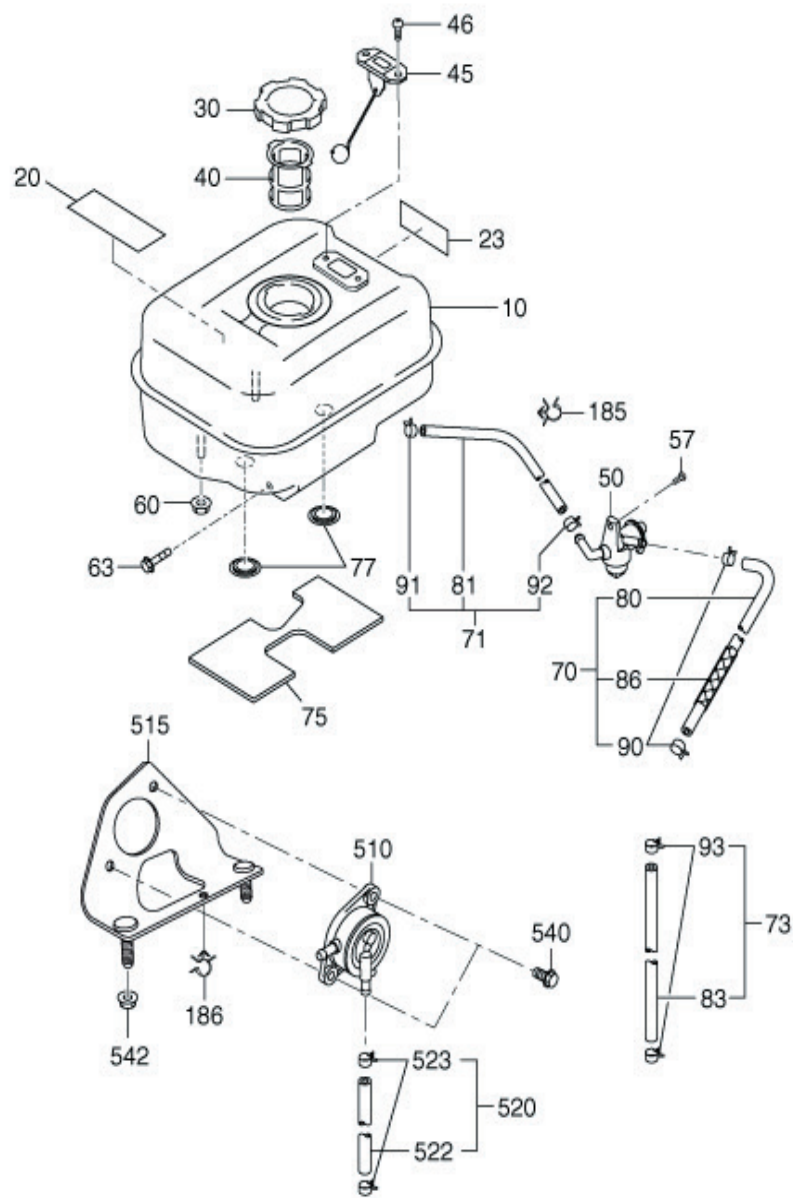
URETHANE




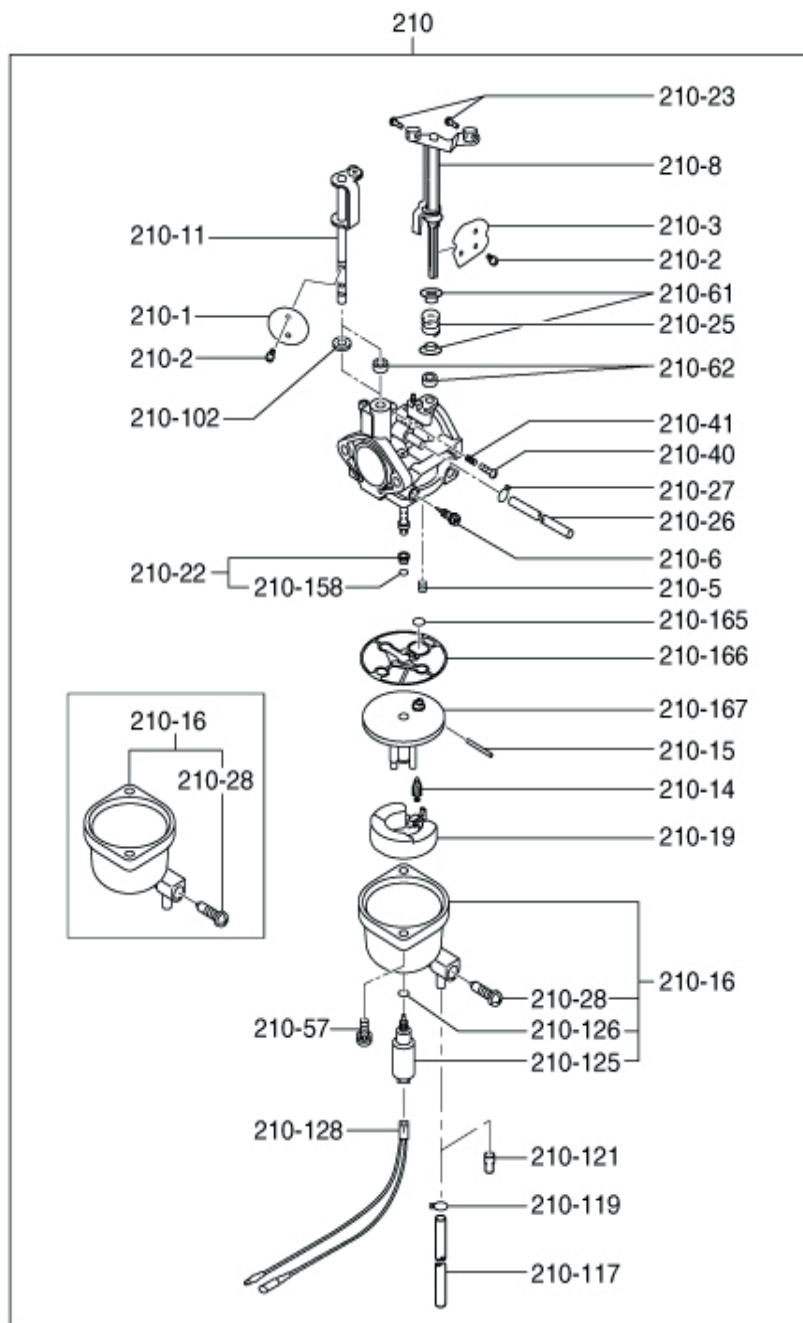


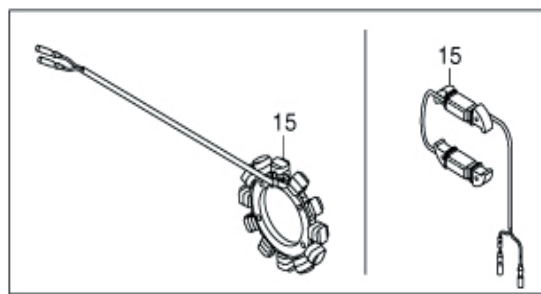
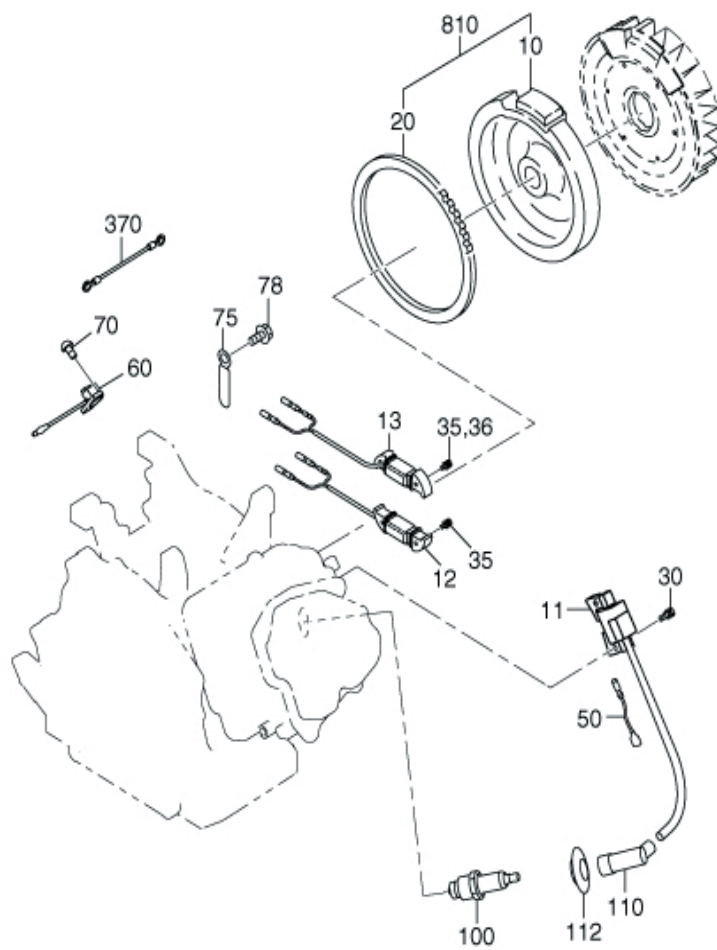


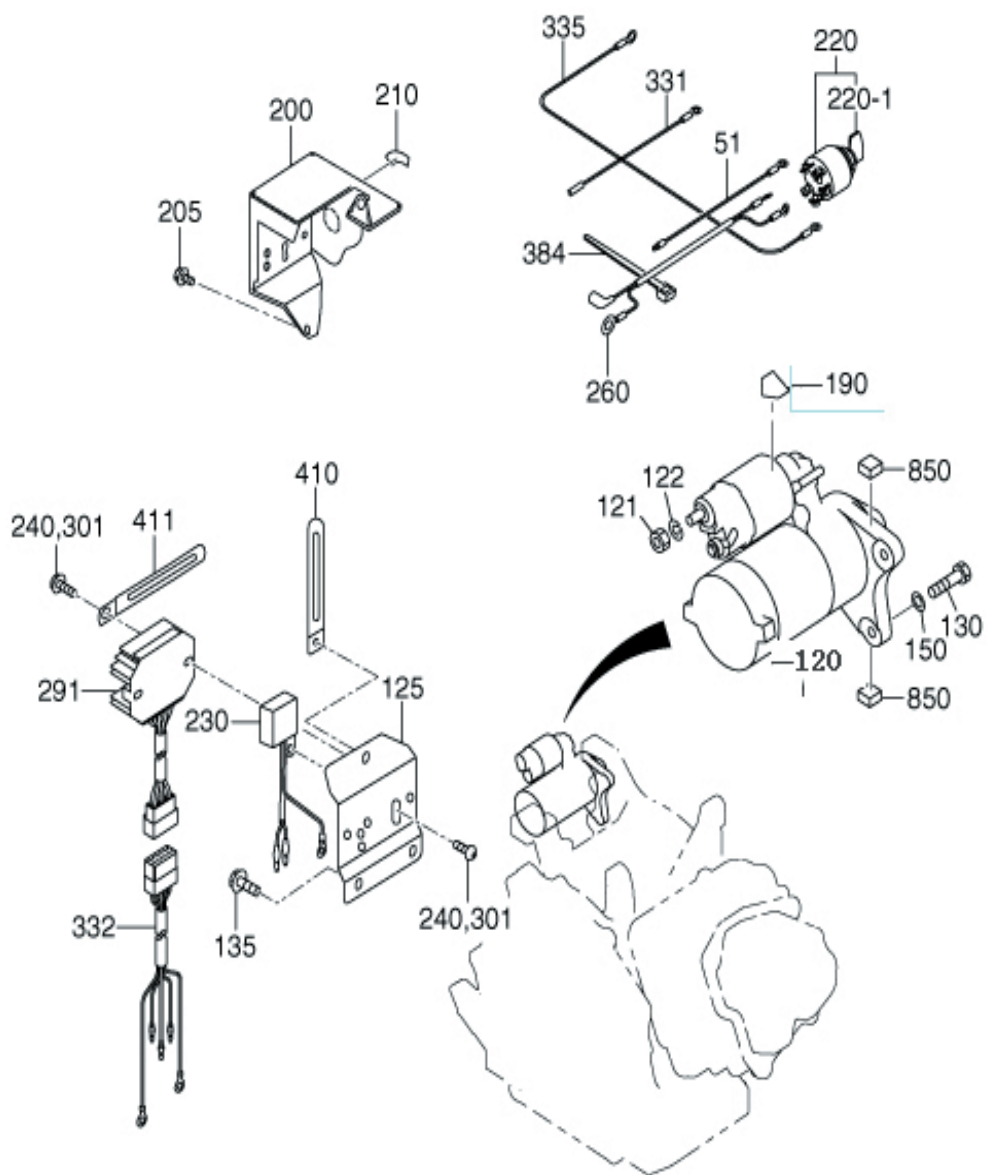


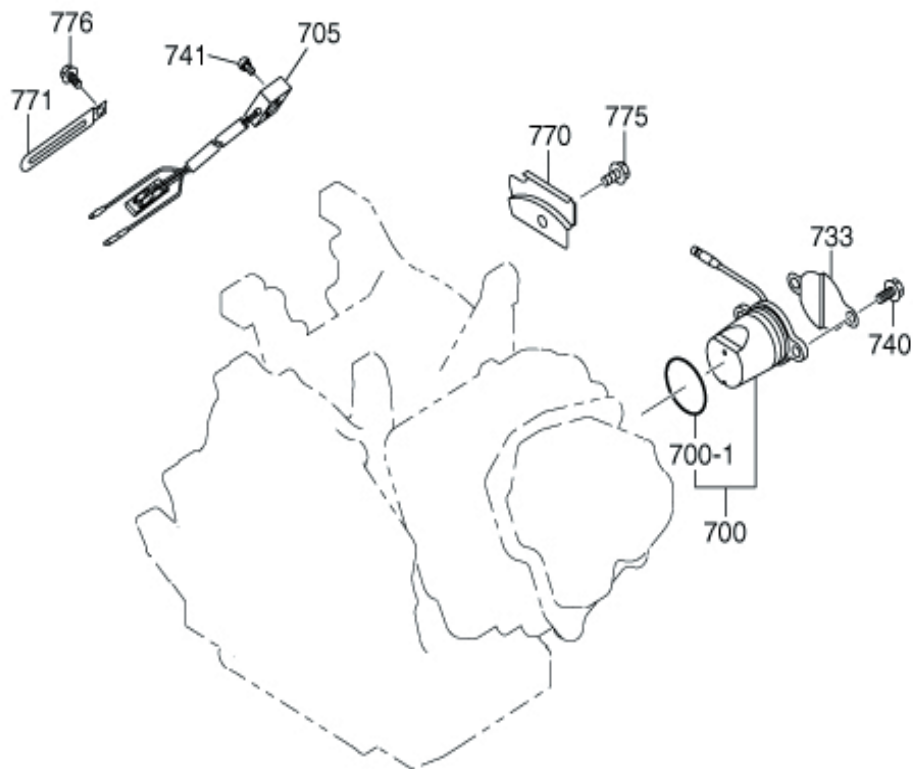


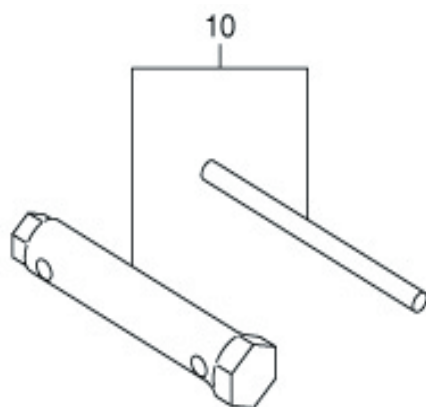
REF.	PART NUMBER	PART NAME	QTY.	REMARKS
10	22G6030211	FUEL TANK CP	1	LOW NOISE
20	X732005490	LABEL(WARNING)	1	
23	22GH910313	LABEL(MODEL)	1	
30	22G0440100	FUEL TANK CAP CP	1	43DX63.8DX18H BLACK
40	20A0640100	FUEL FILTER	1	
50	Z642012201	FUEL STRAINER AY	1	
57	20A0111200	FLANGE BOLT	1	M6X1.0X14DX8L
60	20A0185120	FLANGE NUT	2	M8X1.25X17DX7.5H
63	20A0110500	FLANGE BOLT	2	M8X1.25X16DX25L
70	22G6260101	FUEL PIPE CP	1	
71	22G6260401	FUEL PIPE CP	1	6.35DX12.7DX250L
75	22G6951103	SPONGE	1	
77	22G6950103	GROMMET	2	EPDM
80	22G0810300	RUBBER PIPE	1	6DX11DX85L
81	22G0810200	RUBBER PIPE	1	6.35DX12.7DX250L
90	22G0580200	HOSE CLAMP	2	10DX8BX0.6T
91	AFG1120040	HOSE CLAMP	1	12DX8BX0.8T
92	20A0580100	HOSE CLAMP	1	11.7DX8X0.8T
185	22G0590100	CLAMP	1	
				











www.wormsentreprises.com



Siège social / Head Office

ZAC de Lamirault

39 rue de Lamirault, 77090 Collégien, FRANCE

TEL. +33 (0) 1 64 76 29 50

FAX +33 (0) 1 64 76 29 99

Services commercial et Pièces de rechange

Sales and Spare Parts Departments

TEL. +33 (0) 1 64 76 29 60

FAX +33 (0) 1 64 76 29 99