



**Robin Generator**

**Model      RG2800iS**

**For DEU**

**PARTS CATALOG**

**Spec. No. RAS28017010**  
**(E/G Spec. No. EX170D20350)**

**富士重工業株式会社**  
**FUJI HEAVY INDUSTRIES LTD.**

<b>ISSUE EMD-GP6020</b>	
<b>ISSUE DATE</b>	<b>2004.05</b>

# HOW TO USE THIS PARTS CATALOG

① 6 FUEL LUBRICANT									
REF.	PART NUMBER	PART NAME	QTY.	REMARKS	CODE NO. FROM-TO	INTERCHANGEABLE PART NUMBER	UNIT PRICE	FIG.	
10	281-60101-01	FUEL TANK CP	1	2. 8L NEW R YELLOW	-			600	②
⑤ 20	073-20044-50	LABEL (CAUTION)	1	38X70	-			600	
30	043-04300-15	FUEL TANK CAP CP	1	43DX68DX14H	5296-			600	
	043-04301-00	FUEL TANK CAP CP	1		-5295			600	
40	064-13600-10	FUEL FILTER	1	36DX46DX43H	-			600	
③ 50	064-20064-00	FUEL STRAINER AY	1		-			630	
- 1	064-20064-20	FILTER	1		-			630	
- 2	064-20064-10	PACKING	1		-			630	
④ - 3	064-20042-10	CUP, STRAINER	1		-			630	

- ① **SECTION NAME** .....Parts are broadly classified according to their functions. Refer to section indexes(contents)for respective section name.
- ② **FIG.No.** .....It indicates illustration number. FIG.No. with the same figure in the third of hundreds shows that it is in a group of the same section. FIG.No. illustrating the target part can be read in the right-end section of the list.
- ③④ **REF.No.** .....It is a number to compare the part illustrated with the part number in the list.Serch for REF.No. in the list in the corresponding REF.No. in the illustration to determine the part number.  
Section ④ shows a 'SUB-ASSEMBLY PART' of section ③ which is indicated by the number led by '-' such as '-1','-2'.
- ⑤ **PART NUMBER** .....It is the number assigned for sales unit.  
Use the PART No. when marking an order.
- ⑥ **PART NAME**.....It is designation of the part.
- ⑦ **Q'ty**.....Quantity of part being employed for each product.
- ⑧ **REMARKS** ..... This gives a distinctive feature and/or a supplementary comment for the type,the specification, and the part concerned.
- ⑨ **INTERCHANGEABLE...PART NUMBER** ⑤...It shows part number(s) interchangeable for the part given in the section
- ⑩ **CODE No.** .....It indicates history of progress in which improved parts have been introduced in the product.The CODE No. helps to identify PART No. being employed in the product concerned.
- |  |       |  |  |
|--|-------|--|--|
|  | —     |  | The part has been employed in the product irrespective of CODE No.                 |
|  | 5296— |  | The part is employed in the products with CODE No. of 5296 and after this number.  |
|  | —5295 |  | The part is employed in the products with CODE No. of 5295 and before this number. |

## Table of abbreviations / 略語一覽

ABBREVIATIONS/略語	DESCRIPTION	説明
A	AMPERE	アンペア
AC	AIR CLEANER	エアクリーナ
AY	ASSEMBLY	アッセンブリ
B	BREADTH	幅
BB	BALL BEARING	ボールベアリング
CD	CENTER DISTANCE	中心間距離
CP	COMPLETE	コンプリート
CY	CYLINDER	シリンダ
D	DIAMETER	内径、外径、中心径
EX	EXPORT	輸出
EX	EXHAUST	排気
FIG	FIGURE	フィギュア (図解)
FR	FRONT	前側
H	HEIGHT	高さ
HZ	HERTZ	ヘルツ
IN	INCH	インチ
IN	INTAKE	吸入
L	LITER	リットル
L	LENGTH	長さ
LH	LEFT HAND	左側
MG	MAGNETIC	マグネチック
N	NUMBER	数、巻数
N R Y	NEW ROBIN YELLOW	新ロビン色
OS	OIL SENSOR	オイルセンサ
O. S.	OVER SIZE	オーバーサイズ
P	PITCH	ピッチ
PD	PITCH DIAMETER	中心径
PTO	POWER TAKE OFF	動力取出し
REF	REFERENCE	レファレンス (照合)
RH	RIGHT HAND	右側
RR	REAR	後側
ST	STARTER MOTOR	スターターモータ
STD	STANDARD	標準
SW	SPRING WASHER	スプリングワッシャ
SW	SWITCH	スイッチ
T	THICKNESS	厚さ
TH	THROTTLE	スロットル
UN	UNIT	ユニット
U. S.	UNDER SIZE	アンダーサイズ
V	VOLTAGE	ボルト
W	WASHER	ワッシャ
W	WATT	ワット
W	WIDTH	幅
W/	WITH	付き
W/O	WITHOUT	無し

# CONTENTS

## ENGINE PARTS

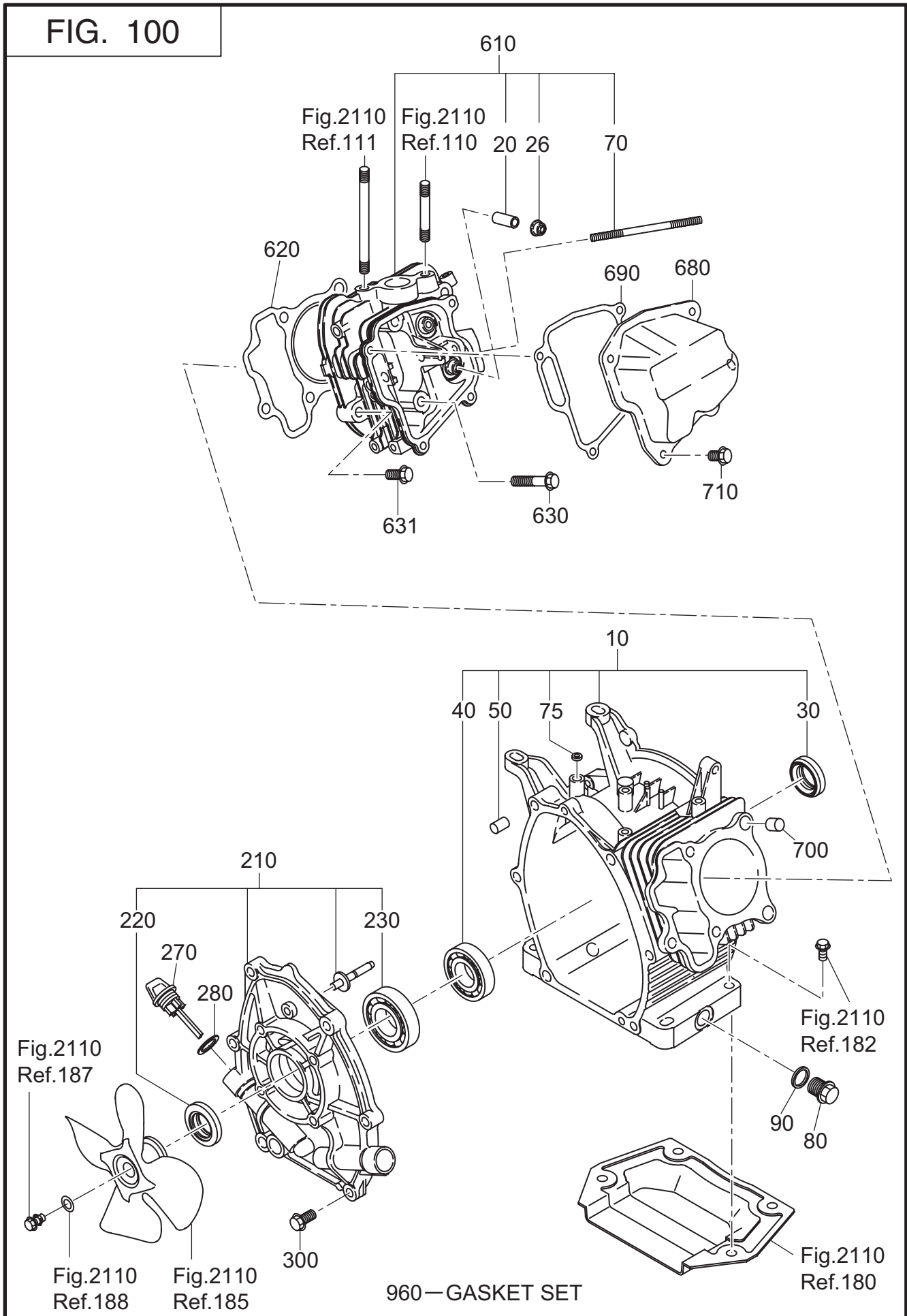
		FIG.	PAGE
1	CRANK CASE	100	1
2	CRANKSHAFT, PISTON	200	3
3	INTAKE, EXHAUST	300	5
4	GOVERNER, OPERATION	400	7
5	COOLING, STARTING	500	9
7	ELECTRIC DEVICE	700	11

## GENERATOR PARTS

21	ENGINE	2110·2130·2150·2160·2170	13
	(INC. MUFFLER, AIR CLEANER, RECOIL STARTER, CARBURETOR, ELECTRIC DEVICE)		
22	GENERATOR	2200	20
23	BASE, FRAME	2300	22
24	CONTROL	2400	24
25	COVER	2500·2510	27
26	FUEL TANK	2600	31
29	ACCESSORIES	2900	33

<b>PARTS NUMBER INDEX LIST</b>	<b>35</b>
--------------------------------	-----------

FIG. 100



# 1 CRANK CASE

REF.	PARTS NUMBER	PARTS NAME	QTY	REMARKS	CODE NO. FROM-TO	INTERCHANGEABLE PART NUMBER	UNIT PRICE	FIG.
10	277-10102-41	CRANK CASE CP	1		-			100
20	237-14202-03	VALVE GUIDE	2	O. S.	-			100
26	277-16010-01	STEM SEAL	1		-			100
30	044-02502-00	OIL SEAL	1		-			100
40	060-02800-21	BALL BEARING	1		-			100
50	277-15011-03	PIPE KNOCK	2		-			100
70	010-50603-51	STUD	2	6DX98L	-			100
75	044-00600-20	OIL SEAL	1		-			100
80	040-11400-30	PLUG	2		-			100
90	021-11400-20	GASKET	2		-			100
210	277-11001-31	MAIN BEARING COVER C	1		-			100
220	044-02502-10	OIL SEAL	1		-			100
230	060-02501-40	BALL BEARING	1		-			100
270	277-63601-13	OIL GAUGE	2		-			100
280	021-31600-20	GASKET	2		-			100
300	001-04083-50	FLANGE BOLT	6		-			100
610	277-13005-01	CYLINDER HEAD CP	1		-			100
620	277-15001-23	GASKET (HEAD)	1		-			100
630	011-00802-40	FLANGE BOLT	4	M8X68L	-			100
631	011-00803-10	FLANGE BOLT	1	M8X33L	-			100
680	277-15501-01	ROCKER COVER CP	1		-			100
690	277-16001-13	GASKET (ROCKER COVER)	1		-			100
700	277-15011-03	PIPE KNOCK	2		-			100
710	011-00600-20	FLANGE BOLT	4	M6X12L	-			100
960	277-99001-27	GASKET SET	1		-			100

FIG. 200

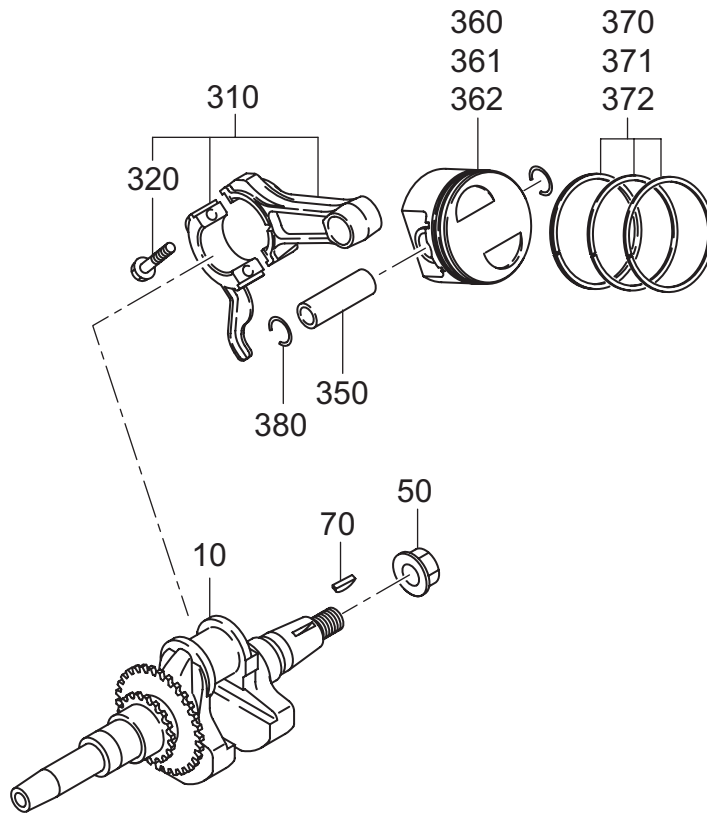






FIG. 300

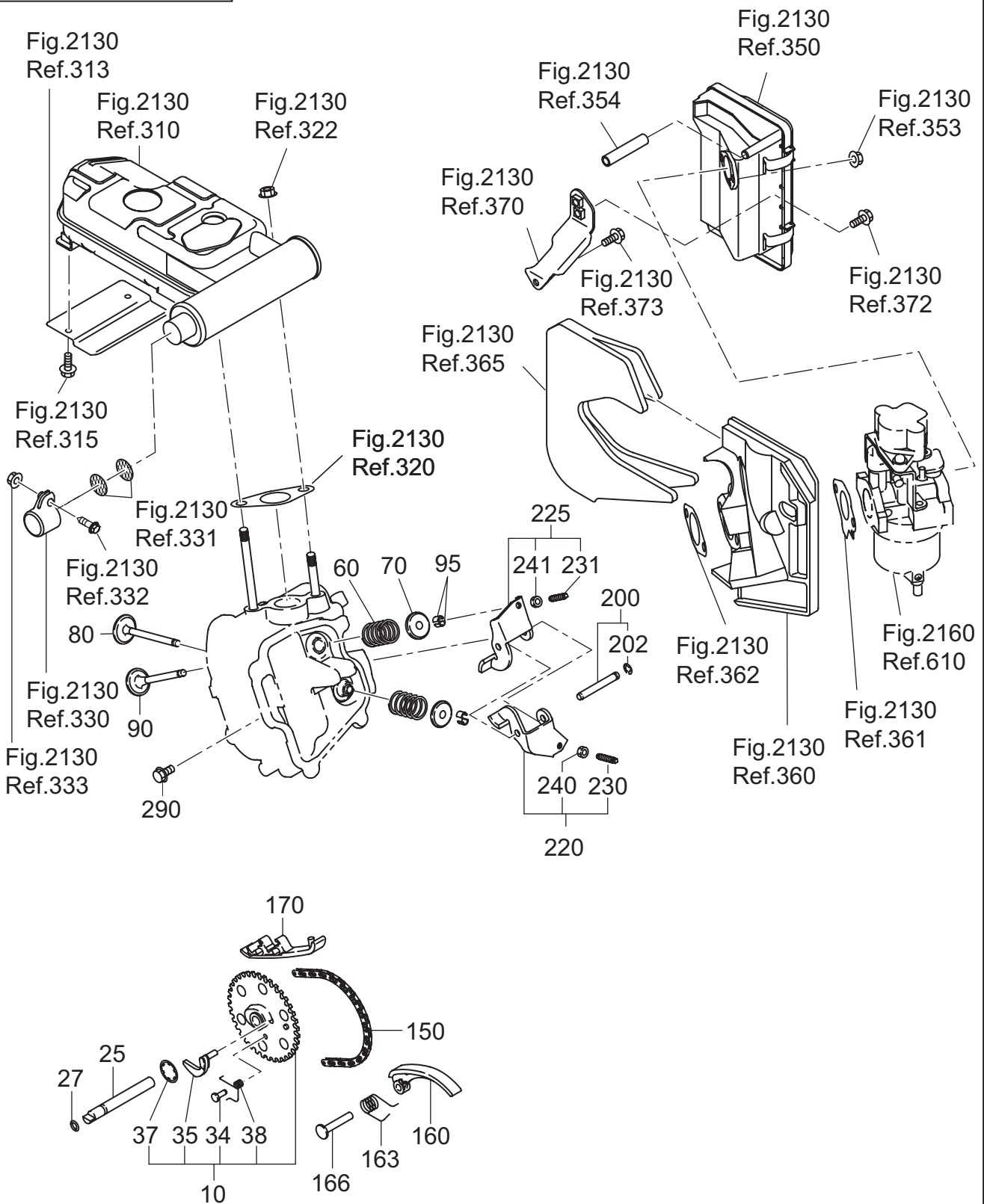




FIG. 400

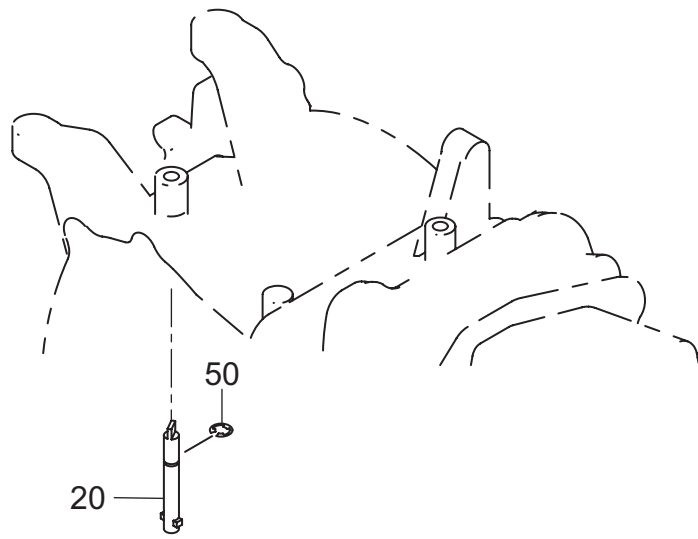




FIG. 500

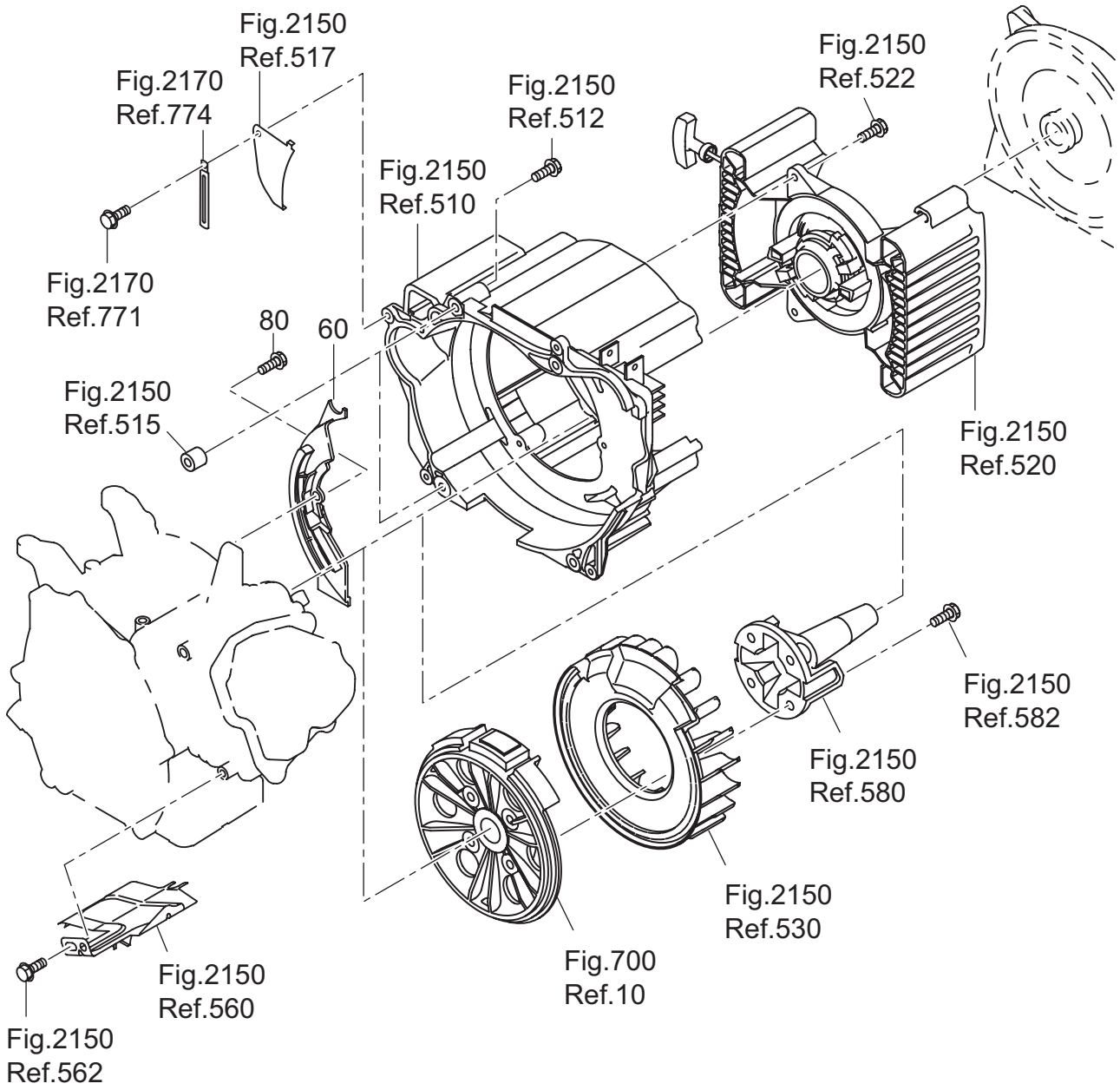




FIG. 700

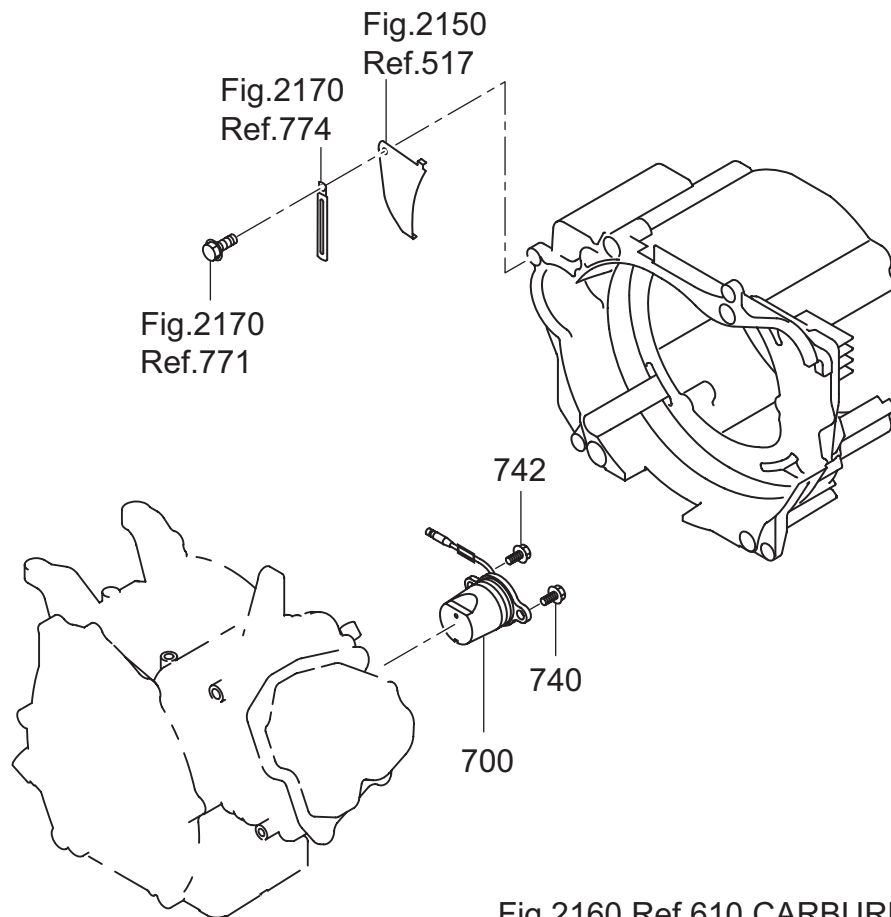
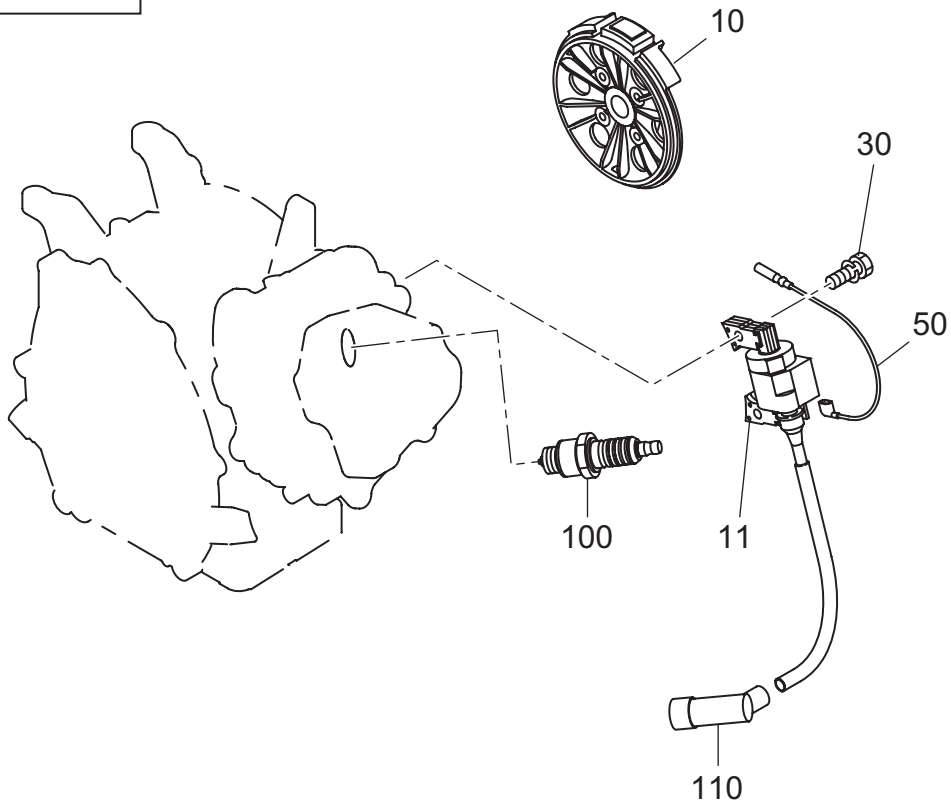


Fig.2160 Ref.610 CARBURETOR AY





FIG. 2110

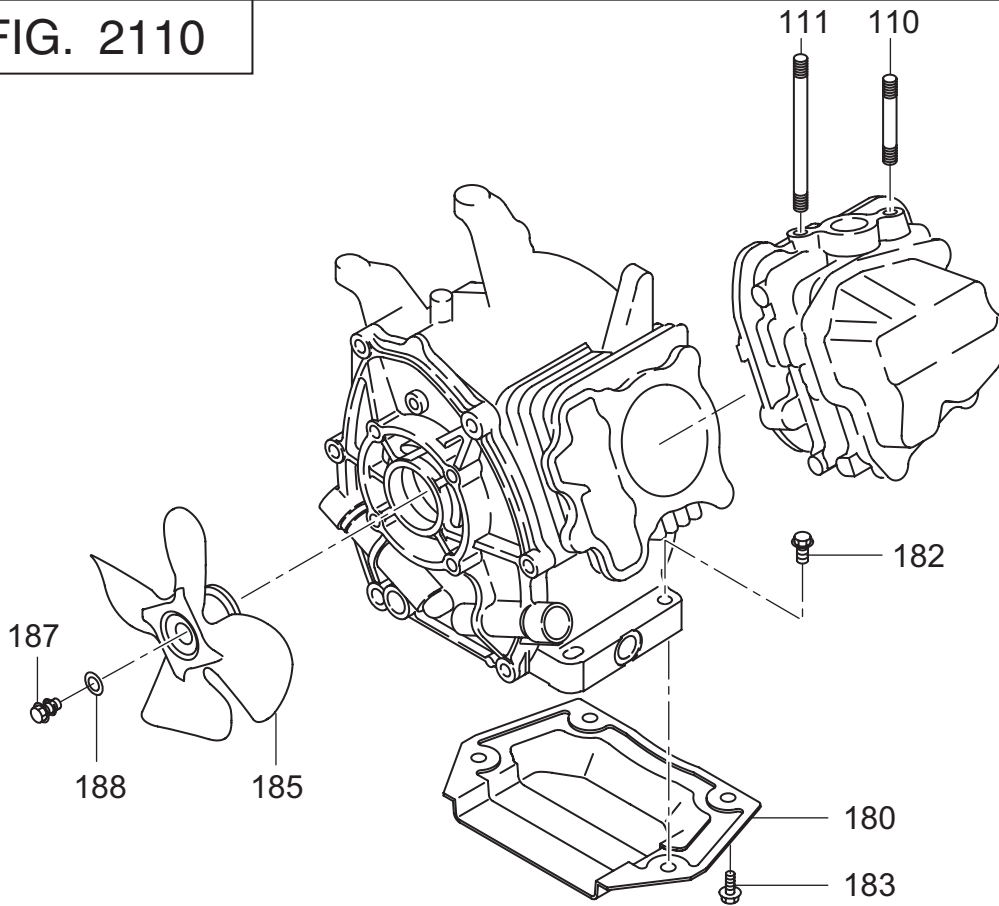


FIG. 2130

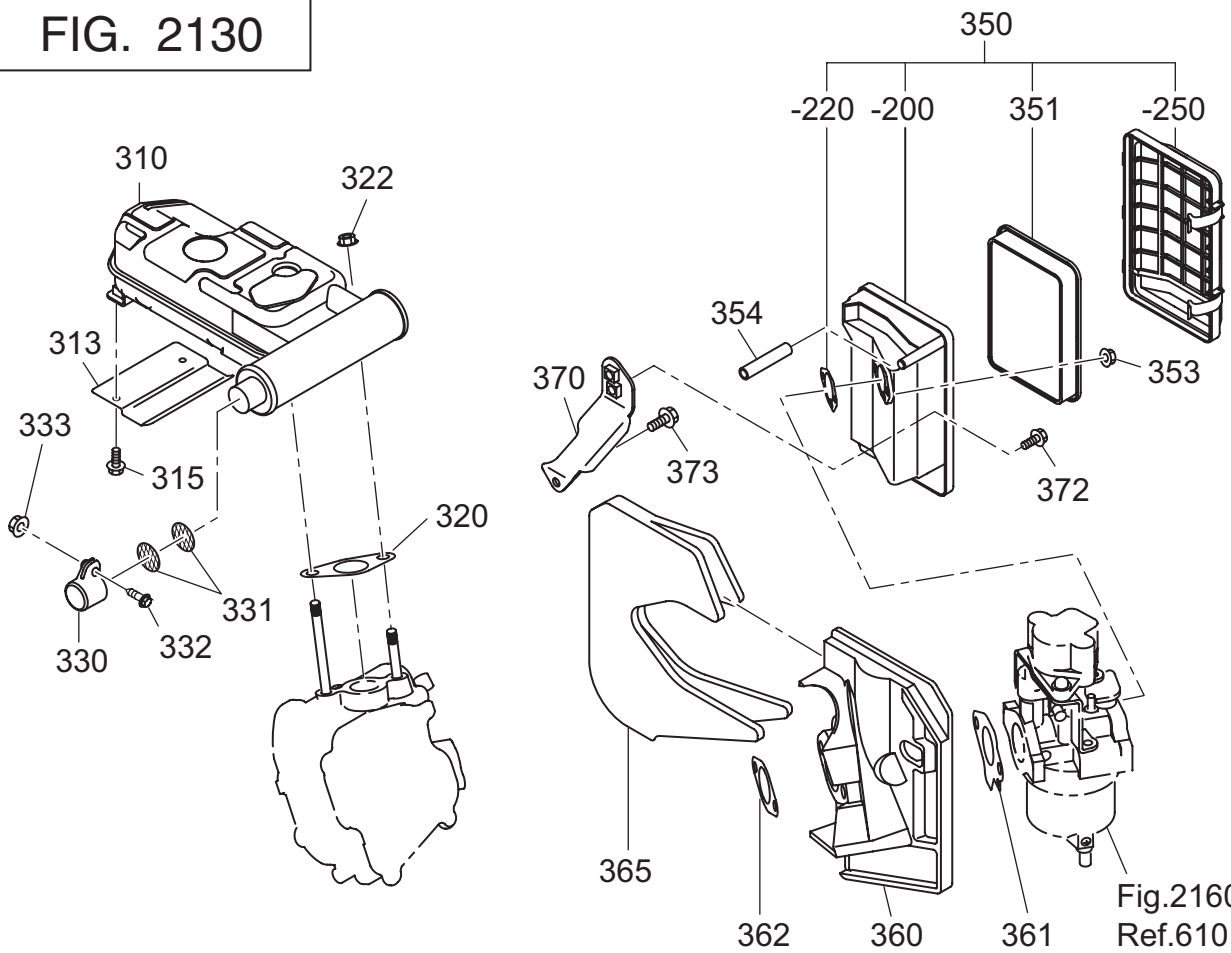


FIG. 2150

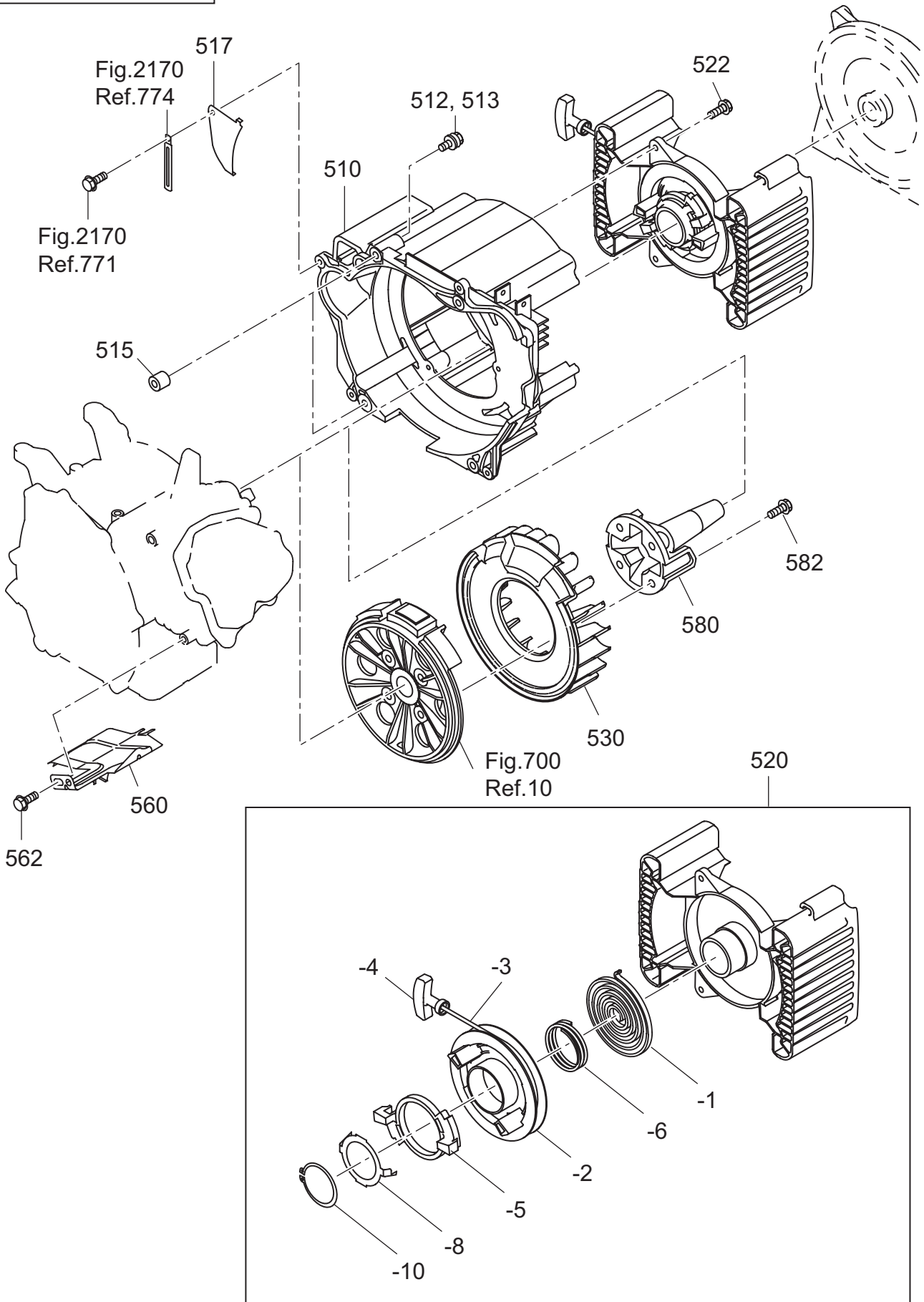
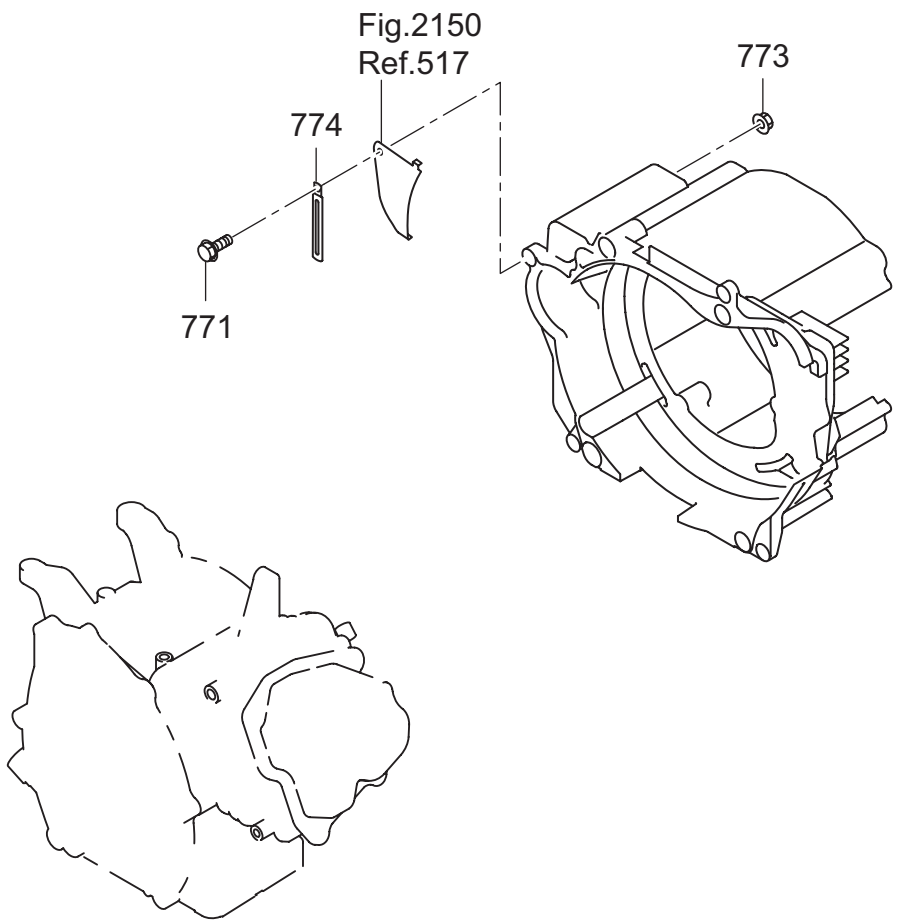




FIG. 2170



2 1 ENGINE

REF.	PARTS NUMBER	PARTS NAME	QTY	REMARKS	CODE NO. FROM-TO	INTERCHANGEABLE PART NUMBER	UNIT PRICE	FIG.
110	010-50802-90	STUD	1		-			2110
111	010-50805-10	STUD	1	M8X112L	-			2110
180	33B-35001-01	BOTTOM EXT. PLATE CP	1		-			2110
182	011-00802-70	FLANGE BOLT	2	M8X33L	-			2110
183	011-00801-50	FLANGE BOLT	2	M8X12L	-			2110
185	34G-54101-01	FAN (SILENT) CP	1		-			2110
187	001-14082-50	BOLT AND WASHER AY	1		-			2110
188	020-00800-80	WASHER	1		-			2110
310	277-30411-31	MUFFLER CP (SILENT)	1		-			2130
313	33B-52601-03	BAFFLE	1		-			2130
315	011-00601-60	FLANGE BOLT	2	M6X23L	-			2130
320	277-35201-13	GASKET (MUFFLER)	1		-			2130
322	980-20082-80	FLANGE NUT	2	M8	-			2130
330	277-37210-03	TAIL SCREEN COVER	1		-			2130
331	277-37220-03	SCREEN	2		-			2130
332	004-35051-60	SCREW AND WASHER AY	1		-			2130
333	002-18050-00	NUT	1		-			2130
350	277-32622-20	AIR CLEANER AY	1		-			2130
-200	277-32632-08	BASE CP	1		-			2130
-220	277-32604-08	PACKING	1		-			2130
-250	277-32643-18	COVER CP	1		-			2130
351	277-32661-17	ELEMENT SET	1		-			2130
353	002-38060-00	FLANGE NUT	2		-			2130
354	085-10800-00	RUBBER PIPE	1	8DX11D	-			2130
360	277-32910-03	INSULATOR	1		-			2130
361	277-35902-H3	GASKET 1 (INSULATOR)	1		-			2130
362	277-35903-H3	GASKET 2 (INSULATOR)	1		-			2130
365	277-39701-03	SPONGE (INSULATOR)	1		-			2130
370	277-39004-01	BRACKET (A/C) 1 CP	1		-			2130
372	011-00600-50	FLANGE BOLT	1	M6X20L	-			2130
373	011-00600-20	FLANGE BOLT	1	M6X12L	-			2130
510	277-52001-13	BLOWER HOUSING	1		-			2150
512	001-14063-50	BOLT AND WASHER AY	1		-			2150
513	001-14064-50	BOLT AND WASHER AY	3		-			2150
515	980-40081-10	STR PIN -8X10	2	M6	-			2150
517	277-56001-03	PLATE 3	1		-			2150

2 1 ENGINE

REF.	PARTS NUMBER	PARTS NAME	QTY	REMARKS	CODE NO. FROM-TO	INTERCHANGEABLE PART NUMBER	UNIT PRICE	FIG.
520	277-50401-00	RECOIL STARTER AY	1		-			2150
-1	277-50402-08	SPIRAL SPRING	1		-			2150
-2	277-50403-08	REEL	1		-			2150
-3	277-50408-08	STARTER PORE	1		-			2150
-4	277-50409-08	STARTER KNOB	1		-			2150
-5	277-50404-08	RACHET	1		-			2150
-6	277-50405-08	FRICITION SPRING	1		-			2150
-8	277-50407-08	FRICITION PLATE	1		-			2150
-10	277-50406-08	RETAINING RING	1		-			2150
522	011-00601-40	FLANGE BOLT	3	M6X18L	-			2150
530	277-54101-13	COOLING BLOWER	1		-			2150
560	277-52702-03	BAFFLE 2 (HEAD)	1		-			2150
562	011-00600-20	FLANGE BOLT	1	M6X12L	-			2150
580	277-24401-03	DRIVING SHAFT	1		-			2150
582	011-01001-10	FLANGE BOLT	4	M8X27L	-			2150
610	277-62330-00	CARBURETOR AY	1		-			2160
-1	277-62536-08	THROTTLE VALVE	1		-			2160
-2	284-62455-08	SCREW	2		-			2160
-3	284-62525-08	CHOKE VALVE	1		-			2160
-4	284-62455-08	SCREW	1		-			2160
-5	277-62422-08	SLOW JET	1		-			2160
-8	284-62520-08	CHOKE LEVER	1		-			2160
-11	277-62532-08	THROTTLE SHAFT	1		-			2160
-12	284-62355-08	BOLT	1		-			2160
-14	279-62500-08	NEEDLE	1		-			2160
-15	284-62515-08	PIN	1		-			2160
-16	284-62550-08	FLOAT BODY	1		-			2160
-17	251-62350-08	PACKING	1		-			2160
-18	284-62540-08	CHAMBER PACKING	1		-			2160
-19	284-62505-08	FLOAT AY	1		-			2160
-22	277-62409-08	MAIN JET	1		-			2160
-23	284-62456-08	SCREW	1		-			2160
-25	284-62445-08	SPRING (CHOKE)	1		-			2160
-28	251-62466-08	DRAIN SCREW	1		-			2160
-32	251-62559-08	SEAL	1		-			2160
-40	277-62581-08	ADJUST SCREW	1		-			2160



FIG. 2200

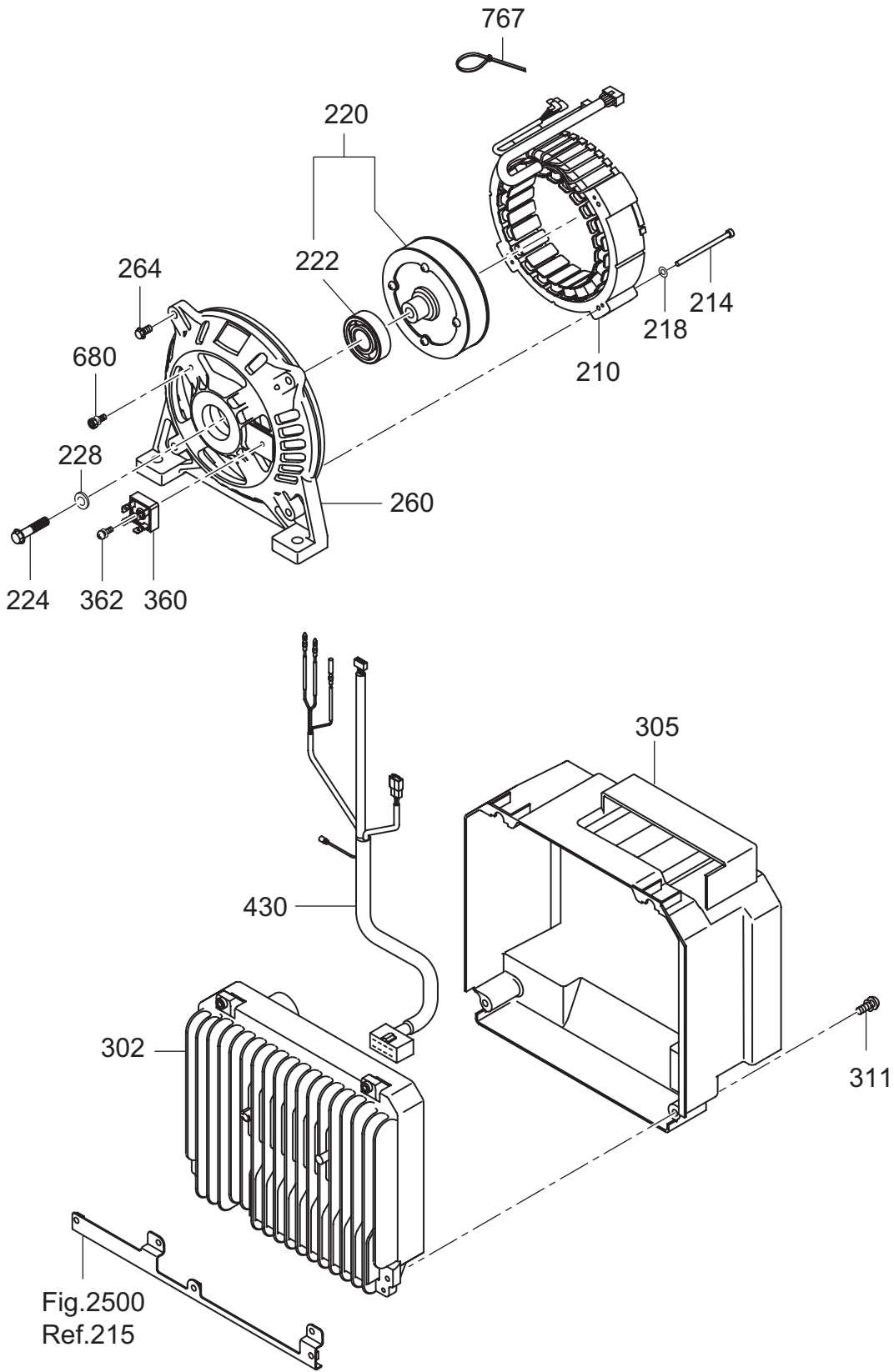






FIG. 2300

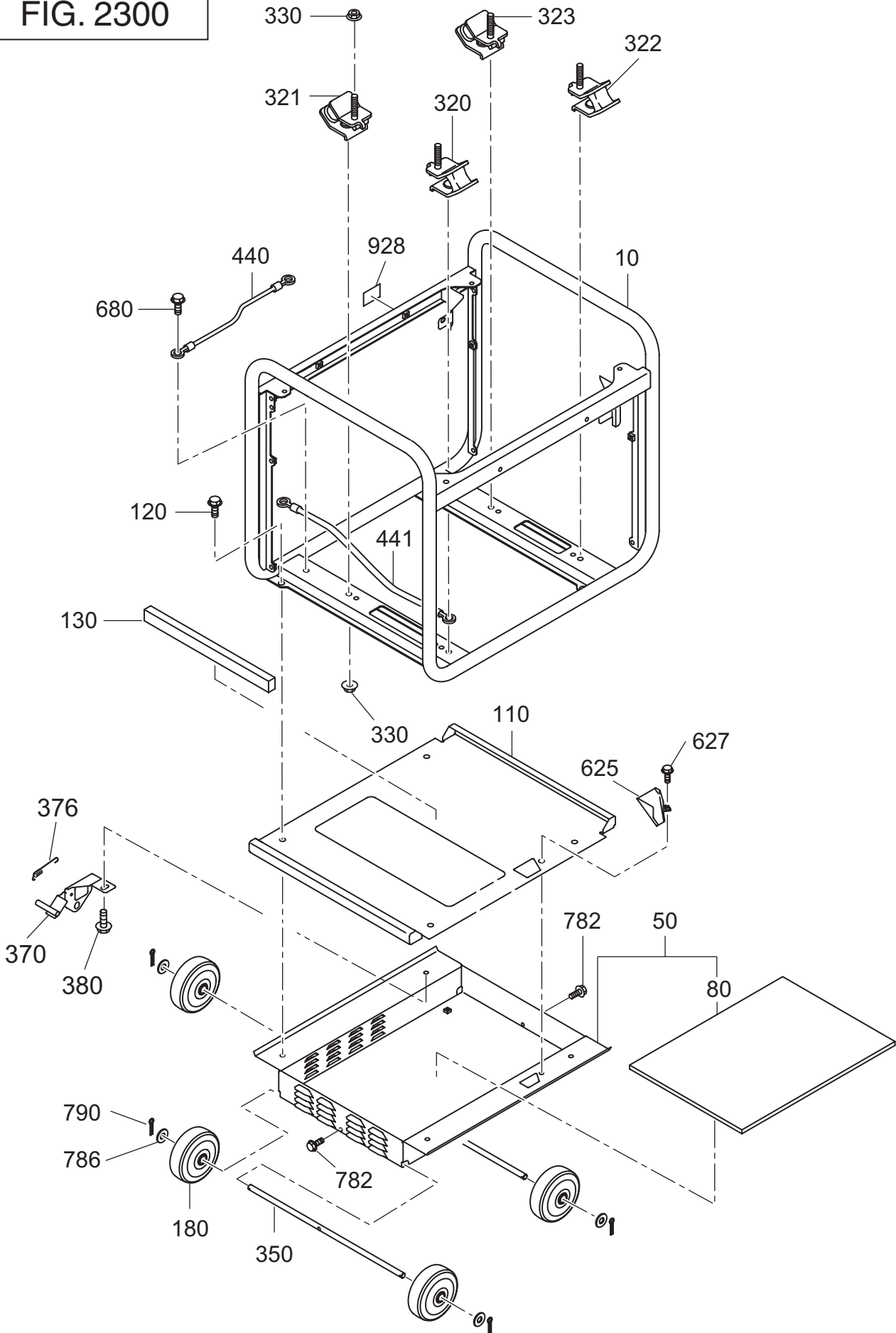
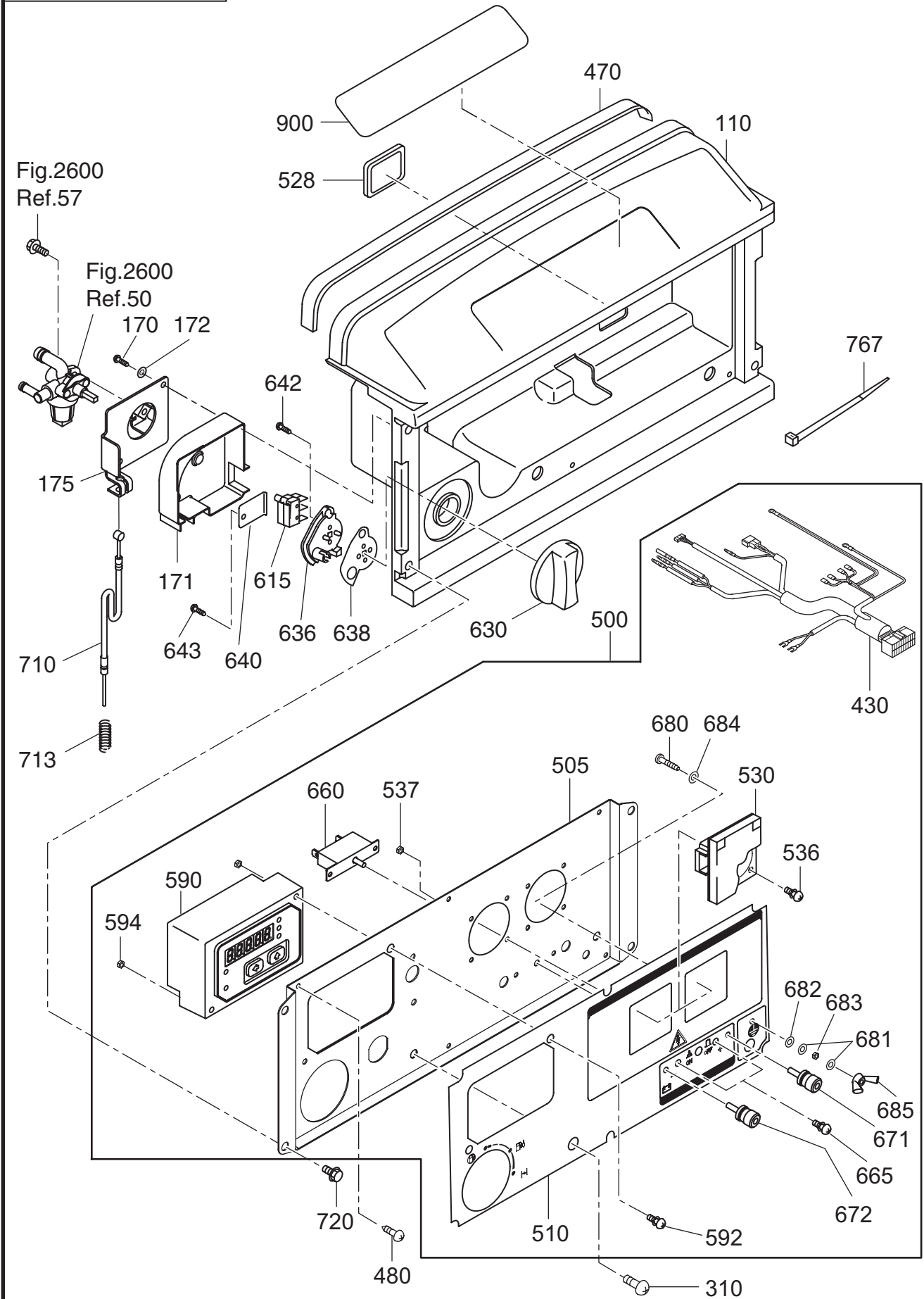




FIG. 2400

50Hz 230V DEU



2 4 CONTROL

REF.	PARTS NUMBER	PARTS NAME	QTY	REMARKS	CODE NO. FROM-TO	INTERCHANGEABLE PART NUMBER	UNIT PRICE	FIG.
110	33B-50001-01	FRONT COVER (UPPER) CP	1		-			2400
170	015-00400-70	TAPPING SCREW	2		-			2400
171	33B-46001-03	COVER (COCK)	1		-			2400
172	003-10040-00	WASHER	2		-			2400
175	33B-46012-01	BRACKET (COCK)	1		-			2400
310	004-36061-60	SCREW AND WASHER AY	2		-			2400
430	34B-48012-01	WIRE HARNESS CP	1		-			2400
470	34B-57311-03	SEAL SPONGE FC2	1		-			2400
480	353-49904-08	TAPPING SCREW	6	M4X10L	-			2400
500	34B-41718-10	CONTROL PANEL AY	1		-			2400
505	33B-45009-01	PANEL PLATE CP	1		-			2400
510	34B-49022-03	SHEET (PANEL VR) 22	1		-			2400
528	227-75001-03	GROMMET	1		-			2400
530	358-40621-08	AC CONCENT (FINLAND)	2		-			2400
536	004-36031-20	SCREW AND WASHER AY	8		-			2400
537	002-17030-00	NUT	8		-			2400
590	KU3-11770-11	MONITOR C/U CP (INV2)	1		-			2400
592	013-10400-80	SCREW AND WASHER AY	2	M4X40L	-			2400
594	002-17040-00	NUT	2		-			2400
615	33K-41811-03	MICRO SWITCH	2		-			2400
630	33K-42010-03	CONTROL DIAL	1		-			2400
636	33K-42020-03	CHOKE REEL	1		-			2400
638	33K-42030-13	PLATE	1		-			2400
640	33B-46015-01	BRACKET (MICRO)	1		-			2400
642	33K-41814-08	TAPPING SCREW	2		-			2400
643	015-00400-70	TAPPING SCREW	1	M3X16L	-			2400
660	352-45620-08	CIRCUIT BREAKER	1	201-10A	-			2400
665	31B-79011-03	SCREW	2		-			2400
671	363-45701-08	TERMINAL BOLT	1	RED	-			2400
672	363-45700-08	TERMINAL BOLT	1	BLACK	-			2400
680	388-88001-03	SCREW AND WASHER AY	1		-			2400
681	332-00050-08	SPRING WASHER	2		-			2400
682	353-49903-08	WASHER	1		-			2400
683	353-49902-08	NUT	1		-			2400
684	003-30050-00	LOCK WASHER	1		-			2400
685	353-49901-08	WING NUT	1		-			2400



FIG. 2500

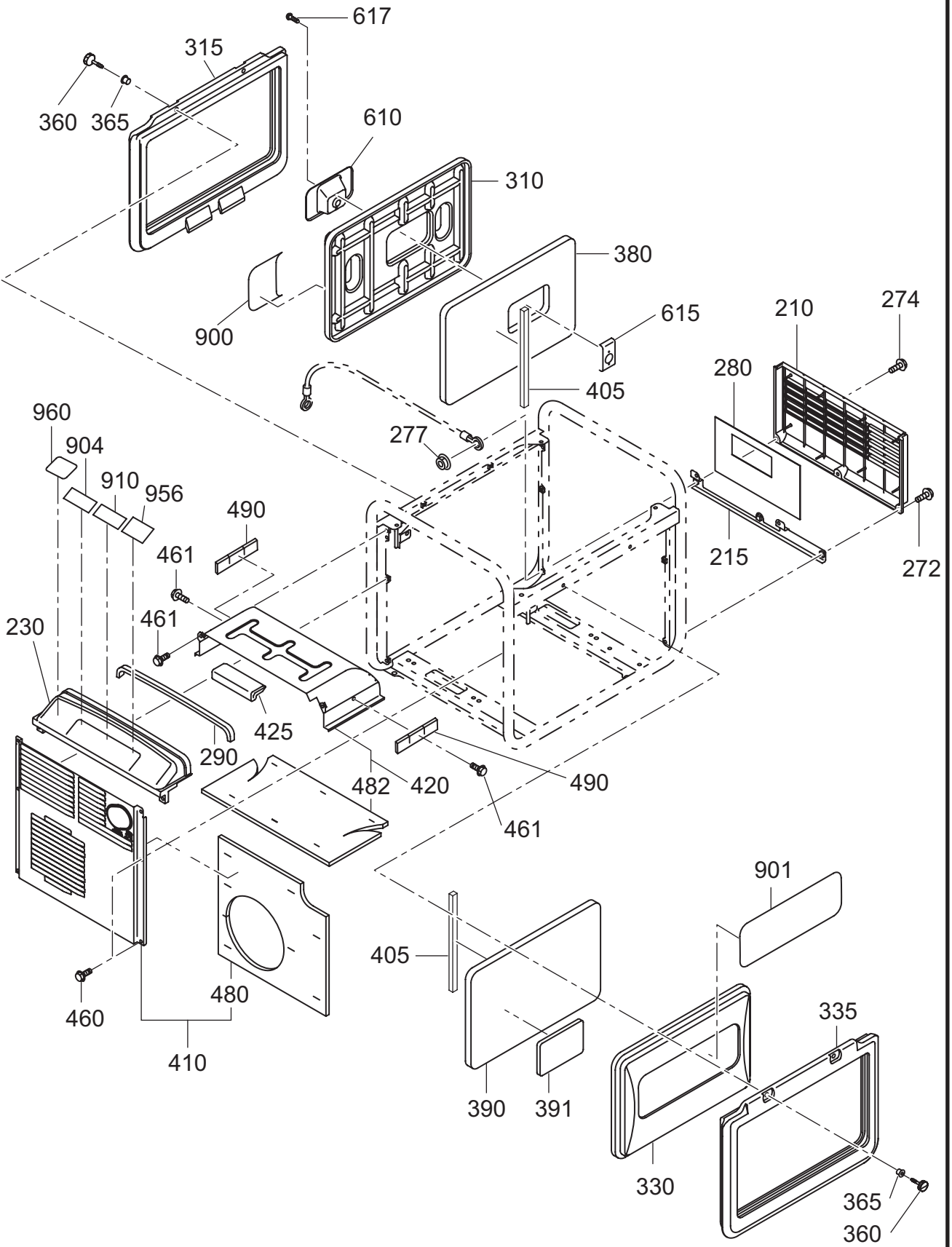
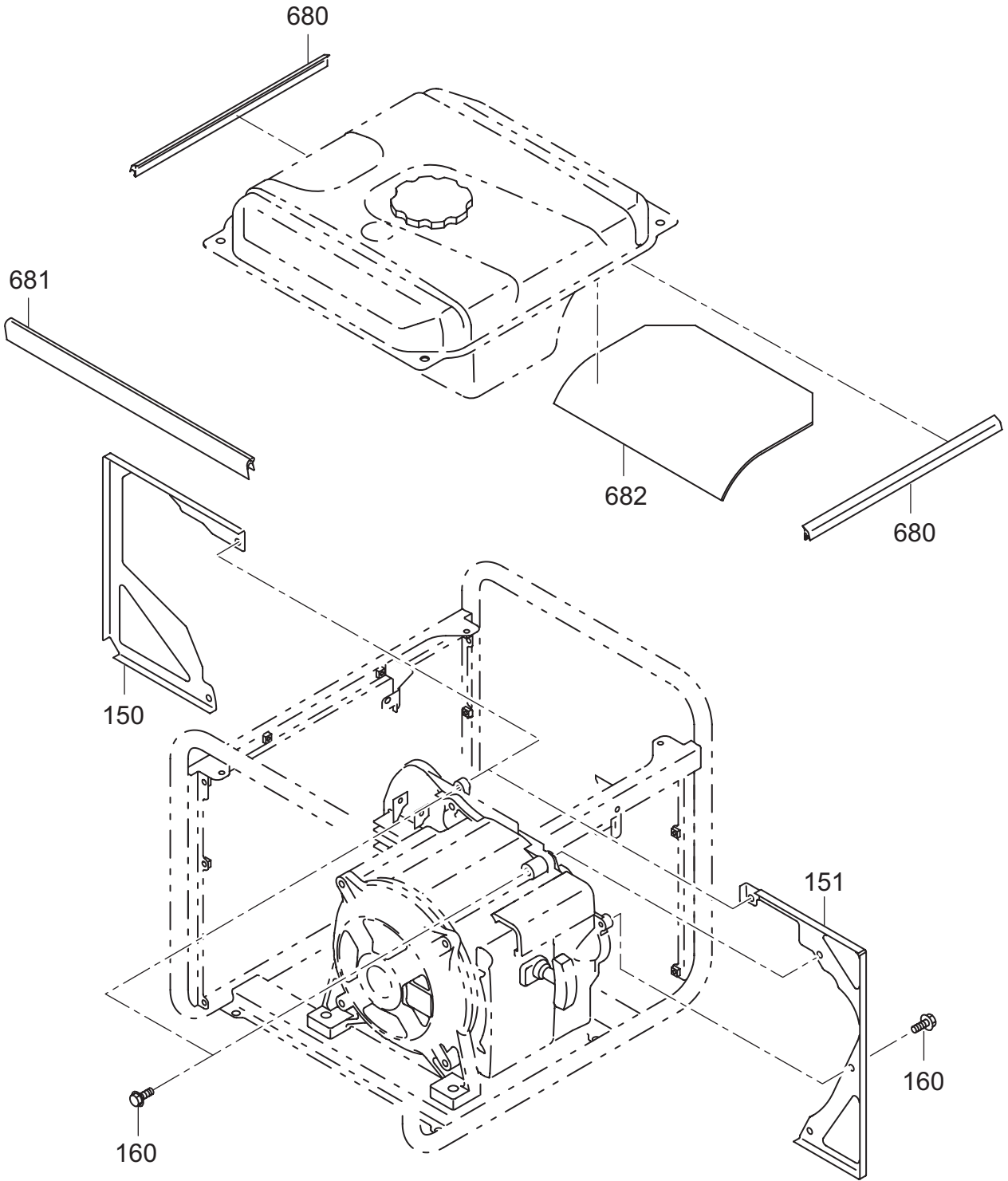


FIG. 2510





2 5 COVER

REF.	PARTS NUMBER	PARTS NAME	QTY	REMARKS	CODE NO. FROM-TO	INTERCHANGEABLE PART NUMBER	UNIT PRICE	FIG.
210	33B-50101-01	FRONT COVER (LOWER) CP	1		-			2500
215	33B-35501-01	BRACKET (COVER) CP	1		-			2500
230	33B-50501-01	REAR COVER (UPPER) CP	1		-			2500
272	011-00601-80	FLANGE BOLT	2	M6X18L	-			2500
274	001-11062-50	BOLT AND WASHER AY	1		-			2500
277	002-38060-00	FLANGE NUT	1		-			2500
280	34B-57310-03	SEAL SPONGE FC1	1		-			2500
290	34B-57311-03	SEAL SPONGE FC2	1		-			2500
310	34G-51001-01	SIDE COVER (R) CP	1		-			2500
315	34G-55101-03	SIDE RUBBER SEAL	1		-			2500
330	34G-51101-01	SIDE COVER (L) CP	1		-			2500
335	34G-55101-03	SIDE RUBBER SEAL	1		-			2500
360	34G-55301-01	COVER BOLT CP	4		-			2500
365	34G-55302-01	SPACER CP	4		-			2500
380	34G-59001-13	SPONGE (S COVER-R)	1		-			2500
390	34G-59002-13	SPONGE (S COVER-L)	1		-			2500
391	34G-59008-03	SPONGE (S COVER-L)	1		-			2500
405	34G-57321-03	SEAL SPONGE (SIDE)	2		-			2500
410	33B-56411-01	MUF COVER (REAR) CP	1		-			2500
420	34G-56351-01	MUF COVER (L) CP	1		-			2500
425	33B-57005-03	SEAL RUBBER	1		-			2500
460	011-00601-80	FLANGE BOLT	6	M6X18L	-			2500
461	011-00600-80	FLANGE BOLT	4	M6X12L	-			2500
480	33B-57105-03	GLASS WOOL (M-COVER)	1		-			2500
482	33B-57103-03	GLASS WOOL	1		-			2500
490	34G-57322-03	SEAL SPONGE (MF17.21)	2		-			2500
610	34G-55001-01	COVER (RECOIL KNOB) CP	1		-			2500
615	34G-55002-01	PLATE CP	1		-			2500
617	004-35061-00	SCREW AND WASHER AY	2		-			2500
900	34G-91001-03	LABEL (TRADE MARK-R)	1		-			2500
901	34G-92001-03	LABEL (TRADE MARK-L)	1		-			2500
904	34G-96006-23	LABEL (SPEC)	1		-			2500
910	33K-94002-03	LABEL (CAUTION)	1		-			2500
956	073-20045-00	LABEL (HOT&GAS)	1		-			2500
960	073-20053-80	LABEL (90DB)	1		-			2500
150	33B-56101-11	SEPARATOR (A/C)	1		-			2510



FIG. 2600

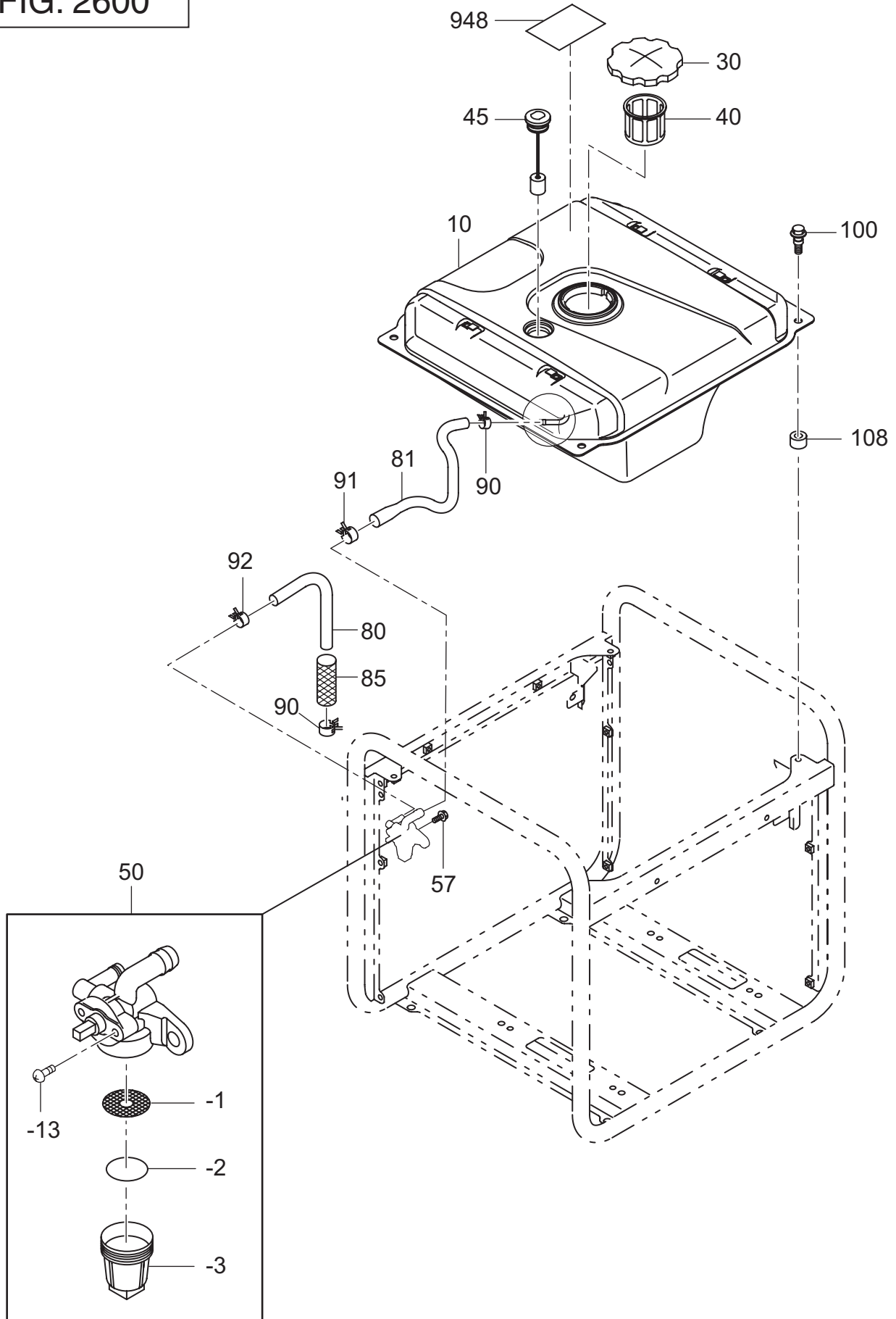
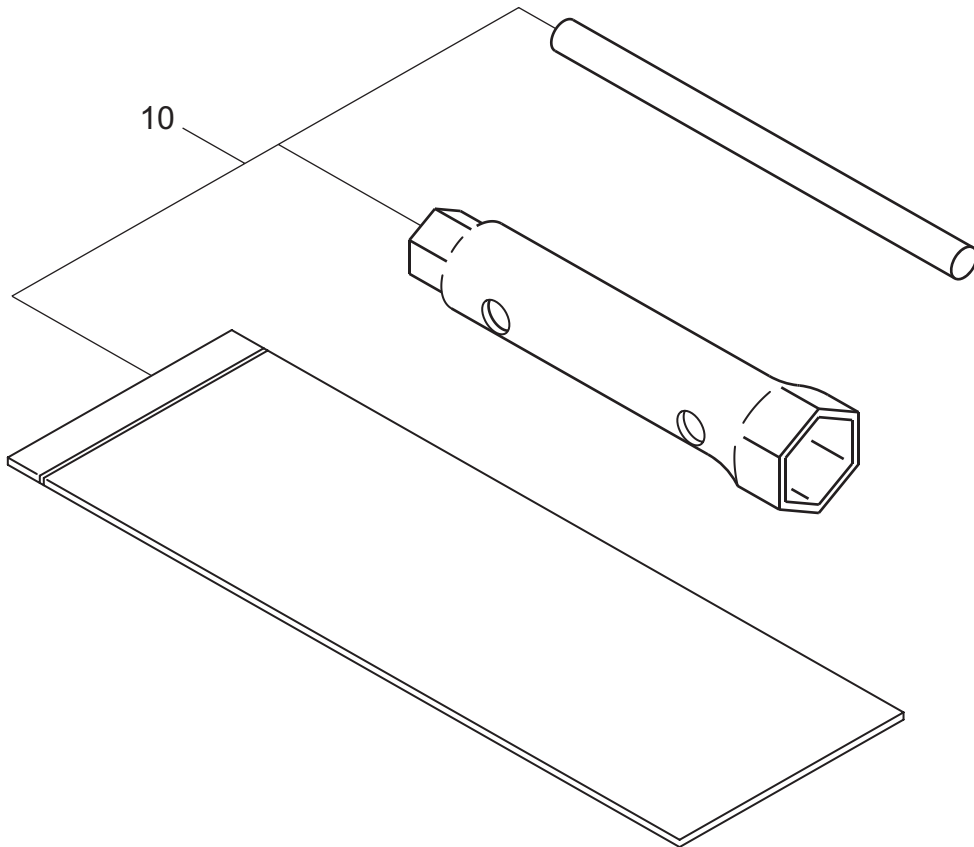




FIG. 2900





PART NUMBER INDEX LIST

PARTS NUMBER	PARTS NAME	FIG.	REF.	PARTS NUMBER	PARTS NAME	FIG.	REF.
001-04061-60	FLANGE BOLT	500	80	013-10400-80	SCREW AND WASHER AY	2400	592
001-04083-50	FLANGE BOLT	100	300	014-00601-21	SCREW	2300	680
001-11062-50	BOLT AND WASHER AY	2500	274	014-00601-90	SCREW	2400	720
001-14061-60	BOLT AND WASHER AY	700	740	014-90500-20	ADJUST SCREW	300	230
001-14062-50	BOLT AND WASHER AY	700	30	014-90500-20	ADJUST SCREW	300	231
001-14062-50	BOLT AND WASHER AY	2200	264	015-00400-70	TAPPING SCREW	2400	170
001-14063-50	BOLT AND WASHER AY	2150	512	015-00400-70	TAPPING SCREW	2400	643
001-14064-50	BOLT AND WASHER AY	2150	513	017-00500-30	NUT	300	240
001-14081-60	BOLT AND WASHER AY	2300	120	017-00500-30	NUT	300	241
001-14081-60	BOLT AND WASHER AY	2300	380	018-01400-20	FLANGE NUT	200	50
001-14082-50	BOLT AND WASHER AY	2110	187	020-00800-80	WASHER	2110	188
002-17030-00	NUT	2400	537	020-01001-60	WASHER	2200	228
002-17040-00	NUT	2400	594	021-11400-20	GASKET	100	90
002-18050-00	NUT	2130	333	021-31600-20	GASKET	100	280
002-38060-00	FLANGE NUT	2130	353	024-00600-10	O RING	300	27
002-38060-00	FLANGE NUT	2170	773	032-30300-10	WOODRUFF KEY	200	70
002-38060-00	FLANGE NUT	2500	277	040-11400-30	PLUG	100	80
002-38080-00	FLANGE NUT	2300	330	043-05900-11	FUEL TANK CAP AY	2600	30
003-10040-00	WASHER	2400	172	044-00600-20	OIL SEAL	100	75
003-11120-00	WASHER	2300	786	044-02502-00	OIL SEAL	100	30
003-13050-00	CLIP	300	202	044-02502-10	OIL SEAL	100	220
003-13050-00	CLIP	400	50	056-11000-30	HOSE CLAMP	2600	92
003-20050-00	SPRING WASHER	2200	218	056-11100-20	HOSE CLAMP	2600	90
003-30050-00	LOCK WASHER	2400	684	056-11300-10	HOSE CLAMP	2600	91
004-35051-60	SCREW AND WASHER AY	2130	332	056-30000-20	WIRE BAND	2400	767
004-35061-00	SCREW AND WASHER AY	2500	617	056-51600-10	CLIP	200	380
004-36031-20	SCREW AND WASHER AY	2400	536	056-60002-50	CLAMP	2170	774
004-36051-60	SCREW AND WASHER AY	2200	311	060-02501-40	BALL BEARING	100	230
004-36061-60	SCREW AND WASHER AY	2400	310	060-02800-21	BALL BEARING	100	40
005-10302-50	COTTER PIN	2300	790	064-15400-11	FUEL FILTER	2600	40
010-01002-00	BOLT	2200	224	064-20047-90	SCREW	2600	50 -13
010-50603-51	STUD	100	70	064-20064-10	GASKET, O-RING	2600	50 -2
010-50802-90	STUD	2110	110	064-20078-10	CUP	2600	50 -3
010-50805-10	STUD	2110	111	064-20093-20	FILTER	2600	50 -1
011-00600-10	FLANGE BOLT	2510	160	064-20103-00	FUEL STRAINER AY	2600	50
011-00600-20	FLANGE BOLT	100	710	064-80015-00	FUEL GAUGE CP	2600	45
011-00600-20	FLANGE BOLT	300	290	065-01401-50	SPARK PLUG	700	100
011-00600-20	FLANGE BOLT	2130	373	065-50002-70	SPARK PLUG CAP	700	110
011-00600-20	FLANGE BOLT	2150	562	073-20026-51	LABEL (EARTH)	2300	928
011-00600-20	FLANGE BOLT	2300	627	073-20045-00	LABEL (HOT&GAS)	2500	956
011-00600-20	FLANGE BOLT	2300	782	073-20045-10	LABEL (SYMBOL-TANK)	2600	948
011-00600-20	FLANGE BOLT	2600	57	073-20053-80	LABEL (90DB)	2500	960
011-00600-50	FLANGE BOLT	2130	372	085-10600-00	RUBBER PIPE	2600	80
011-00600-50	FLANGE BOLT	2170	771	085-10800-00	RUBBER PIPE	2130	354
011-00600-80	FLANGE BOLT	2500	461	132-10KA0-31	COLLET-VALVE	300	95
011-00601-40	FLANGE BOLT	2150	522	226-45001-03	RETURN SPRING	2400	713
011-00601-60	FLANGE BOLT	2130	315	227-75001-03	GROMMET	2400	528
011-00601-80	FLANGE BOLT	2500	272	237-14202-03	VALVE GUIDE	100	20
011-00601-80	FLANGE BOLT	2500	460	251-17302-03	MESH PROTECTOR	2600	85
011-00602-20	FLANGE BOLT	2600	100	251-62350-08	PACKING	2160	610 -17
011-00801-50	FLANGE BOLT	2110	183	251-62449-08	SPRING	2160	610 -41
011-00802-40	FLANGE BOLT	100	630	251-62466-08	DRAIN SCREW	2160	610 -28
011-00802-70	FLANGE BOLT	2110	182	251-62559-08	SEAL	2160	610 -32
011-00803-10	FLANGE BOLT	100	631	269-33701-03	SPRING RETAINER	300	70
011-01001-10	FLANGE BOLT	2150	582	277-10102-41	CRANK CASE CP	100	10
013-00602-60	BOLT AND WASHER AY	700	742	277-11001-31	MAIN BEARING COVER C	100	210

PART NUMBER INDEX LIST

PARTS NUMBER	PARTS NAME	FIG. REF.	PARTS NUMBER	PARTS NAME	FIG. REF.
277-13005-01	CYLINDER HEAD CP	100 610	277-52001-13	BLOWER HOUSING	2150 510
277-15001-23	GASKET (HEAD)	100 620	277-52702-03	BAFFLE 2 (HEAD)	2150 560
277-15011-03	PIPE KNOCK	100 50	277-52711-11	BAFFLE 1(CASE) CP	500 60
277-15011-03	PIPE KNOCK	100 700	277-54101-13	COOLING BLOWER	2150 530
277-15501-01	ROCKER COVER CP	100 680	277-56001-03	PLATE 3	2150 517
277-16001-13	GASKET(ROCKER COVER)	100 690	277-62330-00	CARBURETOR AY	2160 610
277-16010-01	STEM SEAL	100 26	277-62409-08	MAIN JET	2160 610 -22
277-20701-21	CRANKSHAFT CP	200 10	277-62422-08	SLOW JET	2160 610 -5
277-22501-10	CONNECTING ROD AY	200 310	277-62451-08	BRACKET (WIRE)	2160 610 -155
277-23001-03	CONNECTING ROD BOLT	200 320	277-62532-08	THROTTLE SHAFT	2160 610 -11
277-23301-03	PISTON PIN	200 350	277-62536-08	THROTTLE VALVE	2160 610 -1
277-23401-03	PISTON	200 360	277-62581-08	ADJUST SCREW	2160 610 -40
277-23403-03	PISTON	200 361	277-62590-08	VINYL PIPE	2160 610 -191
277-23404-03	PISTON	200 362	277-62595-08	COVER (MOTOR)	2160 610 -404
277-23501-17	PISTON RING SET	200 370	277-63601-13	OIL GAUGE	100 270
277-23502-17	PISTON RING SET	200 371	277-73102-H1	WIRE 2 CP	700 50
277-23503-17	PISTON RING SET	200 372	277-76301-11	OIL SENSOR CP	700 700
277-24401-03	DRIVING SHAFT	2150 580	277-79232-01	FLYWHEEL CP	700 10
277-30411-31	MUFFLER CP (SILENT)	2130 310	277-79431-01	IGNITION COIL CP	700 11
277-32604-08	PACKING	2130 350 -220	277-90301-H0	ACCESSORY TOOL KIT	2900 10
277-32622-20	AIR CLEANER AY	2130 350	277-99001-27	GASKET SET	100 960
277-32632-08	BASE CP	2130 350 -200	278-31601-11	CAM SHAFT CP	300 10
277-32643-18	COVER CP	2130 350 -250	279-33601-03	VALVE SPRING	300 60
277-32661-17	ELEMENT SET	2130 351	279-38701-13	RETURN SPRING	300 38
277-32910-03	INSULATOR	2130 360	279-62500-08	NEEDLE	2160 610 -14
277-33401-H3	INTAKE VALVE	300 80	284-62315-08	SPRING (THROTTLE)	2160 610 -109
277-33501-H3	EXHAUST VALVE	300 90	284-62355-08	BOLT	2160 610 -12
277-35002-01	PIN (ROCKER) CP	300 200	284-62445-08	SPRING (CHOKE)	2160 610 -25
277-35101-03	PIN (CAM SHAFT)	300 25	284-62446-08	SPRING	2160 610 -412
277-35201-13	GASKET (MUFFLER)	2130 320	284-62450-08	O RING	2160 610 -152
277-35601-11	TIMING CHAIN CP	300 150	284-62451-08	O RING	2160 610 -151
277-35902-H3	GASKET 1 (INSULATOR)	2130 361	284-62455-08	SCREW	2160 610 -2
277-35903-H3	GASKET 2 (INSULATOR)	2130 362	284-62455-08	SCREW	2160 610 -4
277-36201-00	ROCKER ARM (IN) AY	300 220	284-62456-08	SCREW	2160 610 -23
277-36202-00	ROCKER ARM (EX) AY	300 225	284-62457-08	SCREW	2160 610 -408
277-36401-03	RELEASE LEVER	300 35	284-62457-08	SCREW	2160 610 -428
277-36501-03	CLIP	300 37	284-62458-08	SCREW	2160 610 -406
277-36902-03	PIN (TENTIONER)	300 166	284-62505-08	FLOAT AY	2160 610 -19
277-36911-03	TENTIONER	300 160	284-62515-08	PIN	2160 610 -15
277-36913-13	CHAIN GUIDE	300 170	284-62520-08	CHOKE LEVER	2160 610 -8
277-37101-03	SPRING (TENTIONER)	300 163	284-62525-08	CHOKE VALVE	2160 610 -3
277-37210-03	TAIL SCREEN COVER	2130 330	284-62540-08	CHAMBER PACKING	2160 610 -18
277-37220-03	SCREEN	2130 331	284-62550-08	FLOAT BODY	2160 610 -16
277-38601-03	PIN (SPRING)	300 34	284-62555-08	JOINT LEVER	2160 610 -410
277-39004-01	BRACKET (A/C) 1 CP	2130 370	284-62561-08	COLLAR	2160 610 -107
277-39701-03	SPONGE (INSULATOR)	2130 365	284-62575-08	BRACKET	2160 610 -420
277-48601-03	PIN (BLIND)	400 20	284-62576-08	BRACKET (MOTOR)	2160 610 -402
277-50401-00	RECOIL STARTER AY	2150 520	284-62580-08	MOTOR	2160 610 -400
277-50402-08	SPIRAL SPRING	2150 520 -1	31B-79011-03	SCREW	2400 665
277-50403-08	REEL	2150 520 -2	32B-30201-01	MOUNT CP(R)	2300 323
277-50404-08	RACHET	2150 520 -5	32B-30202-01	MOUNT CP(L)	2300 322
277-50405-08	FRICTION SPRING	2150 520 -6	32B-30211-01	MOUNT CP(R)	2300 320
277-50406-08	RETAINING RING	2150 520 -10	32B-30212-01	MOUNT CP(L)	2300 321
277-50407-08	FRICTION PLATE	2150 520 -8	332-00050-08	SPRING WASHER	2400 681
277-50408-08	STARTER PORE	2150 520 -3	33B-35001-01	BOTTOM EXT. PLATE CP	2110 180
277-50409-08	STARTER KNOB	2150 520 -4	33B-35501-01	BRACKET (COVER) CP	2500 215



PART NUMBER INDEX LIST

PARTS NUMBER	PARTS NAME	FIG. REF.	PARTS NUMBER	PARTS NAME	FIG. REF.
33B-45009-01	PANEL PLATE CP	2400 505	34G-56351-01	MUF COVER (L) CP	2500 420
33B-46001-03	COVER (COCK)	2400 171	34G-57201-03	SPONGE (TANK)	2510 682
33B-46012-01	BRACKET (COCK)	2400 175	34G-57321-03	SEAL SPONGE (SIDE)	2500 405
33B-46015-01	BRACKET (MICRO)	2400 640	34G-57322-03	SEAL SPONGE (MF17.21)	2500 490
33B-46021-01	CHOKE WIRE CP	2400 710	34G-59001-13	SPONGE (S COVER-R)	2500 380
33B-48091-01	EARTH WIRE CP	2300 440	34G-59002-13	SPONGE (S COVER-L)	2500 390
33B-50001-01	FRONT COVER(UPPER)CP	2400 110	34G-59003-03	SPONGE (BASE)	2300 130
33B-50101-01	FRONT COVER(LOWER)CP	2500 210	34G-59004-03	SPONGE (BASE)	2300 80
33B-50501-01	REAR COVER(UPPER)CP	2500 230	34G-59008-03	SPONGE (S COVER-L)	2500 391
33B-52601-03	BAFFLE	2130 313	34G-90001-03	LABEL (TRADE MARK)	2400 900
33B-56101-11	SEPARATOR (A/C)	2510 150	34G-91001-03	LABEL (TRADE MARK-R)	2500 900
33B-56102-11	SEPARATOR (SEL)	2510 151	34G-92001-03	LABEL (TRADE MARK-L)	2500 901
33B-56411-01	MUF COVER (REAR)CP	2500 410	34G-96006-23	LABEL (SPEC)	2500 904
33B-57001-03	SEAL RUBBER(TANK)	2510 680	34K-20903-08	RECTIFIER	2200 360
33B-57002-03	SEAL SPONGE(MUF)	2510 681	34K-20904-08	SCREW	2200 362
33B-57005-03	SEAL RUBBER	2500 425	34K-20905-08	SCREW	2200 680
33B-57103-03	GLASS WOOL	2500 482	34K-20907-08	BAND	2200 767
33B-57105-03	GLASS WOOL (M-COVER)	2500 480	352-45620-08	CIRCUIT BREAKER	2400 660
33B-60104-01	FUEL TANK CP	2600 10	353-49901-08	WING NUT	2400 685
33B-66001-03	RUBBER PIPE	2600 81	353-49902-08	NUT	2400 683
33K-41811-03	MICRO SWITCH	2400 615	353-49903-08	WASHER	2400 682
33K-41814-08	TAPPING SCREW	2400 642	353-49904-08	TAPPING SCREW	2400 480
33K-42010-03	CONTROL DIAL	2400 630	358-40621-08	AC CONCENT (FINLAND)	2400 530
33K-42020-03	CHOKE REEL	2400 636	363-45700-08	TERMINAL BOLT	2400 672
33K-42030-13	PLATE	2400 638	363-45701-08	TERMINAL BOLT	2400 671
33K-94002-03	LABEL (CAUTION)	2500 910	388-88001-03	SCREW AND WASHER AY	2400 680
34B-20061-01	ROTOR CP	2200 220	391-39000-13	RUBBER (TANK)	2600 108
34B-21001-08	BEARING	2200 222	393-30603-01	WHEEL CP	2300 180
34B-21051-01	STATOR CP	2200 210	980-20082-80	FLANGE NUT	2130 322
34B-21051-08	BOLT	2200 214	980-40081-10	STR PIN -8X10	2150 515
34B-23071-01	REAR COVER	2200 260	KU3-10710-21	INV & E/G C/U CP(F4)	2200 302
34B-41718-10	CONTROL PANEL AY	2400 500	KU3-11770-11	MONITOR C/U CP(INV2)	2400 590
34B-48012-01	WIRE HARNESS CP	2400 430			
34B-48091-01	EARTH WIRE CP	2300 441			
34B-48101-01	WIRE HARNESS(E/G) CP	2200 430			
34B-49022-03	SHEET (PANEL VR) 22	2400 510			
34B-55001-03	COVER (INVERTOR)	2200 305			
34B-57310-03	SEAL SPONGE FC1	2500 280			
34B-57311-03	SEAL SPONGE FC2	2400 470			
34B-57311-03	SEAL SPONGE FC2	2500 290			
34G-30001-01	FRAME CP	2300 10			
34G-51001-01	SIDE COVER (R) CP	2500 310			
34G-51101-01	SIDE COVER (L) CP	2500 330			
34G-53002-01	BASE PLATE(UPPER) CP	2300 110			
34G-53101-01	BASE PLATE(LOWER) CP	2300 50			
34G-54101-01	FAN (SILENT) CP	2110 185			
34G-55001-01	COVER(RECOIL KNOB)CP	2500 610			
34G-55002-01	PLATE CP	2500 615			
34G-55101-03	SIDE RUBBER SEAL	2500 315			
34G-55101-03	SIDE RUBBER SEAL	2500 335			
34G-55201-01	SHAFT (WHEEL) CP	2300 350			
34G-55211-21	DRAIN GUIDE CP	2300 625			
34G-55301-01	COVER BOLT CP	2500 360			
34G-55302-01	SPACER CP	2500 365			
34G-56002-10	BRAKE -2 AY	2300 370			
34G-56102-13	SPRING (BRAKE)	2300 376			