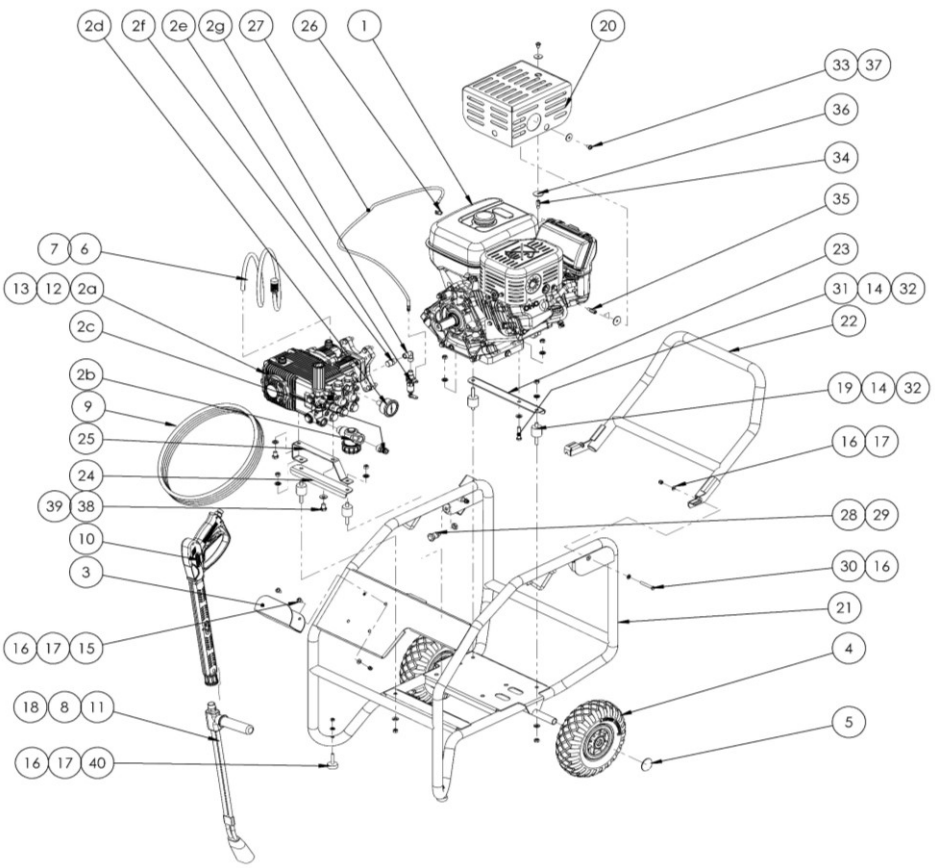


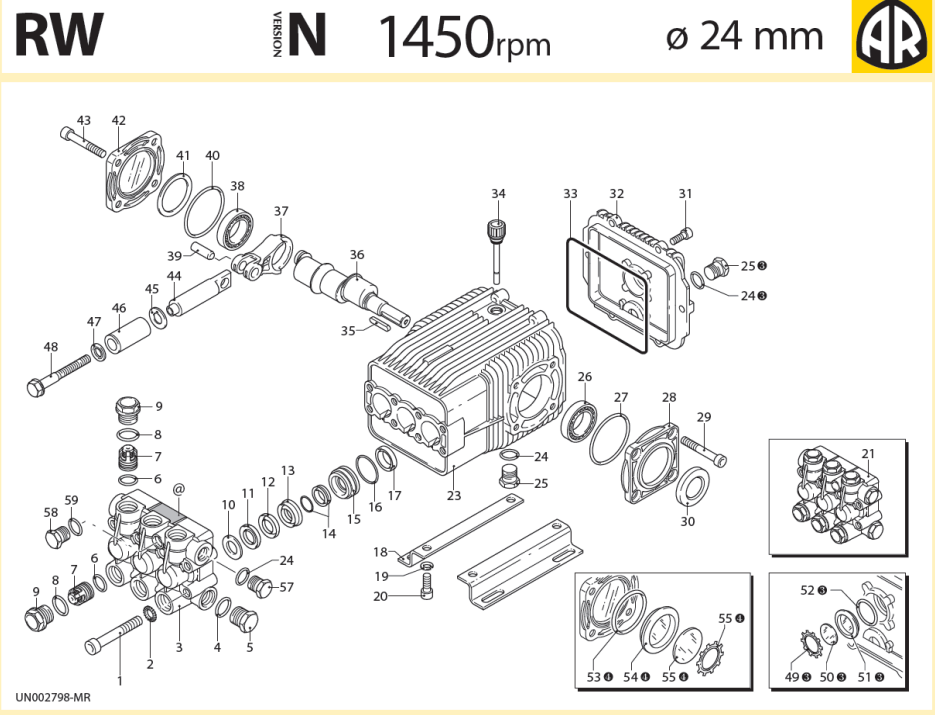
# HPSTAR 200-21R

N°	Référence NAV	Désignation NAV	Quantité
1	EX400DM5020	EX40DUL DUAL F/H,CAD.SH.DEF	1
2	HP200-21R-KITPOMPE	KIT POMPE HPSTAR 200-21 R	1
3	HPSTAR100-200-300-01	PORTE FLEXIBLE	1
4	ZRED260I	ROUE DIAM 260 INCREVABLE	2
5	ZGoup-D20	CALOTTE D20	2
6	ZTUVAUPVC2	TUYAU PVC DN6	1
7	ZFILT-DETER-D6-8	FILTRE DETERGENT DIA6-8	1
8	ZBUSE-HP-0625	BUSE HP NPT M 1/4 CERAMIC 0625	1
9	ZFLEX-1T-10M-250	FLEXIBLE 10M 1 T 250B M22X1,5F	1
10	ZPIST-EXT-22-MF-22	PISTOLET + RALLONGE 350BAR	1
11	ZLANCE-D-F22-250	LANCE DOUBLE 250BAR	1
12	ZVISCHC5/16X25 I	VIS CHC 5/16*25 UNC INOX	4
13	ZGROWERM8 I	RONDELLE GROWER M8 INOX	4
14	ZPLATEM8M I	RONDELLE MOYENNE M8 INOX	10
15	ZVISBHCEIM6X16	VIS BHC M6*16 EMBASE INOX	2
16	ZCONTACTM6I	RONDELLE MOYENNE M6 INOX	8
17	ZECROUBAGM6I	ECROU BAG NYLON M6 INOX	6
18	ZBUSE-BP-5040	BUSE BP NPT M1/4 5040	1
19	MER-909328	PLOT A 3030 M8 15 X 35	4
20	ZGRILLEECHAP-04	GRILLE DE POT EX40 DUL	1
21	HPSTAR300-010	CHASSIS	1
22	HPSTAR300-020	BRANCARD	1
23	HPSTAR200-21R-040	CORNIERE MOTEUR	1
24	HPSTAR200-21R-050	CORNIERE POMPE	1
25	HPSTAR200-21R-060	PATTE SUPPORT POMPE	1
26	HP2205-210-V1	ARRRET GAINE	1
27	ZCABL-ACC-1	CABLE ACCELERATEUR NHP 1	1
28	ZPION-INDEXAGE	PION INDEXAGE	1
29	ZECROUBASM10-PF	ECROU BAS M10 X1,0 PAS FIN	1
30	ZVISCHCM6X50	VIS CHC M6 X 50 BOMBEE INOX	2
31	ZVISTHM8X45	VIS TH M8*45 ZBJ	1
32	ZECROUM8 I	ECROU HU M8 INOX	9
33	ZVISTTEM6X12	VIS TORX M6*12 ZBJ A EMBASE	3
34	ZENTRET-MF-M6-L15	ENTRETOISE MF M6 L15	2
35	ZENTRET-MF-M6-L20	ENTRETOISE MF M6 L20	1
36	ZPLATEM6L	RONDELLE TRES LARGE M6 DIA30	3
37	ZPLATEM6L	RONDELLE LARGE M6 DIA25	3
38	ZVISTHM10X20	VIS TH M10*20 ZBJ	2
39	ZGROWERM10	RONDELLE GROWER M10 BRUT	2
40	ZPLOT-CAOU-M6-D30	PLOT CAOUTCHOUC M6 D30 L38 H11	2
<b>2 HP200-21R-KITPOMPE KIT POMPE HPSTAR 200-21R</b>			
2-a	RW-18.20-H-N-DX	POMPE RADIALE RED 200-21	1
2-b	ZFILT-1/2-FM-1/2	FILTRE EAU NHP MF G1/2	1
2-c	ZRACC-JARD-M1/2	RACCORD A BILLE MALE G1/2	1
2-d	ZMANO-D50-AR-250	MANOMETRE D50 G1/4 AR 0-250	1
2-e	Z9.0130.00	CONTROLEUR ACCELERATEUR NHP	1
2-f	ZADAPT-1/4-MM-3/8	ADAPTEUR MG1/4-MG3/8	1
2-g	ZADAPT-1/4-FF-1/4-90	ADAPTEUR FBSP1/4-90°	1



# RW-18.20-H-N-DX

N°	REF. ANNOVI	DESCRIPTION	QUANTITE
1	2980100	VITE TCEI M10x70 UNI 5931 Z/B	8
2	650530	RONDELLA ZIGRINATA 10,5x16x1 Z/B	8
3	2980110	TESTA POMPA NICHELATA	1
4	180101	OR 17,5x2	1
5	960870	TAPPO 1/2" GAS NICHELATO	1
6	880830	OR 15,54x2,62 75 SH(RIF.3062)	6
7	1389051	VALVOLA COMPLETA SERIE AR 138	6
8	960160	OR 17,86x2,62(RIF.123)	6
9	1380740	TAPPO VALVOLA NICHELATO	6
10	960110	ANELLO APPOGGIO GUARNIZIONE D.18x32	3
11	1382740	GUARNIZIONE DM 32x18x7/4,5 PARK VEDI DIS.	3
12	2340310	ANELLO ANTIESTRUSIONE 18x32	3
13	2980070	GUIDA PISTONE ANTERIORE D.18 CORTO	3
14	1942690	GUARN W2 1805 Q5023 18x26x5,5/3+ANELLO W3 1026 W5001 P/N: W2	3
15	1942480	GUIDA PISTONE D.18 POSTERIORE(2 PEZZI)	3
16	820490	OR 34,65x1,78(RIF.2137)	3
17	1940560	ANELLO TENUTA 22x32x5,5/7 BADSLX27	3
18	1940370	PIEDE	2
19	200231	GROWER 10,5x2,5 RINF DEIDROGEN. Z/B	4
20	1940380	VITE TCEI M10x18 UNI 5931 Z/B	4
21	2989201	PREM.TESTA 2980110 D.18 NICHELATA	1
22	1941330	CORPO POMPA	1
23	740290	OR 14x1,78(RIF.2056)	3
24	1980740	TAPPO 3/8" GAS(OTTONE)	2
25	1941370	CUSCINETTO 30x62x21,25 32206A	1
26	1941380	OR 66,34x2,62 NBR	1
27	1941240	SUPPORTO APERTO PER CUSCINETTO	1
28	850370	VITE TCEI M8x16 UNI 5931 Z/B	4
29	820680	ANELLO TENUTA 30x52x7 BA	1
30	1200430	VITE TCEI M6x16 UNI 5931 Z/B	6
31	1949010	PREM.COPERCHIO POSTERIORE 1940760 COMPLETO	1
32	1940410	OR 13x3	1
33	1140370	TAPPO OLIO A.R. 114/37 L.80mm CON DR E SACCHETTO CON CERNIE	1
34	650250	LINGUETTA 8x7x40 UNI 6604-69 DIN 6885(FORMA A)	1
35	2980040	ALBERO ECCENTRICO	1
36	2980010	BIELLA FINITA	1
37	1140420	CUSCINETTO 25x62x18,25 30305A	3
38	1940060	SPINOTTO DE14X36	3
39	1941380	OR 66,34x2,62 NBR	1
40	1941390	SPESSORE 0,05 mm	1/3
41	1941400	SPESSORE 0,10 mm	1/3
41	1941410	SPESSORE 0,19 mm	1/3
41	1941420	SPESSORE 0,25 mm	1/3
42	1949011	PREM.COPERCHIO LATERALE 1941250 COMPLETO	1
43	850370	VITE TCEI M8x16 UNI 5931 Z/B	4
44	1940960	PISTONE DI GUIDA	3
45	1383190	DISCO SEPARATORE 25x10,1x0,3	3
46	1941020	PISTONE DE18x10x48	3
47	1340600	RONDELLA 6x12x1 RAME RICOTTO	3
48	1941640	VITE TE M6x60 UNI 5737 A2-70	3
49	1260430	ANELLO ELASTICO ZJ 25	1
50	1780690	DISCO DI CONTRASTO	1
51	1260250	LIVELLO OLIO	1
52	1140450	OR 20,24x2,62(RIF.3081)	1
53	100410	#N/A	1
54	1941270	VETRINO	1
55	1941260	DISCO DI CONTRASTO	1
56	1941290	ANELLO ELASTICO ZJ 40	1
57	1981180	TAPPO 3/8" GAS NICHELATO	1
58	1380690	TAPPO 1/4" GAS NICHELATO	1
59	820510	OR 10,82x1,78(RIF.2043)	1



# PART KIT

KIT	Part Number	Description	Quantity
<b>KIT A</b>			
7	42169	valves	6
6			6
<b>KIT B</b>			
46	2872	pistons ø18	3
<b>KIT C</b>			
17			3
27			1
30	42170	oil seals	1
33			1
40			1
<b>KIT E</b>			
10			3
11			3
12	42171	water seals ø18	3
14			3
16			3
<b>KIT H</b>			
13	42172	pistons guide	3
15			3

