



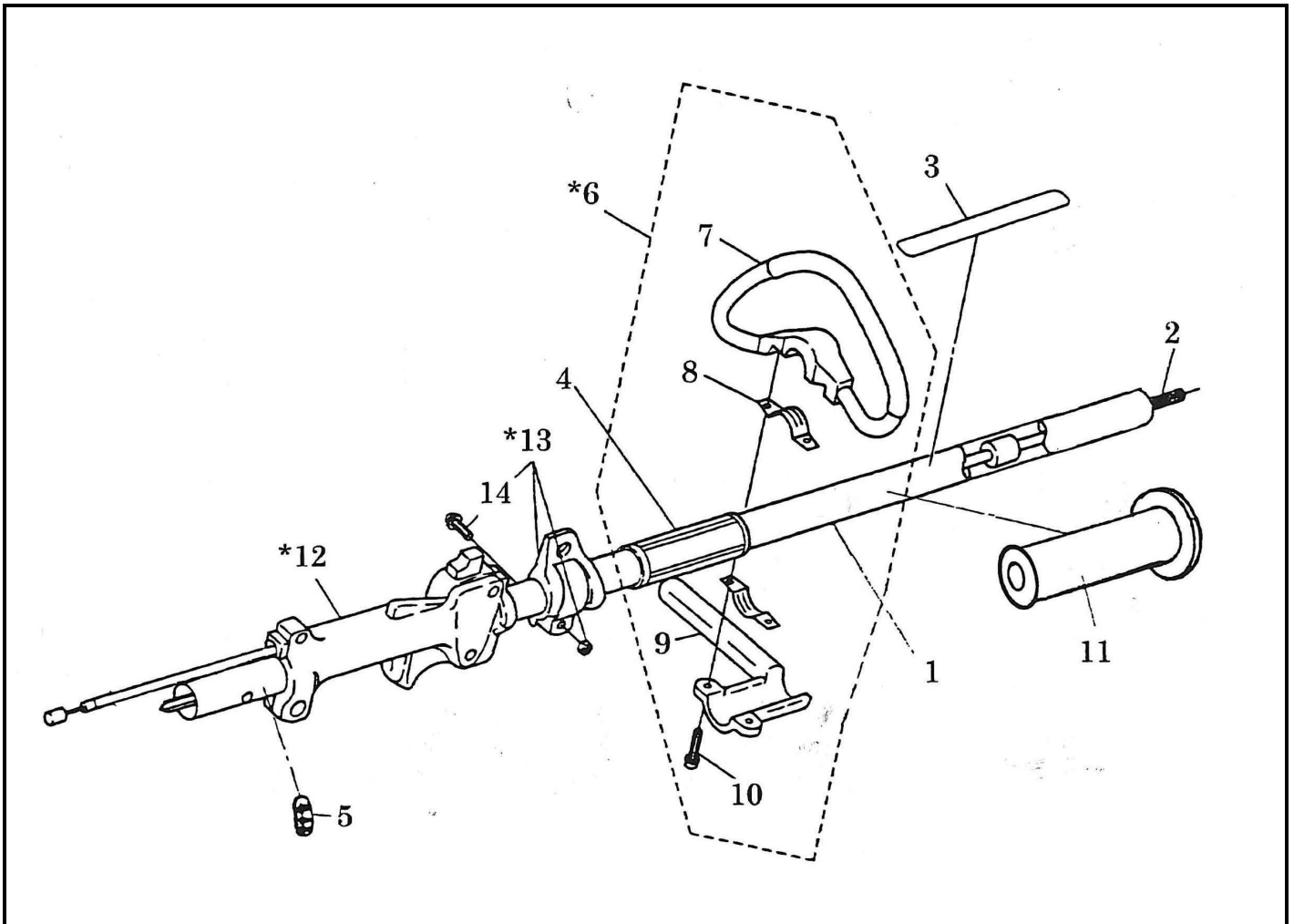
PARTS CATALOG

Model CHG-253

MACHINE BODY,
CONTROL LEVER ASSY,
TRIMMER UNIT,
ENGINE BODY,
CARBURETOR ASSY,
ACCESSORY ,

MACHINE BODY

CHG-253 PARTS LIST

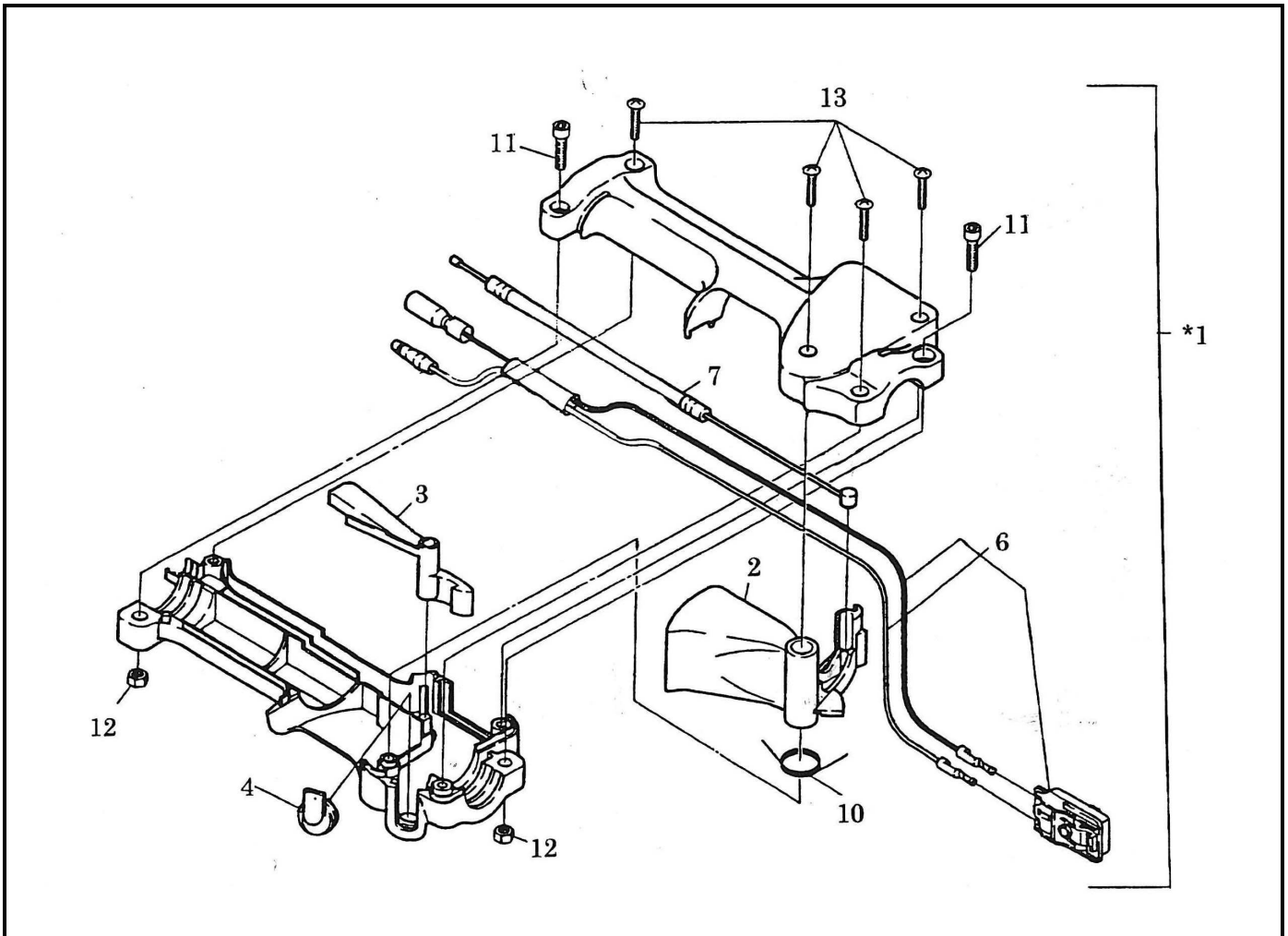


KEY NO.	PART NO.	DESCRIPTION	Q'TY	REMARKS
1	6211015001	Pipe,shaft compl.	1	
2	6191500401	Shaft	1	
3	6019006010	Label,caution	1	
4	6271501500	Spacer	1	
5	6259514700	Label,caution	1	
*6	6214014001	Handle compl.(incl.7-10)	1	
7	6274004010	Loop handle	1	
8	6214014010	Guard stay	2	
9	6274004020	Loop handle bar	1	
10	6274004041	Socket head bolt(M6x18 SW)	2	
11	6014503800	Grip	1	
*12	6015001000	Control lever assembly	1	
*13	6254019000	Hanger assernbly(incl.14)	1	
14	0043605200	Screw assembly(M5x20 S SW)	1	

CONTROL LEVER ASSY

FUJIROBIN INDUSTRIES LTD.

CHG-253 PARTS LIST

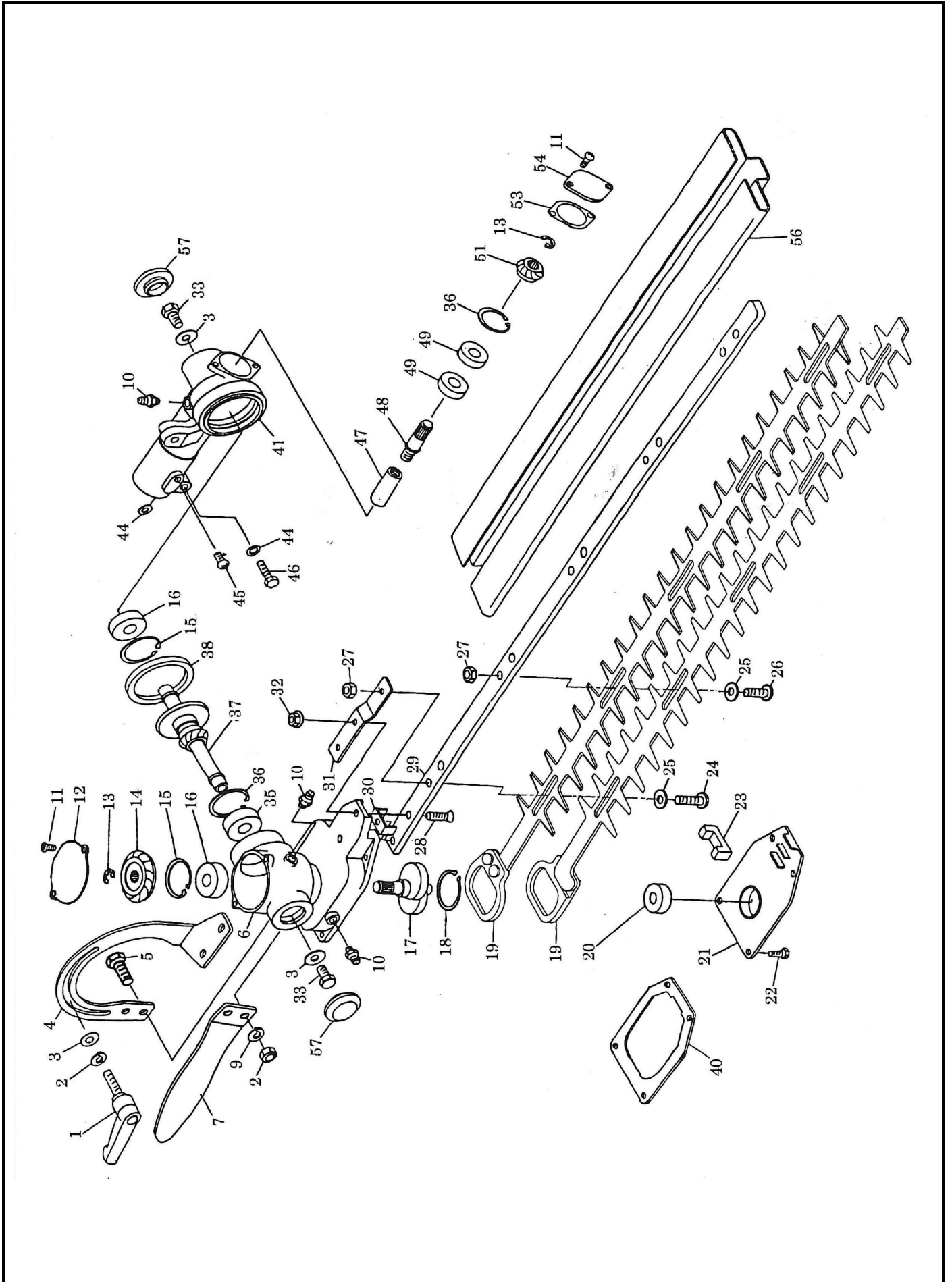


KEY NO.	PART NO.	DESCRIPTION	Q'TY	REMARKS
*1	6015001000	Control lever assembly(incl.2-4,6,10-13)	1	
2	6195006030	Lever	1	
3	6215023060	Lever	1	
4	6195006150	Top	1	
6	6015001010	Switch assembly	1	
7	6015001020	Wire compl.	1	
10	6195006050	Spring	1	
11	0119059720	Socket head bolt(M5x20)	2	
12	6415011160	Nut	2	
13	6195006060	Tapping screw	4	

TRIMMER UNIT

FUJIROBIN INDUSTRIES LTD.

CHG-253 PARTS LIST



TRIMMER UNIT

FUJIROBIN INDUSTRIES LTD.

CHG-253 PARTS LIST

KEY NO.	PART NO.	DESCRIPTION	Q'TY	REMARKS
1	R034-000900	Lever,clamp	1	
2	K210-060000	Spring washer	3	
3	K207-060209	Washer	3	
4	A224-145003	Plate	1	
5	K054-060220	Bolt assembly,cross recess	2	
6	A224-148002	Case A	1	
7	A224-141003	Handle	1	
9	K150-060000	Nut	2	
10	R055-000100	Nipple	3	
11	K016-040080	Screw assembly	4	
12	A196-112004	Plate	1	
13	K280-006000	Clip	2	
14	A023-500444	Gear	1	
15	K282-026000	Snpring,inner	2	
16	K354-060000	Ball bearing	2	
17	A024-000053	Crankshaft	1	
18	K283-028000	Snpring,outer	1	
19	A224-143009	Blade	2	
20	K351-006080	Ball bearing	1	
21	A224-153003	Case lower	1	
22	K054-040120	Bolt assembly,cross recess	4	
23	A224-112004	Felt	1	
24	A040-002009	Screw	1	
25	008-250	Washer	5	
26	A040-001009	Screw	4	
27	K164-060000	U-nut	5	
28	K031-050200	Screw	2	
29	A224-144003	Guide plate	1	
30	A224-131004	Guide	1	
31	A224-108004	Plate	1	
32	K162-050000	Frangle nut	2	
33	K054-060120	Bolt assembly,cross recess	2	
35	K354-006080	Ball bearing	1	
36	K282-022000	Snpring,inner	2	
37	A224-130004	Gear compl.	1	
38	K440-P41000	Ring-O	1	
40	A224-154004	Packing	1	

TRIMMER UNIT

FUJIROBIN INDUSTRIES LTD.

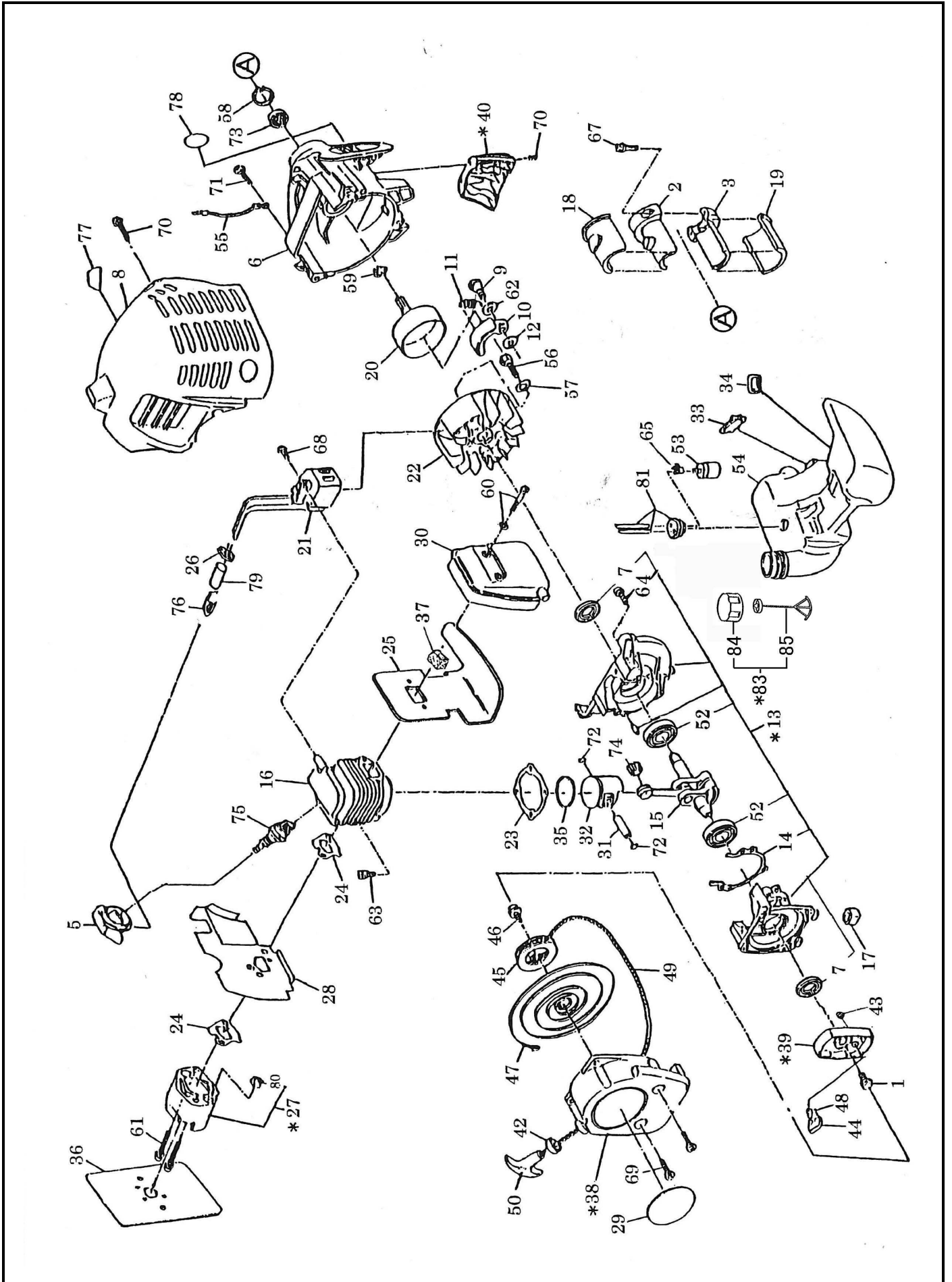
CHG-253 PARTS LIST

KEY NO.	PART NO.	DESCRIPTION	Q'TY	REMARKS
41	A224-149002	Case B	1	
44	K200-050000	Washer	2	
45	K010-050100	Screw pan head	1	
46	K054-050250	Bolt assenbly,cross recess	1	
47	A224-146004	Joint R	1	
48	A196-109004	Shaft,gear B	1	
49	K352-069000	Ball bearing	2	
51	A023-500434	Gear	1	
53	A196-114004	Packing	1	
54	A196-113004	Plate	1	
56	A028-200039	Blade cover	1	
57	A224-147004	Cap	2	

ENGINE BODY

FUJIROBIN INDUSTRIES LTD.

CHG-253 PARTS LIST



ENGINE BODY

FUJIROBIN INDUSTRIES LTD.

CHG-253 PARTS LIST

KEY NO.	PART NO.	DESCRIPTION	Q'TY	REMARKS
1	5235504700	Bolt assembly(M6x14W)	1	
2	6251509500	Bracket,pipe 1	1	
3	6251509600	Bracket,pipe 2	1	
5	5237503301	Cap,plug	1	
6	6211504204	Case,clutch	1	
7	0440129970	Oil seal	2	
8	5255015000	Cover,cylinder compl.	1	
9	5928500400	Bolt,clutch	2	
10	5928500000	Shoe,clutch	2	
11	5928500100	Spring	1	
12	6252500900	Washer	2	
*13	5231011001	Crankcase assembly(incl.7,14,52,64)	1	
14	5231502202	Gasket,crankcase	1	
15	5232017000	Crankshaft compl.	1	
16	5231501804	Cylinder	1	
17	5216500200	Damper	2	
18	6251506604	Damper,pipe 1	1	
19	6251506703	Damper,pipe 2	1	
20	6212014000	Drum,clutch compl.	1	
21	5237031024	Coil	1	
22	5257002010	Flywheel	1	
23	5231502304	Gasket,cylinder	1	
24	5233503902	Gasket,insulator	2	
25	5253500602	Gasket,muffler	1	
26	5237503202	Grommet	1	
*27	5233014000	Insulator compl.(incl.80)	1	
28	5253501001	Insulator carburetor	1	
29	6019501700	Label,model	1	
30	5233037003	Muffler,exhaust(incl.37)	1	
31	5232502600	Pin,piston	1	
32	5232501902	Piston	1	
33	5036500200	Plate	1	
34	5036500300	Plate	1	
35	5242500701	Ring,piston	1	
36	5253500300	Spacer,gasket T	1	
37	5233506600	Spark arrestor	1	
*38	5255006002	Stater,rewind(incl.39,42-50)	1	
*39	5235025001	Pulley(incl.43,44,48)	1	
*40	5219002000	Stand set(incl.70)	1	

ENGINE BODY

FUJIROBIN INDUSTRIES LTD.

CHG-253 PARTS LIST

KEY NO.	PART NO.	DESCRIPTION	Q'TY	REMARKS
42	5255001040	Damper	1	
43	5215003040	E-clip	1	
44	5415011010	Ratchet	1	
45	5235024012	Reel	1	
46	5425003010	Set screw	1	
47	5235024032	Spiral spring	1	
48	5245007020	Return spring	1	
49	5235024022	Starter,rope	1	
50	5225004020	Starter,knob	1	
52	0600129850	Ball bearing(#6001C3)	2	
53	5236503900	Filter	1	
54	5256501304	Tank,fuel	1	
55	6165501200	Wire	1	
56	0011306160	Bolt assembly	1	
57	0031206000	Washer	1	
58	0031432000	Snpring,inner	1	
59	0031512000	Snpring,outer	1	
60	0119059600	Socket head bolt(M5x45W)	2	
61	0119059640	Socket head bolt(M5x25 W,SW)	2	
62	0200089911	Washer	2	
63	0119059730	Socket head bolt(M5x20 W,SW)	2	
64	0140059520	Screw(M5x25 W,SW)	3	
65	0561059990	Hose clamp	1	
67	0119059950	Socket head bolt(M5x18 SW)	2	
68	0140049920	Screw(M4x20 W,SW)	2	
69	0140059450	Screw(M5x18 W,SW)	4	
70	0140059480	Screw assembly(M5x14 W,SW)	3	
71	0140059700	Screw(M5x20 W,SW)	3	
72	0565089970	Clip	2	
73	0600129950	Ball bearing(#6201DD)	1	
74	0610089990	Needle roller bearing	1	
75	0650149721	Plug,spark(BMR7A)	1	
76	0654009931	Spring,plug cap	1	
77	0734509931	Label	1	
78	0739209980	Label	1	
79	0851069920	Tube	1	
80	0021705000	Nut	2	
81	0851199971	Tube	1	

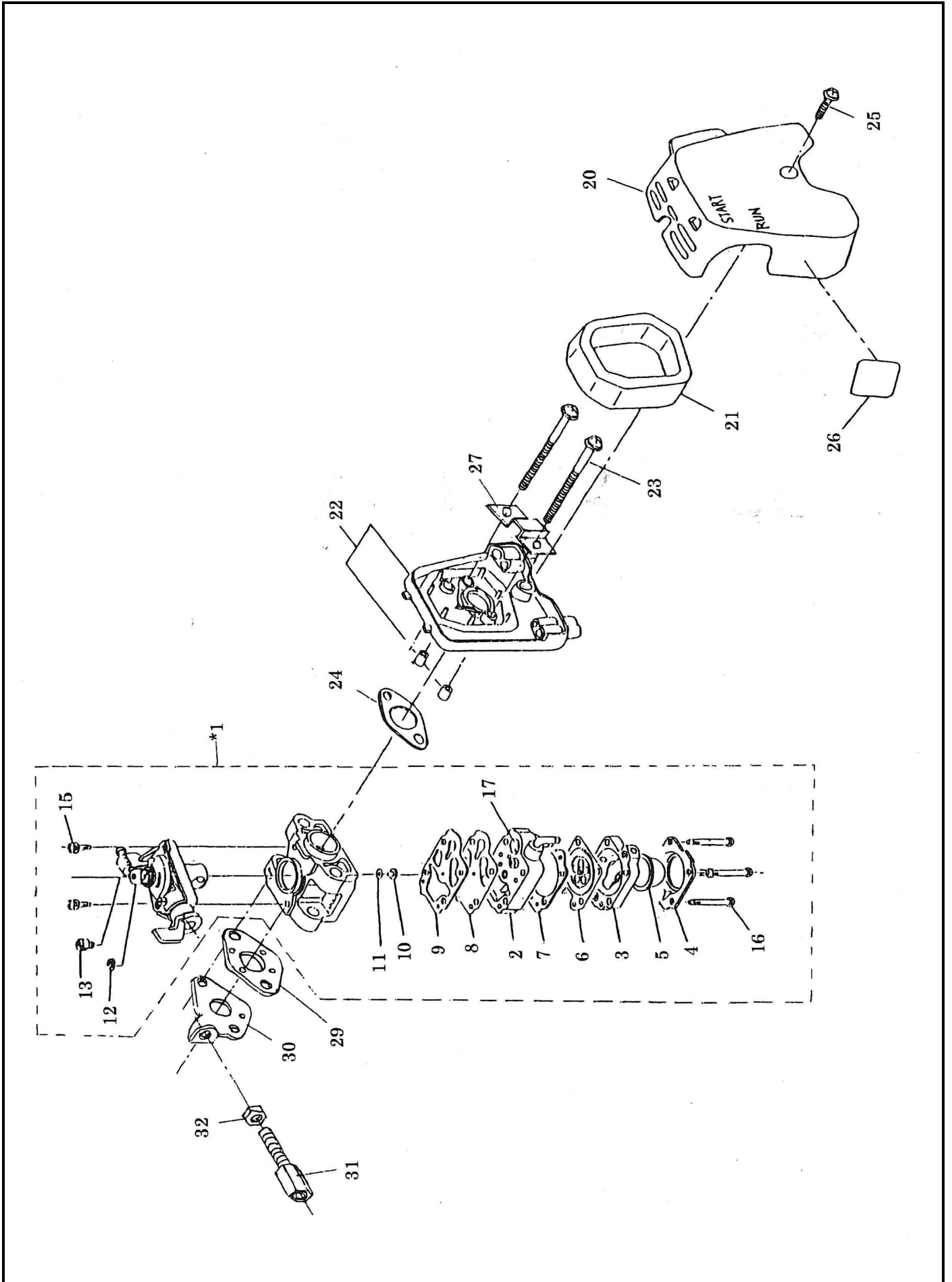
ENGINE BODY

FUJIROBIN INDUSTRIES LTD.

CHG-253 PARTS LIST

KEY NO.	PART NO.	DESCRIPTION	Q'TY	REMARKS
*83	5256059000	Cap, fuel tank (incl. 84,85)	1	
84	5256058000	Cap, fuel tank	1	
85	5256067000	Strap unit	1	

CHG-253 PARTS LIST



CARBURETOR ASSY

FUJIROBIN INDUSTRIES LTD.

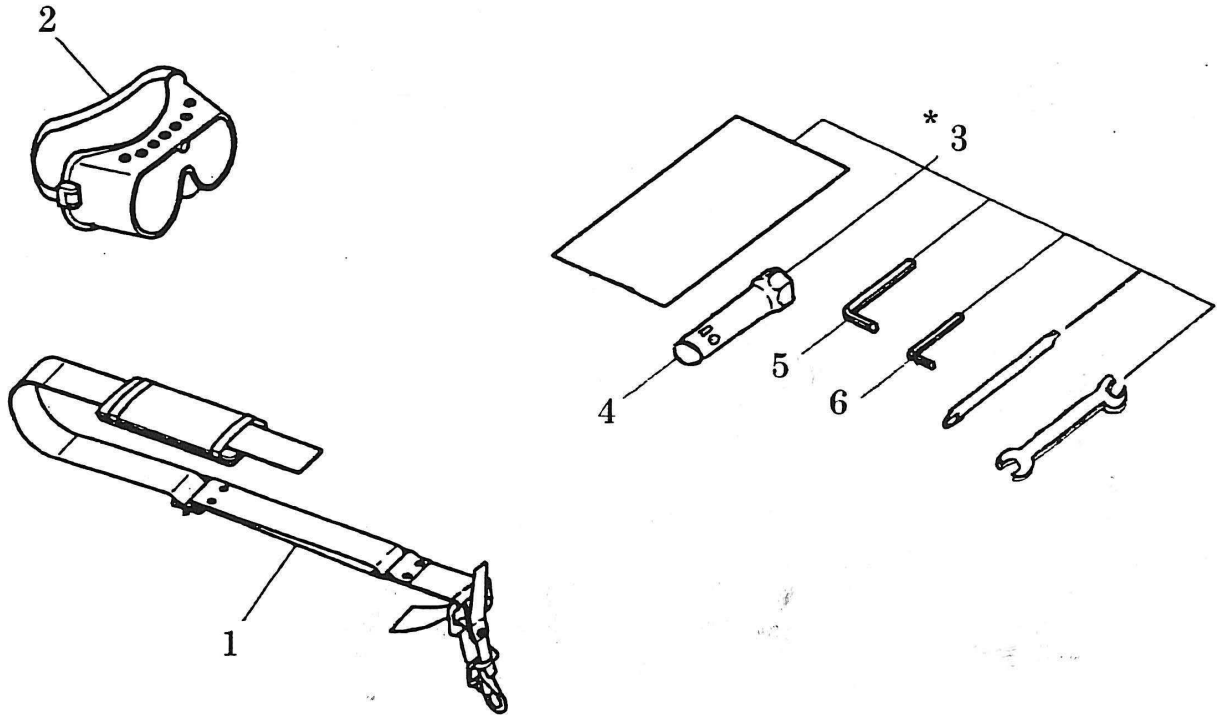
CHG-253 PARTS LIST

KEY NO.	PART NO.	DESCRIPTION	Q'TY	REMARKS
*1	5256065000	Carburetor(incl.2-17)	1	
2	5236046130	Body assembly-pump	1	
3	5236046060	Body assembly-air purge	1	
4	5236046050	Cover-primer pump	1	
5	5246001150	Pump-primer	1	
6	5316005250	Diaphragm assembly-met'g	1	
7	5236046040	Gasket-met'g diaphragm	1	
8	5246001040	Diaphragm-pump	1	
9	5246001030	Gasket-pump	1	
10	5256065010	Jet	1	
11	5246001010	Ring-O	1	
12	5316005120	Ring-spring ret aining	1	
13	5236018040	Swivel	1	
15	5206008030	Screw	2	
16	5236046010	Screw	4	
17	5016004010	Screen-inlet	1	
20	5253502600	Case,air cleaner	1	
21	5233504700	Element,air cleaner	1	
22	5253021000	Plate,cleaner compl	1	
23	0140059470	Screw	2	
24	5233504200	Gasket,carburetor	1	
25	0043605140	Screw assembly(M5x14 W,SW)	1	
26	0736309980	Label	1	
27	5013502400	Plate,air cleaner	1	
29	5103502800	Gasket,air cleaner	1	
30	5256501900	Bracket cable	1	
31	0149069981	Adjust screw	1	
32	0022706000	Nut	1	

ACCESSORY

FUJIROBIN INDUSTRIES LTD.

CHG-253 PARTS LIST



KEY NO.	PART NO.	DESCRIPTION	Q'TY	REMARKS
1	6207003002	Band assembly	1	
2	6029015000	Protector	1	
*3	5109006000	Tool(incl.4-6)	1	
4	0713199900	Box wrench	1	
5	0717059990	Wrench,socket head	1	
6	0717049990	Wrench,socket head	1	