



PARTS CATALOGUE

MA19071030 (7JDB) EUR



1T7JD-300EP

()

MA19071030
PARTS CATALOGUE
©2019 by Yamaha Motor Co., Ltd.
1st edition, February 2019
All rights reserved.
Any reprinting or unauthorized use
without the written permission of
Yamaha Motor Co., Ltd.
is expressly prohibited.
Printed in Japan.

FOREWORD

This Parts Catalogue is related to the parts for the model(s) on the cover page. When you are ordering replacement parts, please refer to this Parts Catalogue and quote both part numbers and part names correctly.

1. Modifications or additions which have been made after the issue of the Parts Catalogue will be announced in the Parts News.
It is advisable that you make the necessary corrections to the Parts Catalogue according to the Parts News.

2. Abbreviations

The following abbreviations are used in this Parts Catalogue.

“UR” Use specified parts number.

“UN” Use as many as needed.

“AP” Alternate Parts

“LM” Locally Made (Parts need to be ordered locally)

“F#” Frame No. (Applicable machine No.)

“O/S” Over Size

3. The number of components for assembly

- Parts, which are to be supplied in an assembly, are listed with a dot (.) in front of the part name as shown below.
- The numeral appearing to the right of each component part indicates the quantity of parts for each assembly unit.

PART NO.	DESCRIPTION	Q'TY	REMARKS
2F5-83310-60	FRONT FLASHER LIGHT ASSY	2	
115-83311-60	.BULB (6V-18W)	1	

4. Applicable colours of graphics are represented in the “REMARKS” as shown below.

PART NO.	DESCRIPTION	Q'TY	REMARKS
2N4-24110-00-X5	FUEL TANK COMP.	2	MXR
3J1-24240-10	.GRAPHIC, FUEL TANK	1	FOR MXR

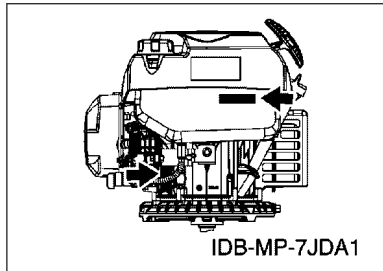
5. Note that the illustrations for reference in finding parts numbers are not to be used for assembling. When assembling, please use the applicable service manual.

6. The asterisk (*) before a reference number indicates modified items after the first edition.

FOREWORD

7. Applicable Serial No.

Frame Serial No.



8. Applicable Colour Code (The (*) mark shows Model colour.)

[illegible]

FOREWORD

Engine Serial No.

This parts catalogue is related to the parts for the models in the list below.

MODEL CODE	MODEL NAME	SPECIFICATION (OUT LINE)	ENGINE SERIAL NO.
7JDB	MA19071030	VERTICAL SHAFT FOR LAWNMOWER	7JDB-9000101

CONTENTS

CYLINDER.....1
CRANKSHAFT & PISTON.....2
GOVERNOR.....3
CAMSHAFT & VALVE.....4
AIR SHROUD & STARTER.....5
INTAKE.....6
EXHAUST.....7
CRANKCASE.....8
FUEL TANK.....9
ELECTRICAL.....10
EMBLEM & LABEL.....11

INDEX

NUMERICAL INDEX.....12

[illegible]

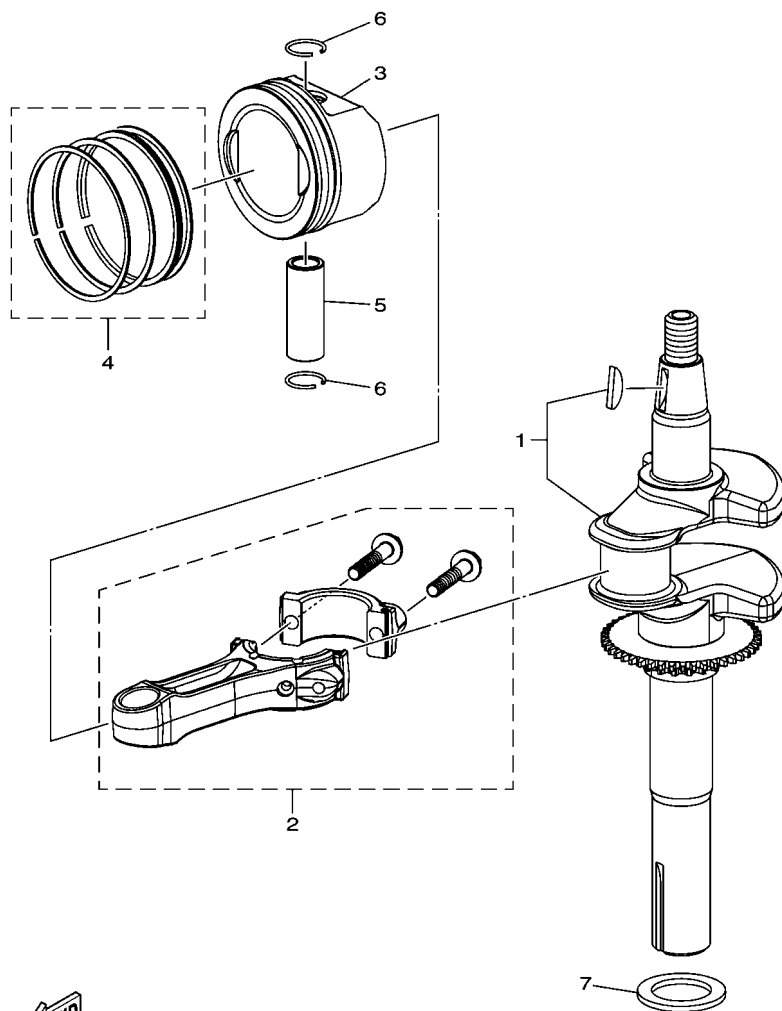


FIG. 2 CRANKSHAFT & PISTON

[illegible]

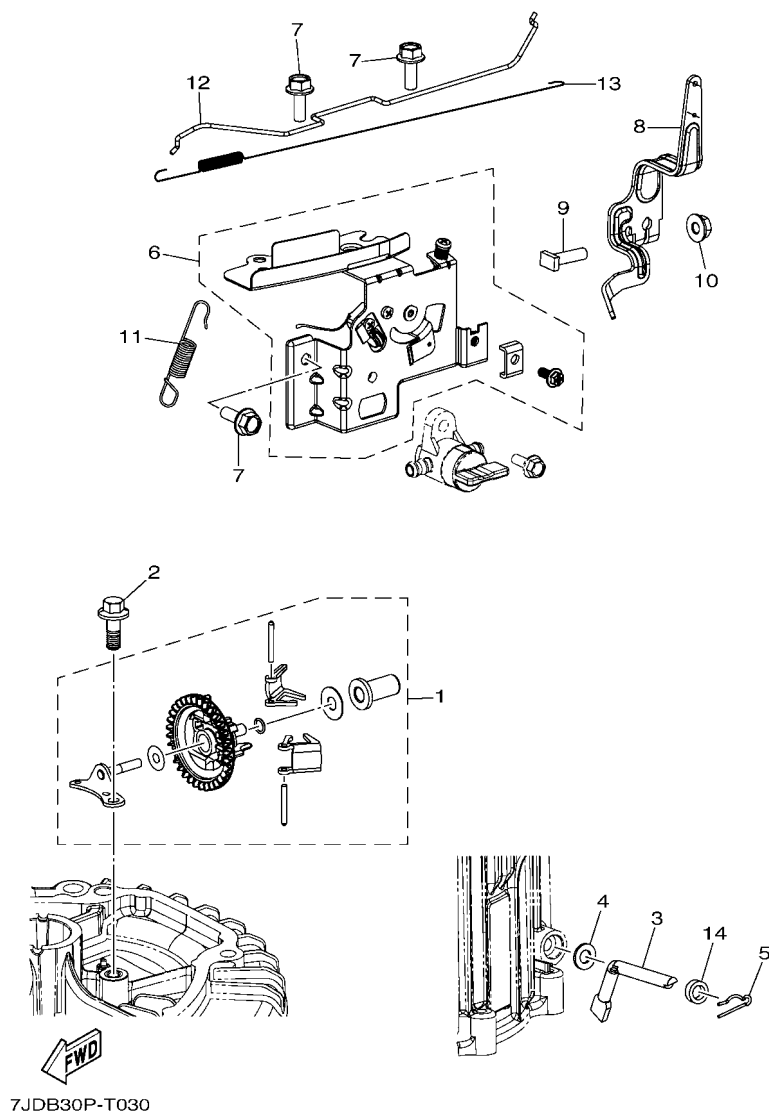
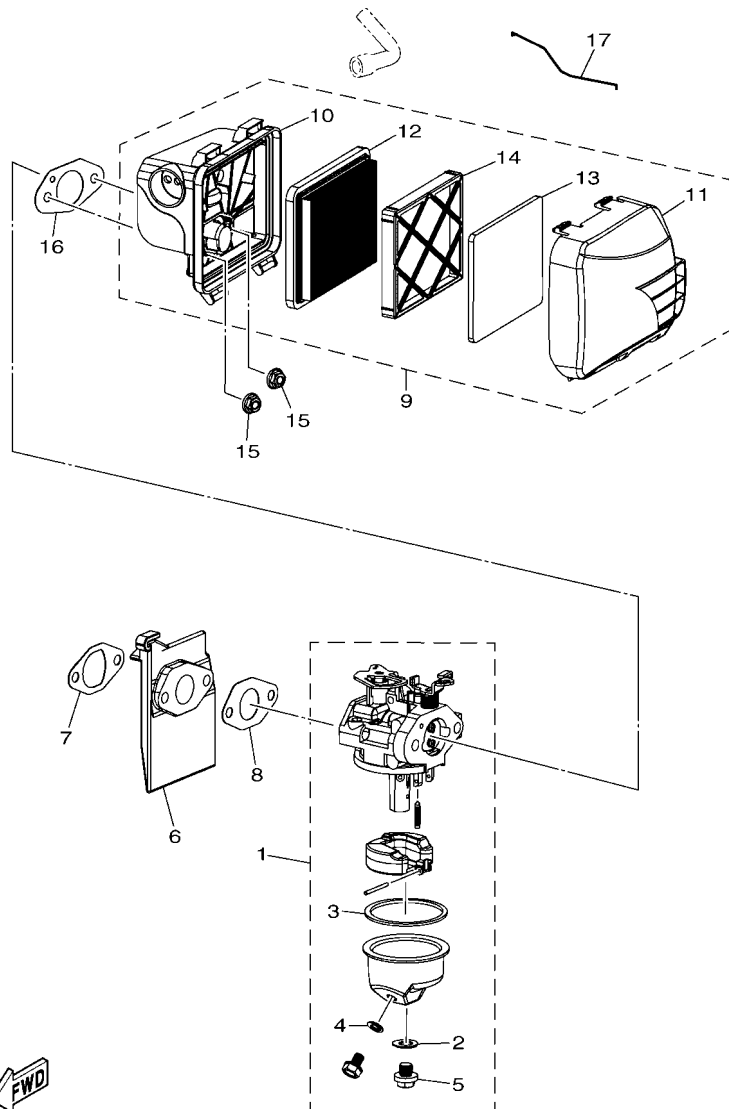


FIG. 3 GOVERNOR

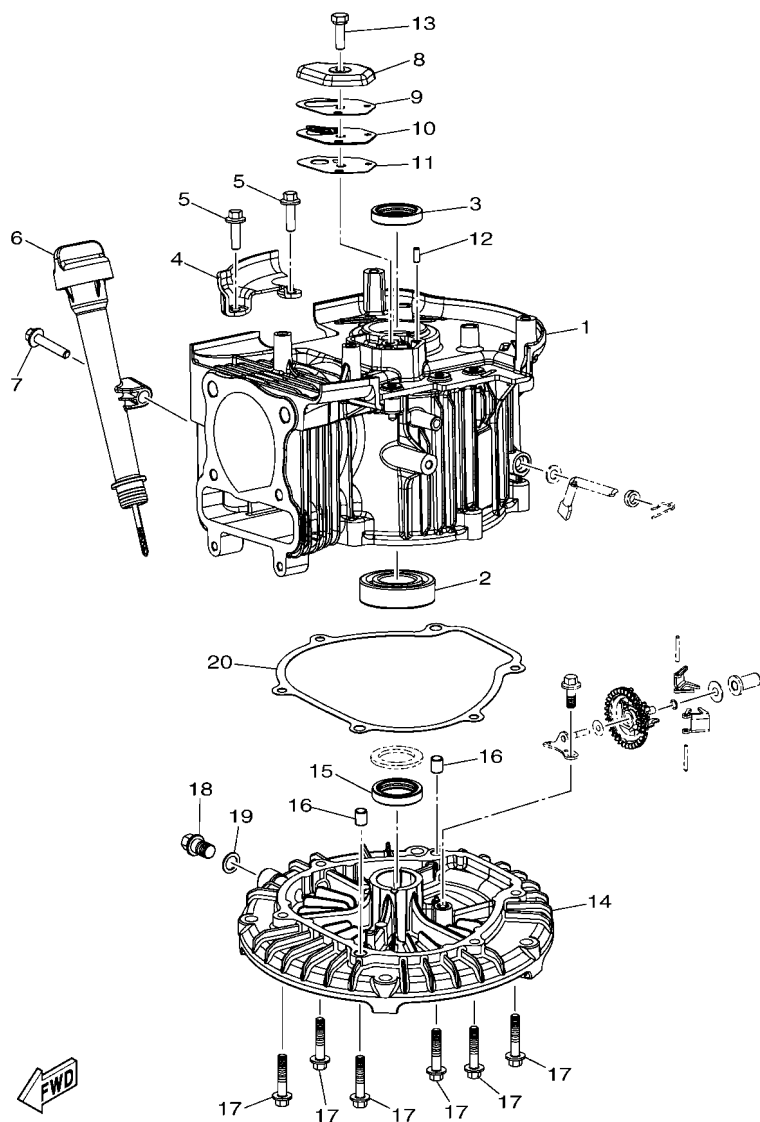
[illegible]



7JDB30P-T060

FIG. 6 INTAKE

REF. NO.	PART NO.	DESCRIPTION	7JDB					REMARKS
1	7JD-E4302-00	CARBURETOR ASSY 2	1					
2	7JD-R1167-10	.GASKET, DRAIN	1					
3	7JD-E4184-10	.GASKET, FLOAT CHAMBER	1					
4	7JD-R1167-20	.GASKET, DRAIN	1					
5	7JD-E3917-10	.BOLT, DRAIN	1					
6	7JD-E3596-00	JOINT, CARBURETOR 2	1					
7	7JD-E3557-00	GASKET	1					
8	7JD-E3567-00	GASKET	1					
9	7JD-E4410-00	AIR CLEANER ASSY.	1					
10	7JD-E4411-00	.CASE, AIR CLEANER 1	1					
11	7JD-E4412-00	.CAP, CLEANER CASE 1	1					
12	7JD-E4451-00	.ELEMENT, AIR CLEANER	1					
13	7JD-E4451-10	.ELEMENT, AIR CLEANER	1					
14	7JD-E445C-00	.HOLDER	1					
15	7JD-RA309-00	NUT	2					
16	7JD-E4416-00	GASKET, AIR CLEANER	1					
17	7JD-E4585-00	ROD, CHOKE	1					



7JDB30A-T080

FIG. 8 CRANKCASE

REF. NO.	PART NO.	DESCRIPTION	7JDB				REMARKS
1	7JD-E5111-00	CRANKCASE 1	1				
2	7JD-RAG02-00	BEARING	1				
3	7JD-RAE01-10	SEAL, OIL	1				
4	7JD-E4604-00	COVER, AIR 1	1				
5	7JD-RA102-40	BOLT, FLANGE	2				
6	7JD-E5362-00	PLUG, OIL LEVEL	1				
7	7JD-RA102-60	BOLT, FLANGE	1				
8	7JD-E1168-00	COVER, BREATHER	1				
9	7JD-E5374-00	GASKET, BREATHER	1				
10	7JD-E5346-00	BREATHER 1	1				
11	7JD-E5374-10	GASKET, BREATHER	1				
12	7JD-E5181-00	PIN, DOWEL	1				
13	7JD-RA102-50	BOLT, FLANGE	1				
14	7JD-E5411-00	COVER, CRANKCASE 1	1				
15	7JD-RAE01-00	SEAL, OIL	1				
16	7JD-E5181-10	PIN, DOWEL	2				
17	7JD-RA102-60	BOLT, FLANGE	6				
18	7JD-E5363-00	PLUG, OIL	1				
19	7JD-RA400-20	WASHER, PLAIN	1				
20	7JD-E5451-00	GASKET, CRANKCASE COVER 1	1				

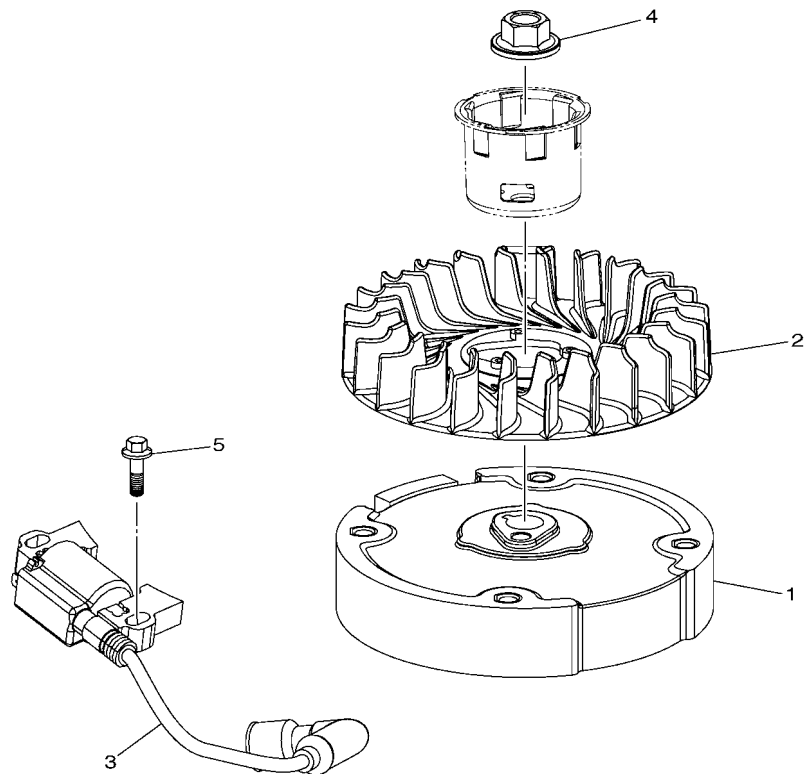


FIG. 10 ELECTRICAL

NUMERICAL INDEX

PART NO.	REF. NO.	PART NO.	REF. NO.	PART NO.	REF. NO.	PART NO.	REF. NO.	PART NO.	REF. NO.	PART NO.	REF. NO.
7JD-E1111-00	1 - 1	7JD-E445C-00	6 - 14	7JD-RA102-10	9 - 5						
7JD-E1168-00	8 - 8	7JD-E4585-00	6 - 17		10 - 5						
7JD-E1181-00	1 - 4	7JD-E4604-00	8 - 4	7JD-RA102-20	3 - 2						
7JD-E1191-00	1 - 9	7JD-E4613-00	7 - 5	7JD-RA102-30	4 - 4						
7JD-E1193-00	1 - 10	7JD-E4708-10	7 - 4	7JD-RA102-40	8 - 5						
7JD-E119C-00	1 - 8	7JD-E4710-00	7 - 1	7JD-RA102-50	8 - 13						
7JD-E1361-00	1 - 5	7JD-E4786-00	7 - 2	7JD-RA102-60	8 - 7						
7JD-E1362-00	1 - 6	7JD-E5111-00	8 - 1		8 - 17						
7JD-E1391-00	1 - 2	7JD-E5181-00	8 - 12	7JD-RA102-80	9 - 7						
7JD-E1392-00	1 - 3	7JD-E5181-10	8 - 16	7JD-RA124-00	5 - 8						
7JD-E1411-00	2 - 1	7JD-E5181-20	1 - 7	7JD-RA124-10	5 - 9						
7JD-E1456-00	4 - 13	7JD-E531A-00	1 - 11	7JD-RA204-10	5 - 2						
7JD-E1499-00	4 - 17	7JD-E5346-00	8 - 10	7JD-RA204-30	7 - 3						
7JD-E1555-00	10 - 4	7JD-E5362-00	8 - 6	7JD-RA309-00	3 - 10						
7JD-E1610-00	2 - 4	7JD-E5363-00	8 - 18		5 - 10						
7JD-E1631-00	2 - 3	7JD-E5374-00	8 - 9		6 - 15						
7JD-E1633-00	2 - 5	7JD-E5374-10	8 - 11	7JD-RA309-10	7 - 7						
7JD-E1634-00	2 - 6	7JD-E5411-00	8 - 14	7JD-RA400-00	2 - 7						
7JD-E1650-00	2 - 2	7JD-E5451-00	8 - 20	7JD-RA400-10	3 - 4						
7JD-E1815-00	4 - 9	7JD-E5710-00	5 - 3	7JD-RA400-20	8 - 19						
7JD-E1922-00	3 - 3	7JD-E5723-00	5 - 7	7JD-RA400-30	4 - 5						
7JD-E1924-00	3 - 8	7JD-E5741-00	5 - 6	7JD-RA905-00	9 - 11						
7JD-E1928-10	3 - 12	7JD-E5755-00	5 - 4	7JD-RA905-10	9 - 8						
7JD-E1970-00	3 - 1	7JD-E5781-00	5 - 5	7JD-RAB00-01	9 - 9						
7JD-E2111-00	4 - 6	7JD-E6146-00	4 - 16	7JD-RAB00-11	9 - 10						
7JD-E2117-00	4 - 8	7JD-E8226-00	3 - 11	7JD-RAB00-21	9 - 12						
7JD-E2119-00	4 - 18	7JD-F4110-00	9 - 1	7JD-RAD01-00	3 - 13						
7JD-E2121-00	4 - 7	7JD-F4167-00	9 - 3	7JD-RAE01-00	8 - 15						
7JD-E2146-00	4 - 12	7JD-F4500-10	9 - 6	7JD-RAE01-10	8 - 3						
7JD-E2150-00	4 - 10	7JD-F4514-00	9 - 4	7JD-RAE01-20	3 - 14						
7JD-E2160-00	4 - 11	7JD-F4610-00	9 - 2	7JD-RAG02-00	8 - 2						
7JD-E2170-00	4 - 1	7JD-H5530-11	10 - 3								
7JD-E2231-00	4 - 14	7JD-H5586-00	10 - 2								
7JD-E2629-20	11 - 1	7JD-H5650-00	10 - 1								
7JD-E262E-50	5 - 1	7JD-R1167-10	6 - 2								
7JD-E3557-00	6 - 7	7JD-R1167-20	6 - 4								
7JD-E3567-00	6 - 8	7JD-R1327-00	4 - 3								
7JD-E3596-00	6 - 6	7JD-R1342-50	3 - 6								
7JD-E3917-10	6 - 5	7JD-R1381-00	7 - 6								
7JD-E4139-00	3 - 5	7EB-R151A-00	11 - 2								
7JD-E4184-10	6 - 3	7JD-R151M-00	11 - 3								
7JD-E4302-00	6 - 1	7JD-R2441-00	4 - 15								
7JD-E4410-00	6 - 9	7JD-R2483-00	4 - 2								
7JD-E4411-00	6 - 10	7JD-R4041-00	3 - 9								
7JD-E4412-00	6 - 11	7JD-RA102-00	1 - 12								
7JD-E4416-00	6 - 16		3 - 7								
7JD-E4451-00	6 - 12		7 - 8								
7JD-E4451-10	6 - 13	7JD-RA102-10	1 - 13								