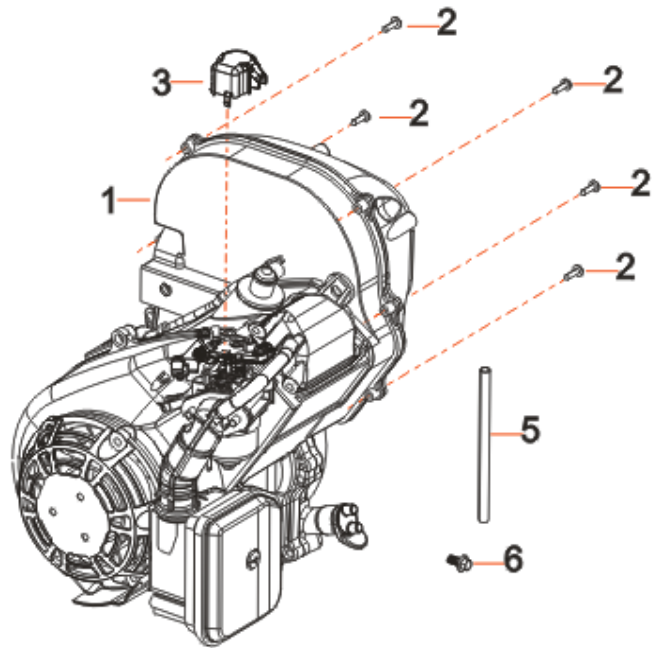


# ACCESS 2000 i

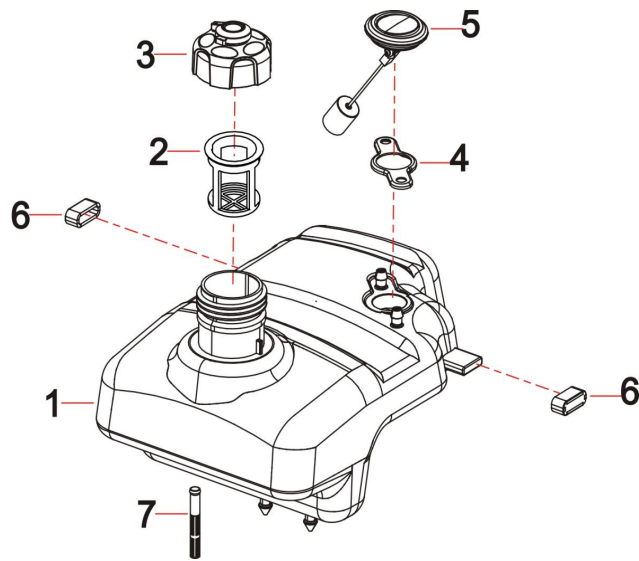
FIG.1 (E00)



REF.NO.	PART NO	DESCRIPTION	Q'TY
E00-1	R80-I	Engine	1
E00-2	90107-0516-01	SCREW, CROSS GROOVE PAN	5
E00-3	14411-Y2V0110-0000	CAP	1
E00-5	90686-Y2V0210-0000	TUBE, FUEL	1
E00-6	90001-0612-01	BOLT	1

# ACCESS 2000 i

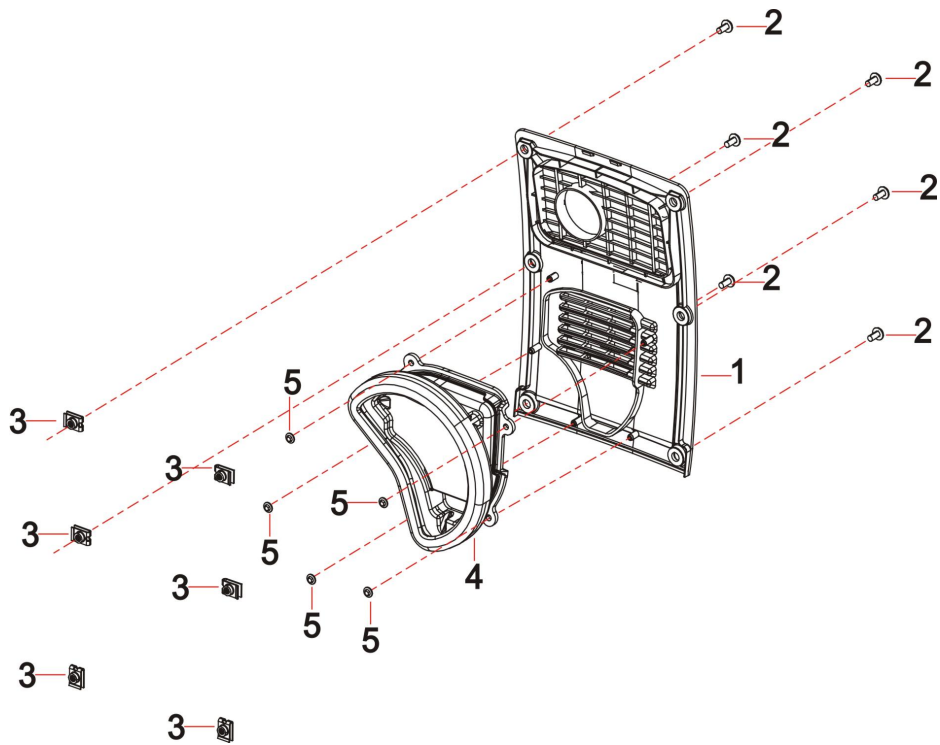
FIG.2 TANK, FUEL (F01)



REF.NO.	PART NO	DESCRIPTION	Q'TY
2-1	16620-Y2V0210-Q200	TANK, FUEL	1
2-2	16652-Y2V0110-0000	FUEL FILTER	1
2-3	16730-Y2V0510-Q200	COVER, FUEL TANK	1
2-4	11513-Y2V0110-0000	CLAMP, OIL SEAL	1
2-5	37200-Y1Y0110-0000	FUEL GAUGE	1
2-6	90683-Y2V0110-0000	BUSH	2
2-7	16514-Y2V0110-0000	ELEMENT, STRAINER	1

# ACCESS 2000 i

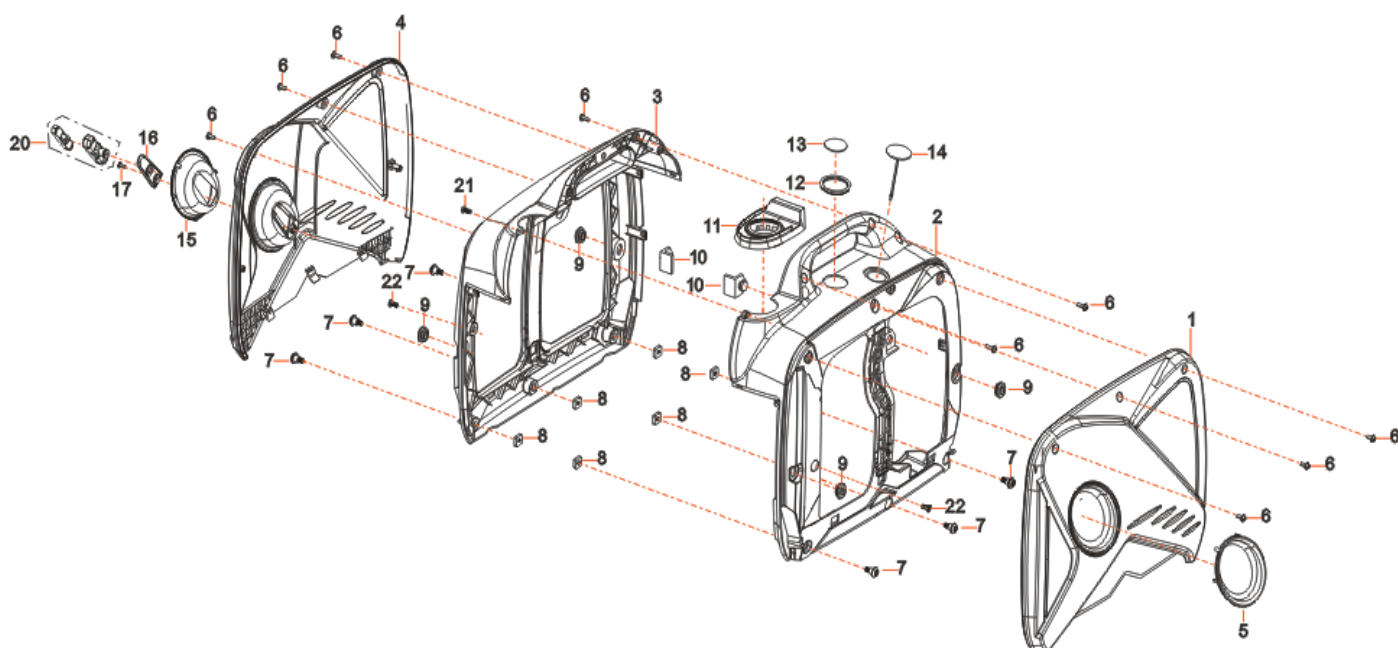
FIG.3 (F61)



REF.NO.	PART NO	DESCRIPTION	Q'TY
3-1	18002-Y2V0210-Q200	COVER, MUFFLER SIDE	1
3-2	90255-0512-53	Screw and washer	6
3-3	17199-Y2V0110-0000	Nut	6
3-4	53202-Y2V0110-0000	CUSHION, JOINT RUBBER	1
3-5	37073-Y2V0110-0000	CLIP, SPRING	5

# ACCESS 2000 i

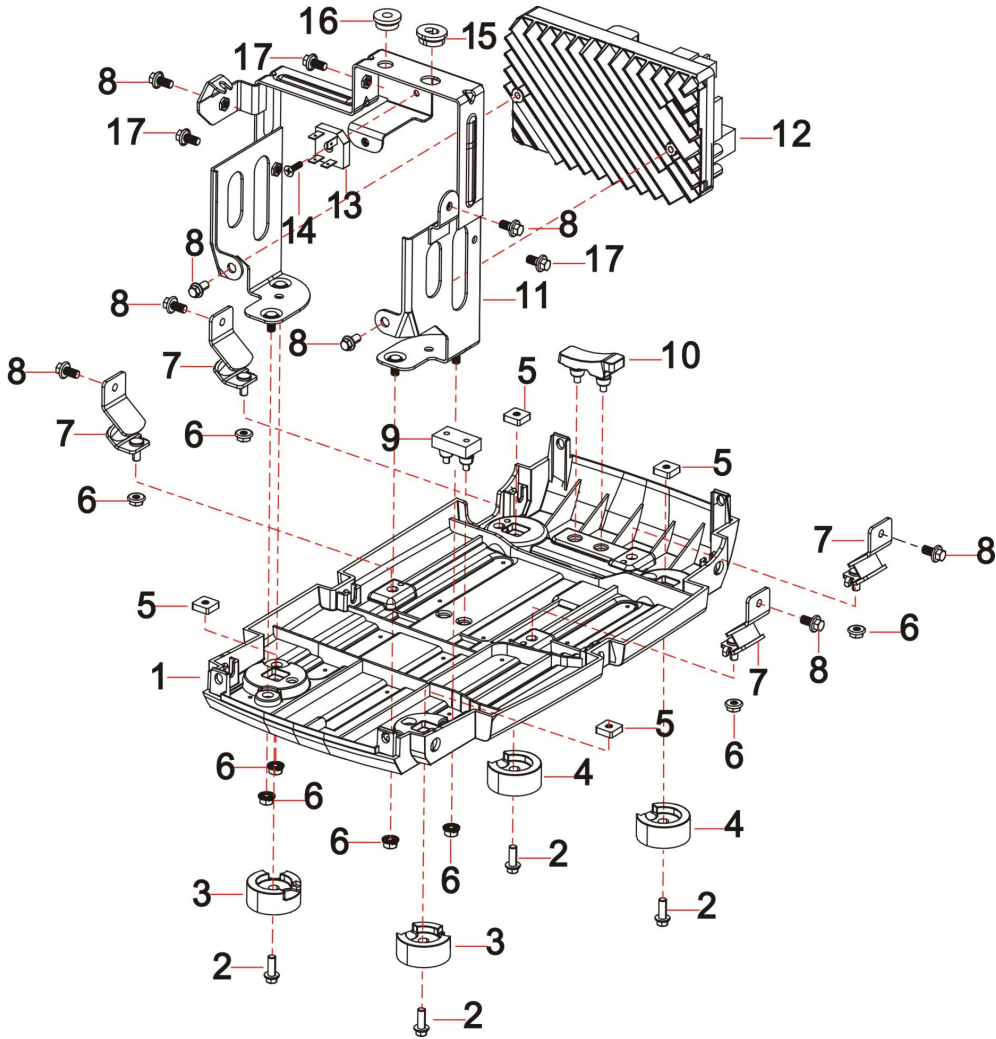
FIG.4 (F61)



REF.NO.	PART NO	DESCRIPTION	Q'TY
4-1	80096-Y2V0210-QK00	plate, right	1
4-2	80095-Y2V0210-Q200	cover, right	1
4-3	<b>80091-Y2V0220-Q200</b>	cover, left	1
4-4	80092-Y2V0210-QK00	plate, left	1
4-5	80097-Y2V0110-0000	decoration plate, right	1
4-6	90255-0516-51	scrwe and washer	9
4-7	90208-Y2V0110-0000	bolt	6
4-8	90326-Y2V0110-0000	nut	6
4-9	<b>16601-Y2V0210-0000</b>	SLEEVE, FUEL TANK RUBBER	4
4-10	50033-Y2V0110-0000	rubber	2
4-11	16641-Y2V0110-0000	SLEEVE, FILLING OIL HOLE RUBBER	1
4-12	30431-Y2V0310-0000	JACKET, RUBBER	1
4-13	37205-Y2V0210-0000	OPENING, OIL LEVERLER VIEW	1
4-14	30431-Y2V0110-0000	JACKET, RUBBER	1
4-15	80093-Y2V0110-0000	decoration plate, left	1
4-16	28004-Y2V0110-0000	GUIDE , STARTING ROPE	1
4-17	90255-0516-53	scrwe and washer	1
4-20	28210-Y2V0110-0000	HANDLE, RECOIL STRATER CABLE	1
4-21	90129-0416-01	screw	1
4-22	90007-0612-A1	bolt	2

# ACCESS 2000 i

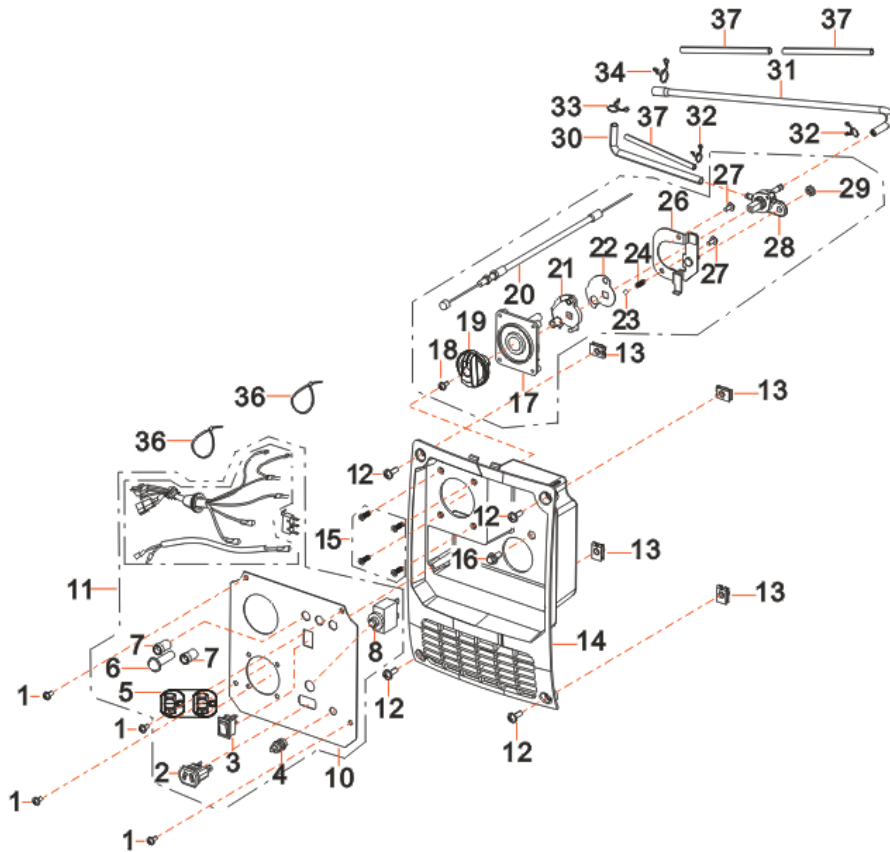
FIG.5 (F61)



REF.NO.	PART NO	DESCRIPTION	Q'TY
5-1	51143-Y2V0220-Q200	PLATE, BOTTOM	1
5-2	90001-0614-01	BOLT	4
5-3	51014-Y2V0140-0000	SEAT,FRAME	2
5-4	51014-Y2V0250-0000	SEAT,FRAME	2
5-5	90326-Y2V0110-0000	NUT	4
5-6	90305-0600-31	NUT	8
5-7	51005-Y2V0110-0000	CUSHION, ENGINE FRAME	4
5-8	90001-0612-01	BOLT	8
5-9	50035-Y2V0210-0000	BRACKET, CUSHION RUBBER	1
5-10	50035-Y2V0110-0000	BRACKET, CUSHION RUBBER	1
5-11	30081-Y2V0120-H700	fixing bracket	1
5-12	30043-Y5V0220-0000	INVERTOR	1
5-13	35621-Y2V0110-0000	RECTIFIER BRIDGE	1
5-14	90103-0416-51	SCREW	1
5-15	16601-Y2V0210-0000	SLEEVE, FUEL TANK RUBBER	1
5-16	16601-Y2V0110-0000	SLEEVE, FUEL TANK RUBBER	1
5-17	90001-0612-01	BOLT	3

# ACCESS 2000 i

**FIG.6 (F62)**



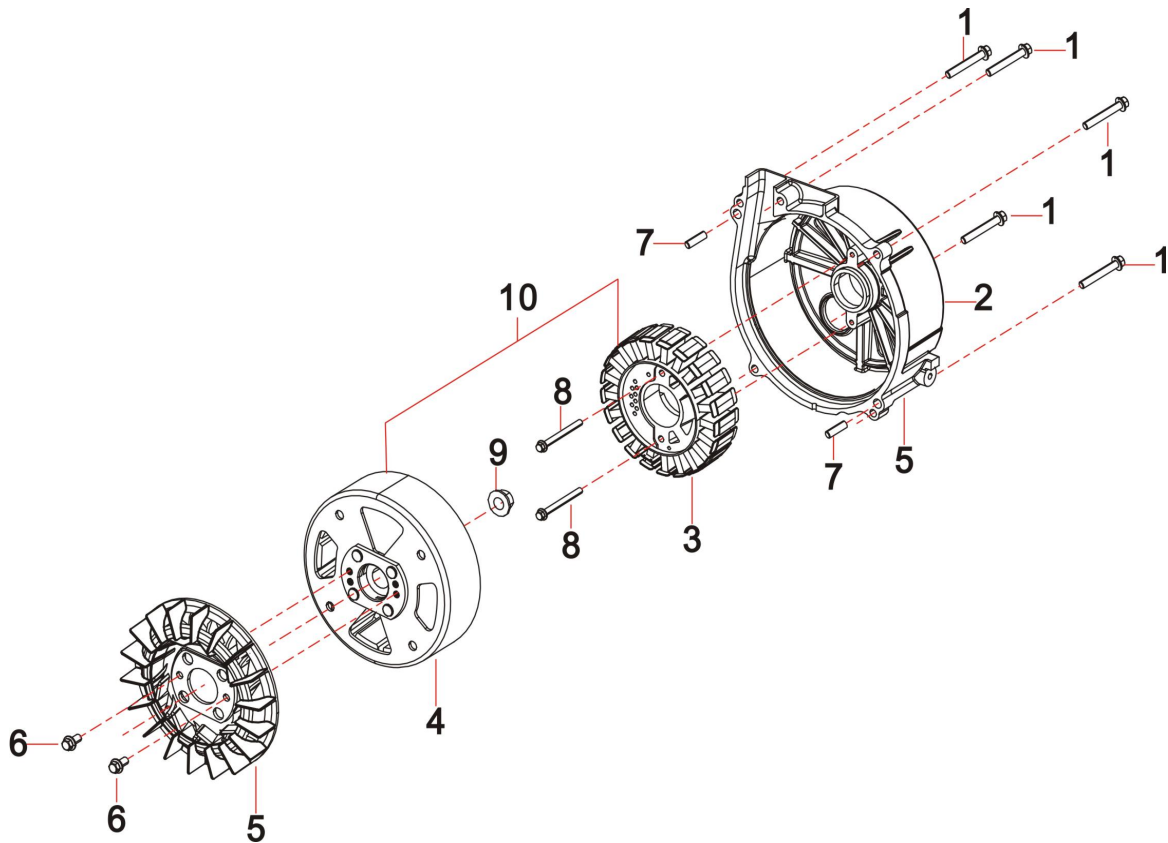
REF.NO.	PART NO	DESCRIPTION	Q'TY
6-1	90107-0416-03	SCREW	4
6-2	35619-Y2V0110-0000	SOCKET SUBASSEMBLY, D.C	1
6-3	35540-Y2V0110-0000	idle speed switch	1
6-4	35629-Y2V0110-0000	GROUNDING TERMINAL	1
6-5	35614-Y220110-0000	120 VOLT DUPLEX RECEPTACLE	1
6-6	90803-Y2V0110-0000	lamp	1
6-7	90803-Y2V0210-0000	lamp	2
6-8	31234-Y020110-0000	CIRCUIT BREAKER 20 AMP 1 POLE	1
6-10	35650-Y2V0110-0000	PANEL, CONTROL	1
6-11	35610-Y5V0140-H300	PANEL, CONTROL, ASSY.	1
6-12	90255-0512-53	screw and bolt	4
6-13	17199-Y2V0110-0000	NUT	4
6-14	35680-Y2V0230-Q200	SEAT, PANEL	1
6-15	90129-0416-01	SCREW	4
6-16	90001-0612-01	BOLT	1
6-17	35021-Y2V0120-Q200	control box	1
6-18	90103-0412-51	screw	1
6-19	35643-Y2V0110-Q200	KNOB	1
6-20	16080-Y2V0110-0000	HANDLE SUBASSEMBLY, CHOKE	1
6-21	94111-Y2V0120-Q200	Plate	1

## ACCESS 2000 i

6-22	16144-Y2V0110-0000	BLOCK, CHOKE CABLE STOPPER	1
6-23	90543-0500-00	BALL, STEEL	1
6-24	16527-Y2V0110-0000	SPRING, STOPPER ADJUSTING	1
6-26	50132-Y2V0110-0000	BRACKET, FUEL COCK	1
6-27	90129-0416-01	screw	2
6-28	16750-Y2V0130-0000	COCK ASSY, FUEL	1
6-29	90305-0600-31	NUT	1
6-30	90686-Y2V0410-0000	TUBE, FUEL	1
6-31	90686-Y2V0510-0000	TUBE, FUEL	1
6-32	90740-Z010210-0000	COLLAR	2
6-33	90740-Z450110-0000	COLLAR	1
6-34	90685-Z030510-0000	COLLAR	1
6-36	90727-Y020110-0000	BAND	2
6-37	30431-Y020110-0000	JACKET, RUBBER	3

# ACCESS 2000 i

FIG.7 ROTOR/STATOR (F63)

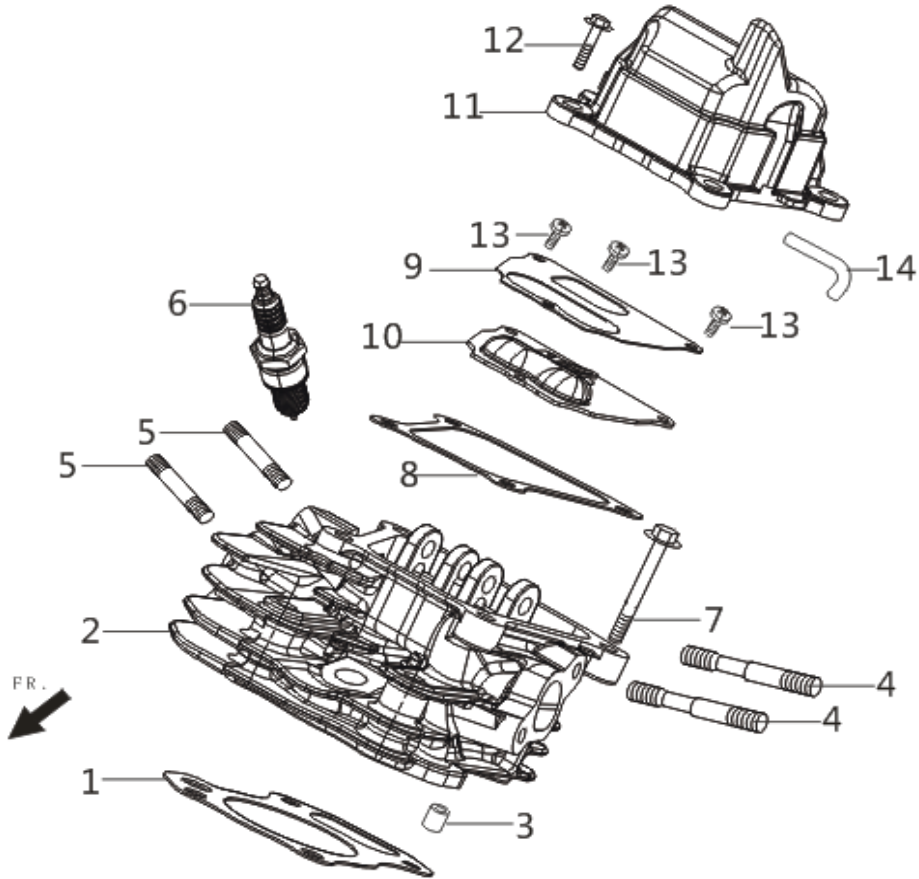


REF.NO.	PART NO	DESCRIPTION	Q'TY
F63-1	90001-0630-01	BOLT	5
F63-2	30024-Y2V0120-0000	SHROUD, MOTOR	1
F63-3	30120-Y2V0120-0000	STATOR COMP.	1
F63-4	30110-Y2V0130-0000	ROTOR COMP	1
F63-5	19352-Y2V0110-Q200	IMPELLER	1
F63-6	90001-0610-01	BOLT	2
F63-7	90502-0814-00	PIN	2
F63-8	90001-0535-01	BOLT	2
F63-9	90306-1200-31	NUT	1
F63-10	30100-Y5V0120-0000	MOTOR ASSY.	1



# ACCESS 2000 i

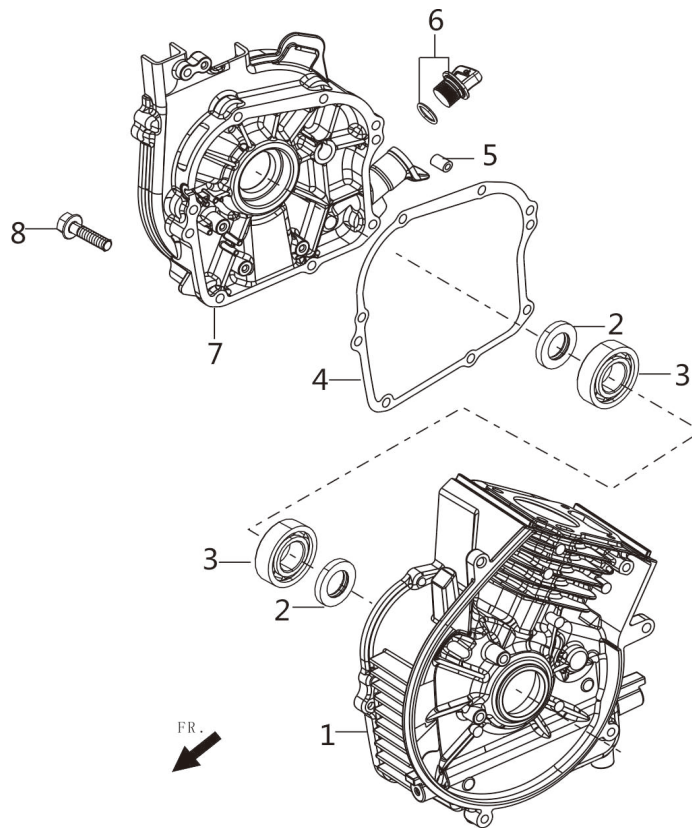
**FIG.8 HEAD SUBASSEMBLY, CYLINDER / PLUG, SPARK (E04)**



REF.NO.	PART NO	DESCRIPTION	Q'TY
E04-1	12131-Z800110-0000	GASKET, CYLINDER HEAD	1
E04-2	12140-Z800110-0000	HEAD SUBASSEMBLY, CYLINDER	1
E04-3	90502-0812-00	PIN	2
E04-4	90204-Z800110-0000	STUD	2
E04-5	90204-Z800210-0000	STUD	2
E04-6	30010-Z350210-0000	PLUG, SPARK	1
E04-7	12003-Z800110-0000	BOLT, CYLINDER HEAD	4
E04-8	12004-Z800120-0000	GASKET, CYLINDER HEAD COVER	1
E04-9	11320-Z800110-0000	breath piece	1
E04-10	11332-Z800110-0000	GASKET, BREATH GROOVE	1
E04-11	12410-Z800110-0000	COVER SUBASSEMBLY, CYLINDER H	1
E04-12	90007-0616-A1	BOLT	4
E04-13	90103-0308-51	BOLT	3
E04-14	17004-Z800110-0000	TUBE, BREATHER	1

# ACCESS 2000 i

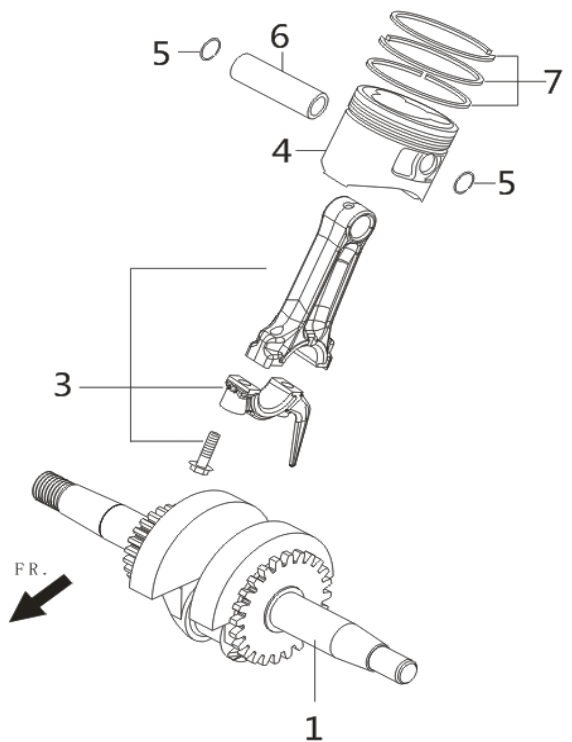
**FIG.9 CRANKCASE/COVER SUBASSEMBLY, CRANKCASE**



REF.NO.	PART NO	DESCRIPTION	Q'TY
E1-1	11310-Z800110-0000	CRANKCASE SUBASSEMBLY.	1
E1-2	90682-Z800110-0000	OIL-SEAL	2
E1-3	90547-0204-CL	BEARING	2
E1-4	11001-Z800110-0000	GASKET, CRANKCASE	1
E1-5	90502-0812-00	PIN	2
E1-6	15030-Z010120-Q500	DIPSTICK SUBASSEMBLY, OIL	1
E1-7	11411-Z800110-0000	COVER, CRANKCASE	1
E1-8	90007-0620-A1	BOLT	7

# ACCESS 2000 i

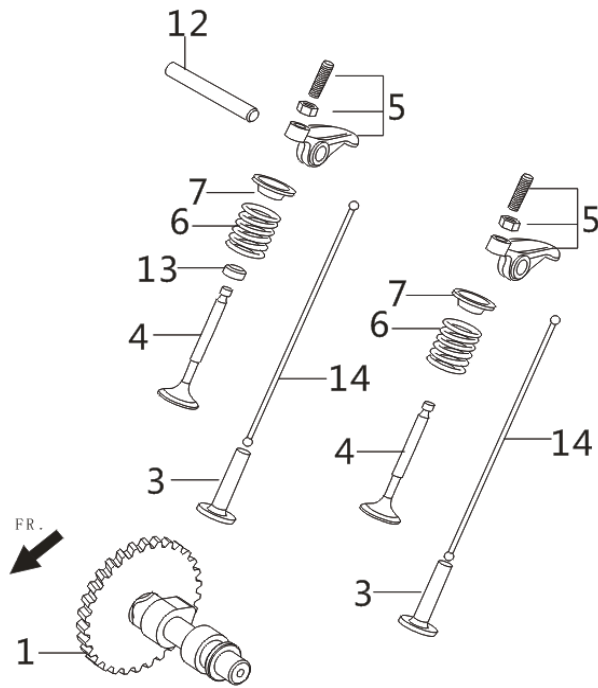
**FIG.10 RING SET,OIL / ROD,CRANKSHAFT CONNETING (E03)**



REF.NO.	PART NO	DESCRIPTION	Q'TY
E03-1	13300-Z800110-0000	CRANKSHAFT ASSY.	1
E03-3	13010-Z800110-0000	ROD, CONNECTING	1
E03-4	13111-Z800110-0000	PISTON	1
E03-5	13122-Z800120-0000	CLIP, PISTON PIN	2
E03-6	13121-Z800120-0000	PIN, PISTON	1
E03-7	13200-Z800110-0000	RING ASSY, PISTON	1

# ACCESS 2000 i

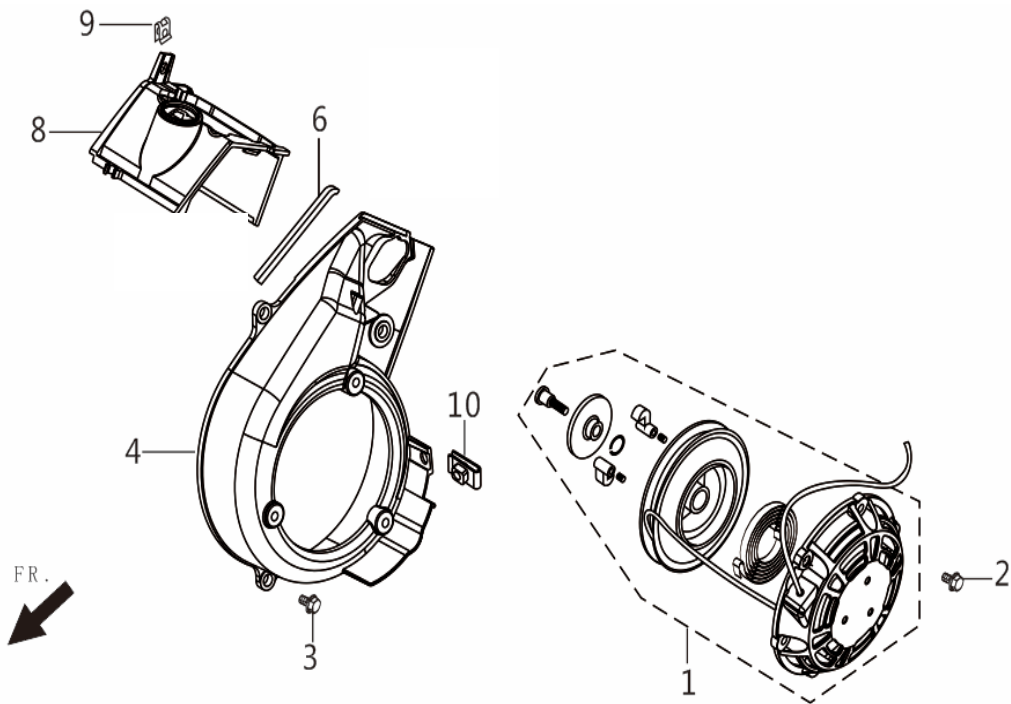
**FIG.11 TRAIN,VALVE / CAMSHAFT SUBASSEMBLY (E05)**



REF.NO.	PART NO	DESCRIPTION	Q'TY
E05-1	14200-Z800110-0000	CAMSHAFT ASSY.	1
E05-3	14081-Z800110-0000	TAPPET, VALVE	2
E05-4	12110-Z800110-0000	valve	1
E05-5	14310-Z800110-0000	ROCKER SUBASSEMBLY, VALVE	2
E05-6	12103-Z800110-0000	SPRING, VALVE	2
E05-7	12112-Z800110-0000	SEAT, VALVE SPRING	2
E05-12	14330-Z800110-0000	SHAFT, VALVE ROCKER	1
E05-13	12101-Z800110-0000	GUIDE, SEAL	1
E05-14	14070-Z800110-0000	LIFTER, VALVE	2

# ACCESS 2000 i

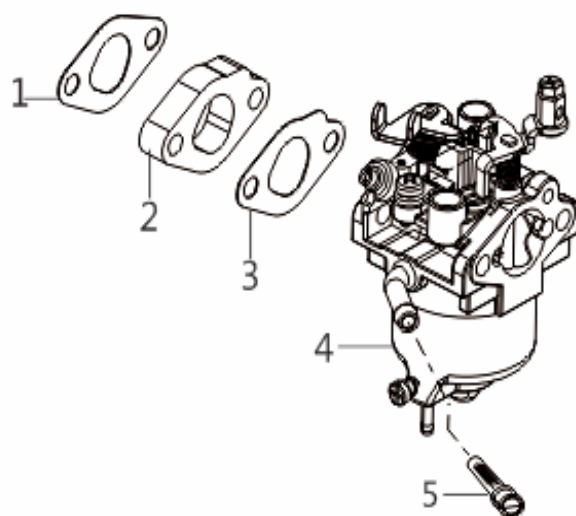
**FIG.12 STARTER,RECOIL (E08)**



REF.NO.	PART NO	DESCRIPTION	Q'TY
E08-1	28200-Z800110-Q200	STARTER ASSY, RECOIL	1
E08-2	90001-0612-01	BOLT	3
E08-3	90007-0616-A1	BOLT	3
E08-4	28110-Z800110-Q200	SHROUD	1
E08-6	19081-Z800110-0000	STRIP, SHROUD SEAL	1
E08-8	12014-Z800110-0000	air guide, cylinder head	1
E08-9	90804-Z800110-0000	clip	1
E08-10	17199-Y2V0110-0000	NUT	1

# ACCESS 2000 i

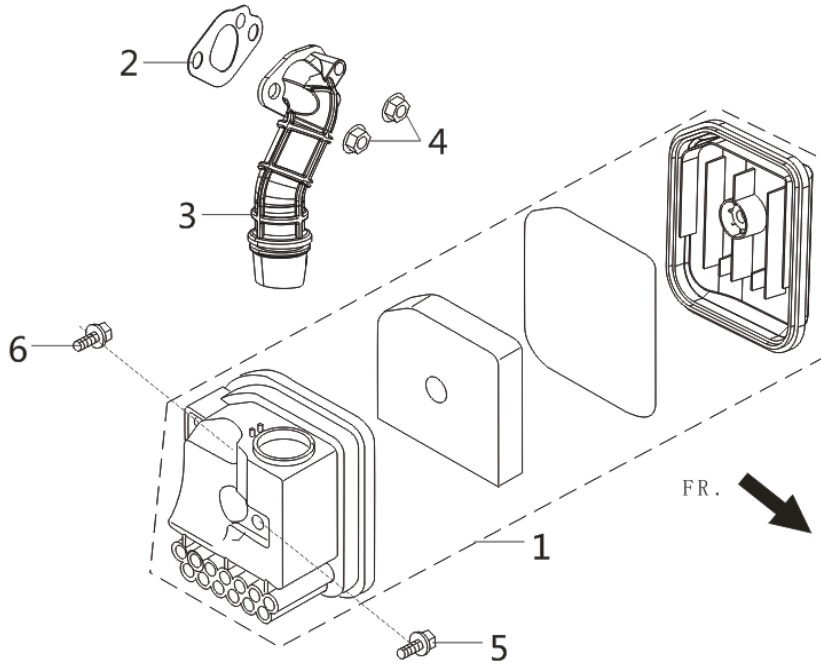
**FIG.13 CARBURETOR ASSY. (E11)**



REF.NO.	PART NO	DESCRIPTION	Q'TY
E11-1	16001-Z800110-0000	GASKET, CARBURETOR	1
E11-2	16003-Z800110-0000	PLATE, CARBURETOR INSULATOR	1
E11-3	16002-Z800110-0000	GASKET, CARBURETOR INSULATOR	1
E11-4	16100-Z800110-0000	CARBURETOR ASSY.	1
E11-5	16652-Z800110-0000	STRAINER, FUEL	1

# ACCESS 2000 i

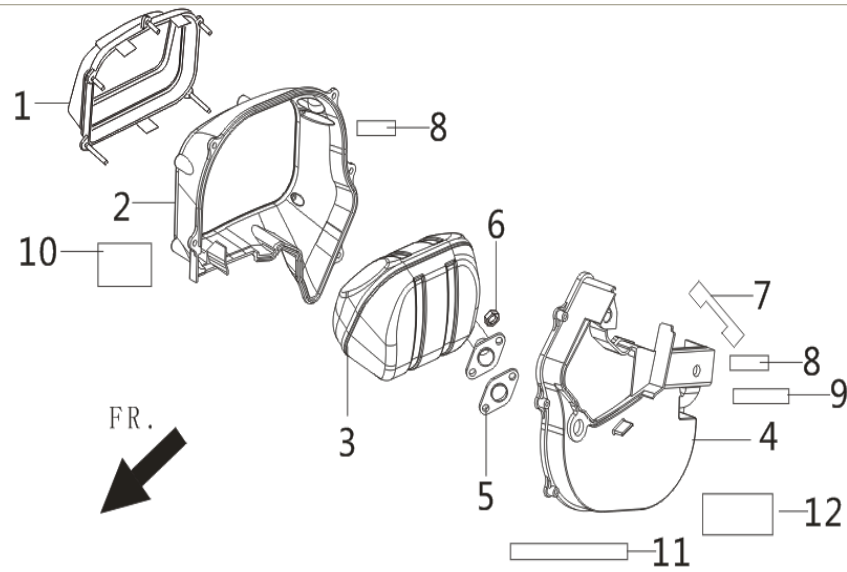
**FIG.14 CLEANER, AIR (F02)**



REF.NO.	PART NO	DESCRIPTION	Q'TY
F02-1	17100-Z800110-0000	CLEANER, AIR	1
F02-2	17001-Z800110-0000	GASKET, AIR CLEANER	1
F02-3	17110-Z800110-0000	DUCT, AIR CLEANER INTAKE	1
F02-4	90305-0600-31	NUT	2
F02-5	90007-0520-A1	bolt	1
F02-6	90007-0620-A1	bolt	1

# ACCESS 2000 i

**FIG.15 MUFFLER ASSY. (F04)**

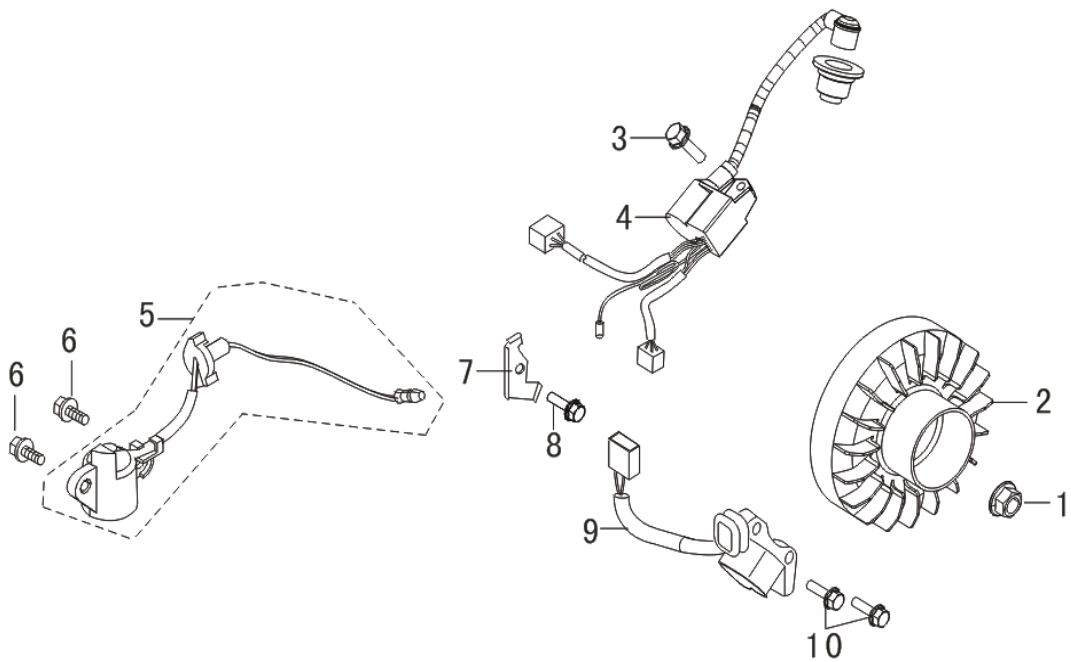


REF.NO.	PART NO	DESCRIPTION	Q'TY
F04-1	18002-Z800110-0000	COVER, MUFFLER SIDE	1
F04-2	18109-Z800110-0000	SHROUD, MUFFLER	1
F04-3	18160-Z800110-0000	MUFFLER BODY	1
F04-4	18013HZ800110-0000	MUFFLER SHIELD	1
F04-5	18001-Z800110-0000	GASKET, EXHAUST OUTLET	1
F04-6	90303-0600-31	NUT	2
F04-7	18019-Z800120-0000	GASKET, muffler cover	1
F04-8	18019-Z800230-0000	GASKET, muffler cover	2
F04-9	18019-Z800330-0000	GASKET, muffler cover	1
F04-10	90739-Z800320-0000	hotness-proof paper	1
F04-11	90739-Z800220-0000	hotness-proof paper	1
F04-12	90739-Z800120-0000	hotness-proof paper	1



# ACCESS 2000 i

**FIG.16 FLYWHEEL / IMPELLER / STARTER PULLEY / IGNITION COIL (E15)**



REF.NO.	PART NO	DESCRIPTION	Q'TY
E15-1	13501-Z510110-0000	NUT, FLYWHEEL	1
E15-2	13510-Z800110-0000	FLYWHEEL SUBASSEMBLY	1
E15-3	90007-0620-A1	BOLT	1
E15-4	30700-Z800110-0000	IGNITOR	1
E15-5	37060-Z800110-0000	SENSOR, ENGINE OIL	1
E15-6	90007-0612-A1	BOLT	2
E15-7	54066-Z800110-0000	CLAMP	1
E15-8	90007-0612-A1	BOLT	1
E15-9	30400-Z800110-0000	COIL, IGNITION	1
E15-10	90007-0620-A1	BOLT	2