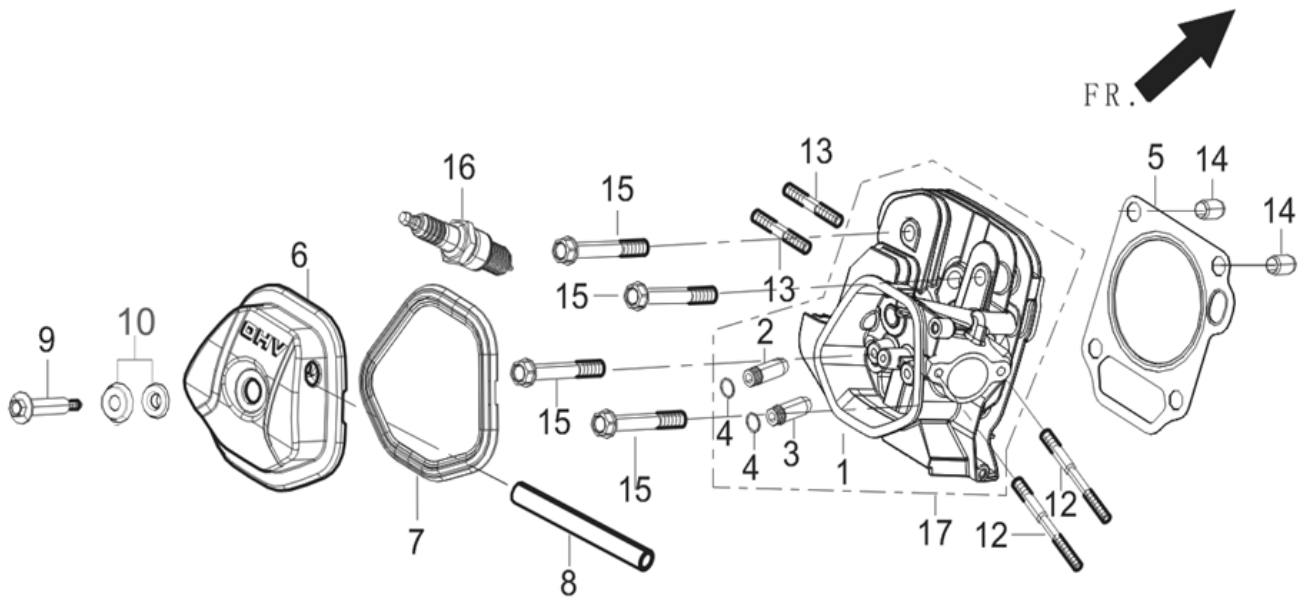


ACCESS 5500 XL - Stage V - GENERATOR

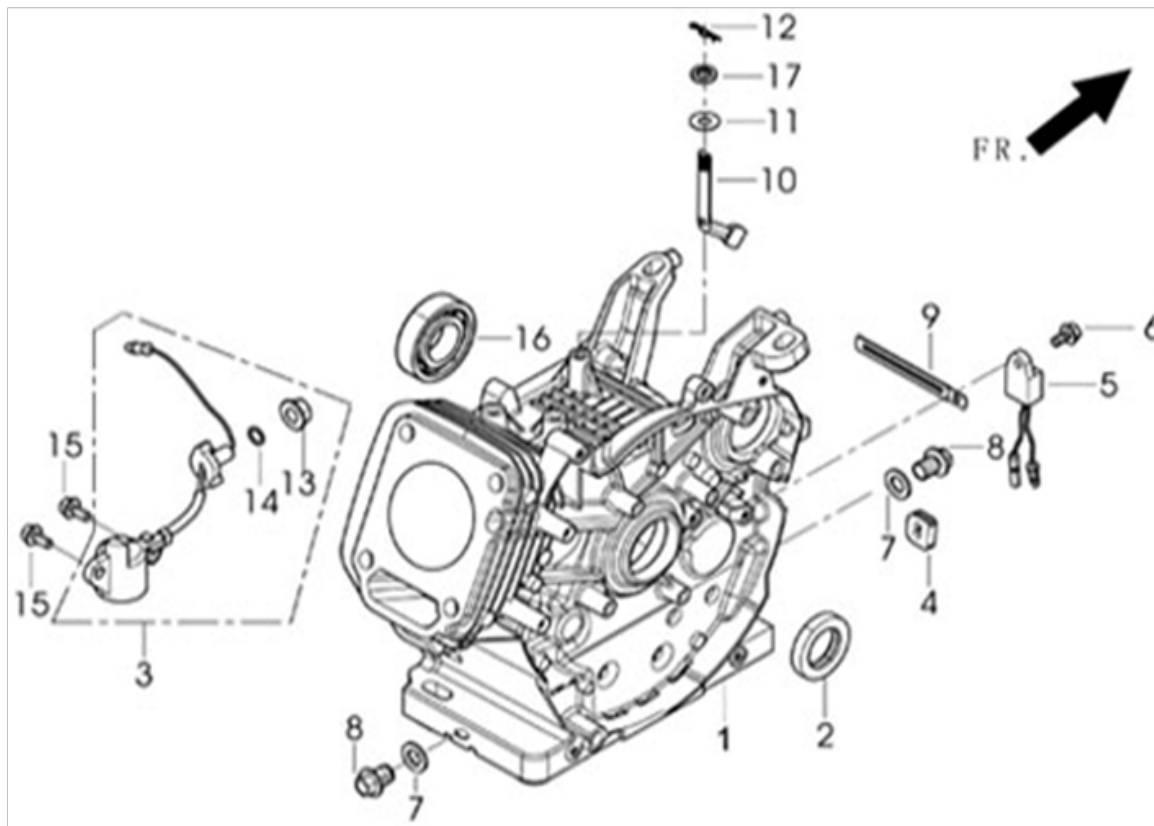
FIG.1 CYLINDER HEAD , CYLINDER COVER ASSY (E04)



REF.NO.	PART NO	DESCRIPTION	Q'TY
E04-5	12131-Z100110-00A0	GASKET, CYLINDER HEAD	1
E04-6	12410-Z080410-00A0	COVER SUBASSEMBLY, CYLINDER HEAD	1
E04-7	12004-Z080110-00A0	GASKET, CYLINDER HEAD COVER	1
E04-8	17004-Z080510-00A0	TUBE, BREATHER	1
E04-9	12032-Z080110-01A0	BOLT, CYLINDER HEAD	1
E04-10	12034-Z080110-00A9	GASKETS	1
E04-12	90204-Z100510-00A0	BOLT	2
E04-13	90203-Z010110-00A0	BOLT	2
E04-14	90502-1220-00A0	PIN	2
E04-15	12003-Z080110-00A0	BOLT, CYLINDER HEAD	4
E04-16	30010-Z010110-00A0	PLUG, SPARK	1
E04-17	12140-Z100410-0BA0	HEAD SUBASSEMBLY, CYLINDER	1

ACCESS 5500 XL - Stage V - GENERATOR

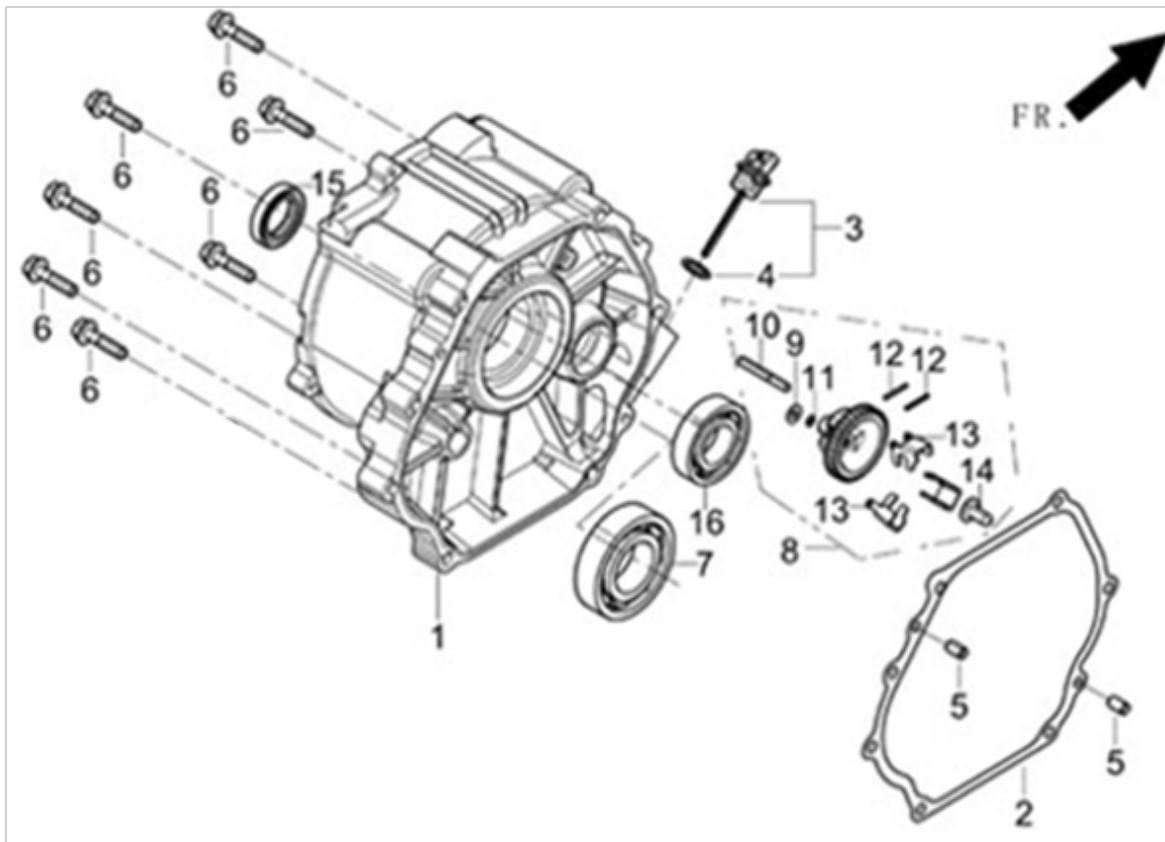
FIG.2 CRANKCASE (E17)



REF.NO.	PART NO	DESCRIPTION	Q'TY
E17-1	11310-Z101310-0BA0	CRANKCASE SUBASSEMBLY.	1
E17-2	90682-Z310110-00A0	SEAL, OIL	1
E17-3	37060-Z080120-00A0	SENSOR, ENGINE OIL	1
E17-4	28101-Z080110-00A0	PLUG, RUBBER	1
E17-5	37050-Z010210-00A0	PROTECTOR, OIL	1
E17-6	90001-0612-01A0	BOLT	1
E17-7	90412-Z080110-00A0	WASHER, FLAT	2
E17-8	11007-Z080110-00A0	BOLT, DRAIN PLUG	2
E17-9	90684-Z030120-00A0	CLIP	1
E17-10	16061-Z100110-00A0	ARM, GOVERNOR	1
E17-11	90412-Z080210-00A0	WASHER, FLAT	1
E17-12	90501-Z010110-00A0	PIN	1
E17-13	90305-Z010210-01A0	NUT	1
E17-15	90001-0616-01A0	BOLT	2
E17-16	90548-0202-00A0	BEARING, DEEP GROOVE BALL	1
E17-17	90682-Z100210-00A0	SEAL, OIL	1

ACCESS 5500 XL - Stage V - GENERATOR

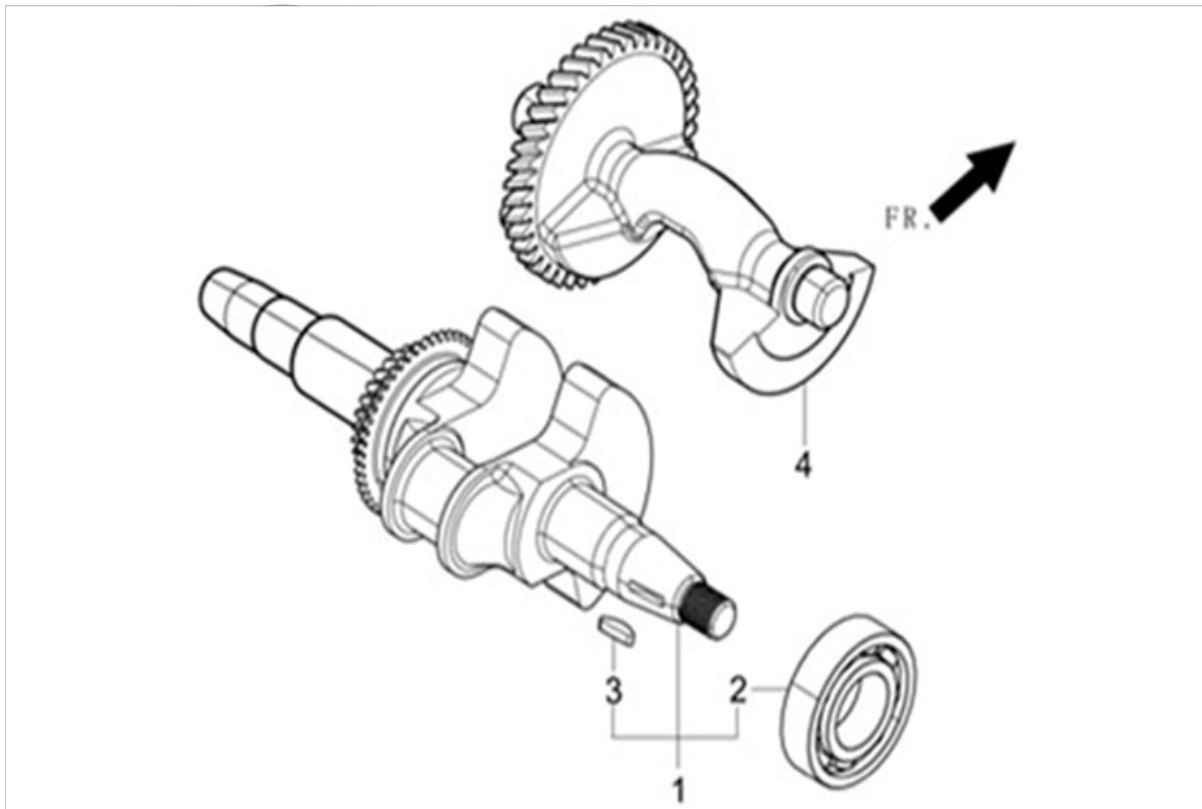
FIG.3 COVER, CRANKCASE (E01)



REF.NO.	PART NO	DESCRIPTION	Q'TY
E01-1	11411-Z101610-0BA0	COVER, CRANKCASE	1
E01-2	11001-Z100120-00A0	GASKET, CRANKCASE	1
E01-3	15010-Z080330-Q5A0	DIPSTICK SUBASSEMBLY, OIL	1
E01-5	90502-0812-00A0	PIN	2
E01-6	90001-0840-01A0	BOLT	7
E01-7	90547-0207-00A0	BEARING, DEEP GROOVE BALL	1
E01-8	16400-Z100110-00A0	GEAR ASSY, GOVERNOR	1
E01-15	90682-Z310110-00A0	OIL SEAL	1
E01-16	90548-0202-00A0	BEARING, DEEP GROOVE BALL	1

ACCESS 5500 XL - Stage V - GENERATOR

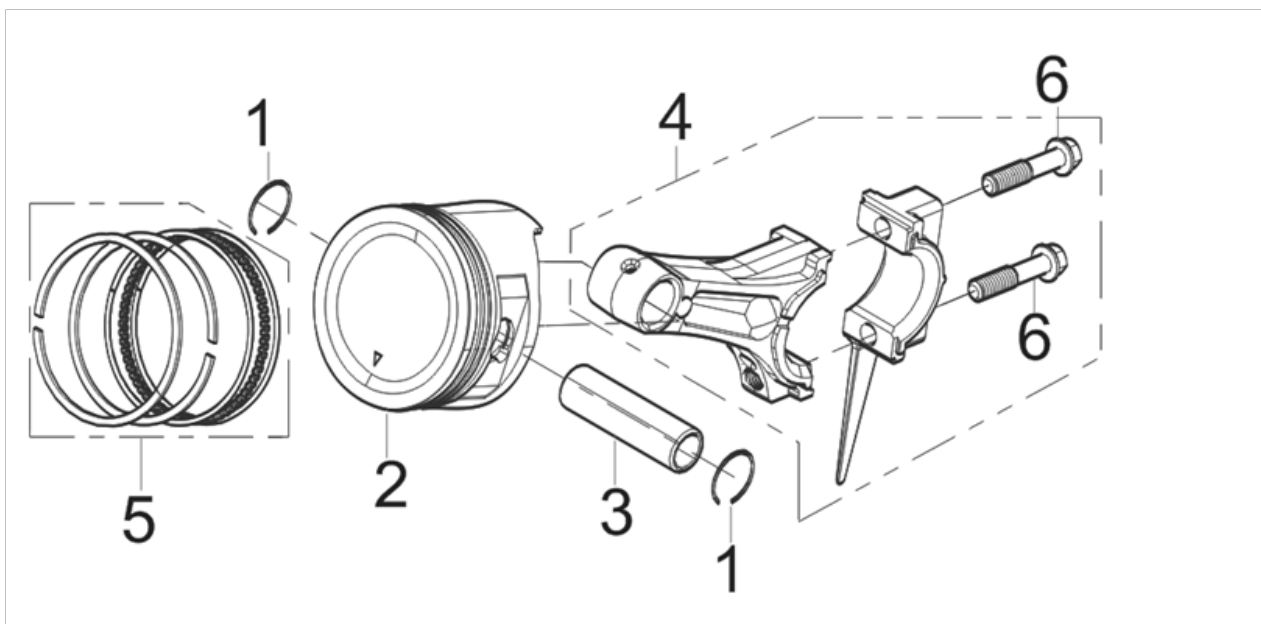
FIG.4 CRANKSHAFT ASSY.(E03)



REF.NO.	PART NO	DESCRIPTION	Q'TY
E03-1	13300-Z100110-RBA0	CRANKSHAFT ASSY.	1
E03-4	13401-Z100110-00A0	BALANCING SHAFT	1

ACCESS 5500 XL - Stage V - GENERATOR

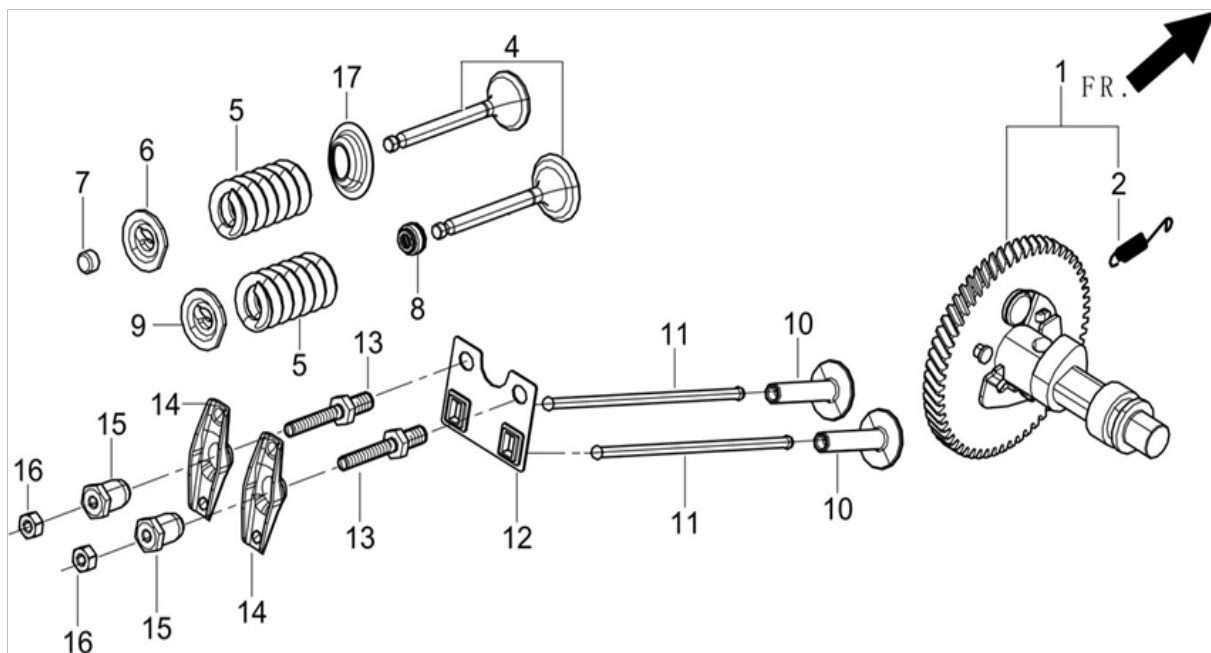
FIG.5 PISTON/CONNECTING ROD (E03)



REF.NO.	PART NO	DESCRIPTION	Q'TY
E03-1	13122-Z100110-00A0	CLIP, PISTON PIN	2
E03-2	13111-Z100410-00A9	PISTON	1
E03-3	13121-Z100110-00A0	PIN, PISTON	1
E03-4	13010-Z100120-00A0	ROD, CONNECTING	1
E03-5	13200-Z100110-00A9	PISTON RINGS SET	1

ACCESS 5500 XL - Stage V - GENERATOR

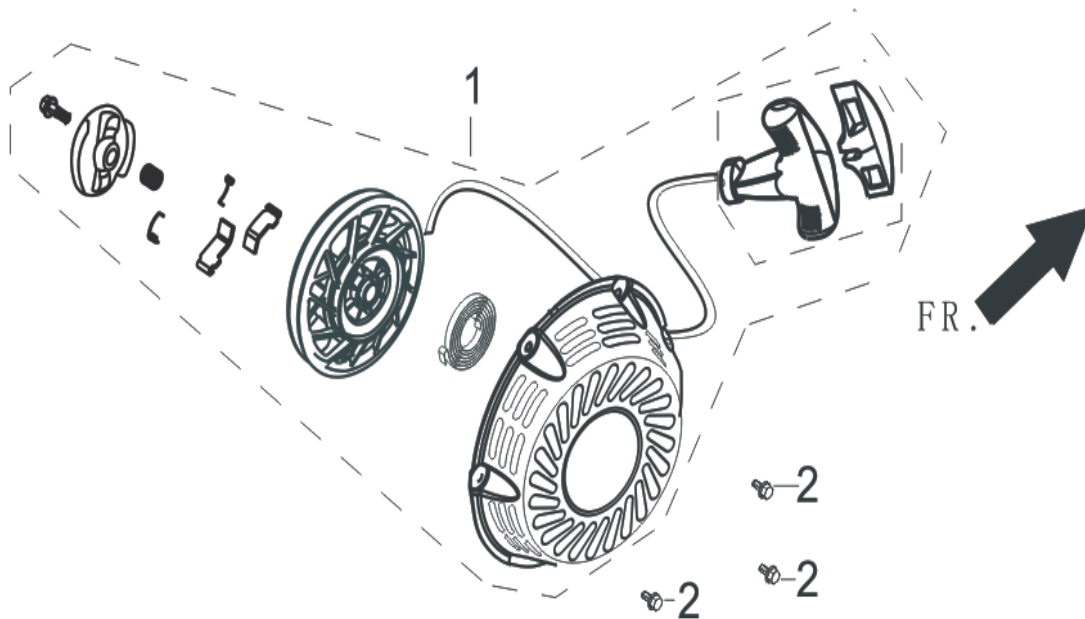
FIG.6 CAMSHAFT ASSY. (E05)



REF.NO.	PART NO	DESCRIPTION	Q'TY
E05-1	14200-Z100120-00A0	CAMSHAFT ASSY.	1
E05-4	12110-Z100110-00A0	VALVE	1
E05-5	12103-Z080110-00A0	SPRING, VALVE	2
E05-6	12107-Z080110-00A0	RETAINER , EXHAUST VALVE	1
E05-7	12104-Z080110-00A0	RATATOR, VALVE	1
E05-8	12101-Z080110-00A0	GUIDE, SEAL	1
E05-9	12112-Z080110-00A0	SEAT, VALVE SPRING	1
E05-10	14081-Z080110-00A0	TAPPET, VALVE	2
E05-11	14070-Z100110-00A0	LIFTER SUBASSEMBLY, VALVE	2
E05-12	14090-Z080110-00A0	PLATE SUBASSEMBLY, LIFTER STOPPER	1
E05-13	14313-Z010110-00A0	BOLT, VALVE ADJUSTING	2
E05-14	14311-Z080110-00A0	ROCKER, VALVE	2
E05-15	14314-Z010110-00A0	NUT, VALVE ADJUSTING	2
E05-16	14312-Z010110-00A0	NUT, VALVE LOCK	2
E05-17	12105-Z080110-00A0	RETAINER, VALVE SPRING	1

ACCESS 5500 XL - Stage V - GENERATOR

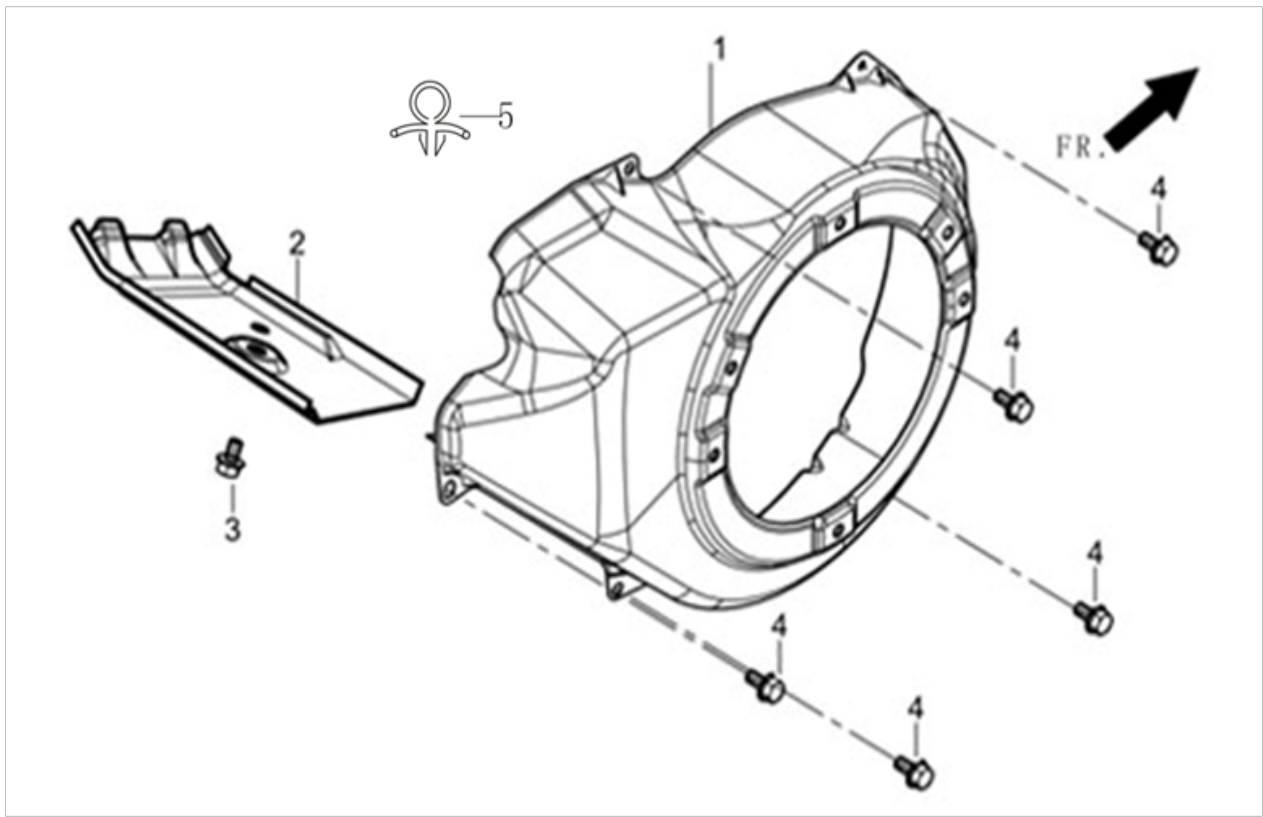
FIG.7 STARTER (E08)



REF.NO.	PART NO	DESCRIPTION	Q'TY
E08-1	28200-Z100610-H3A0	STARTER ASSY, RECOIL	1
E08-2	90001-0608-01A0	BOLT	3

ACCESS 5500 XL - Stage V - GENERATOR

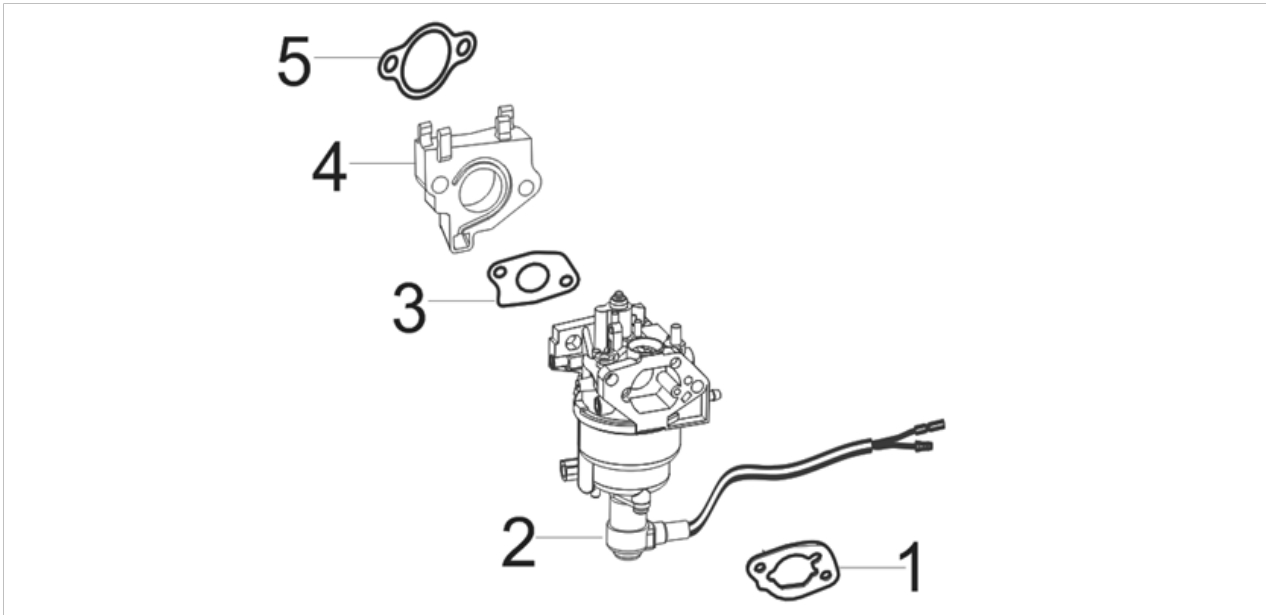
FIG.8 SHROUD (E14)



REF.NO.	PART NO	DESCRIPTION	Q'TY
E14-1	28110-Z100510-H3A0	SHROUD	1
E14-2	19304-Z110110-00A0	SHROUD, CYLINDER BODY	1
E14-3	90001-0612-01A0	BOLT	1
E14-4	90001-0612-01A0	BOLT	5
E14-5	90684-Z030210-00A0	CLIP	1

ACCESS 5500 XL - Stage V - GENERATOR

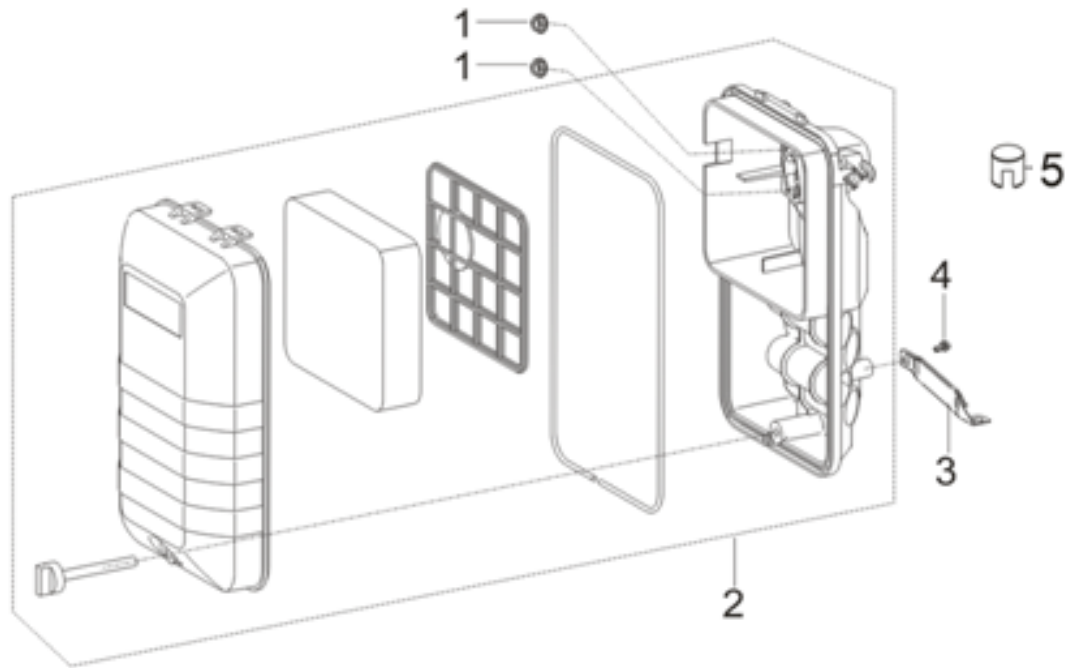
FIG.9 CARBURETOR ASSY.(E11)



REF.NO.	PART NO	DESCRIPTION	Q'TY
E11-1	17001-Z080110-00A0	GASKET, AIR CLEANER	1
E11-2	16100-Z191310-00A9	CARBURETOR ASSY.	1
E11-3	16001-Z100110-00A0	GASKET, CARBURETOR	1
E11-4	16003-Z100110-00A0	PLATE, CARBURETOR INSULATOR	1
E11-5	17002-Z100110-00A0	GASKET, INLET	1

ACCESS 5500 XL - Stage V - GENERATOR

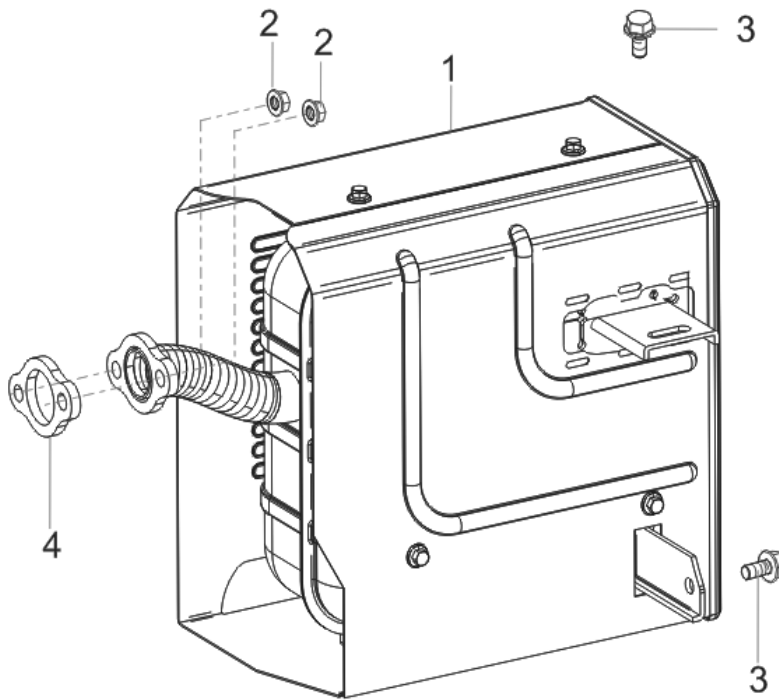
FIG.10 AIR CLEANER (F02)



REF.NO.	PART NO	DESCRIPTION	Q'TY
F02-1	90305-0600-31A0	NUT	2
F02-2	17100-Z101710-00A1	CLEANER, ,AIR	1
F02-3	17003-Y030210-00A0	SUPPORT , ATR CLEANER	1
F02-4	90001-0612-01A0	BOLT	1
F02-5	90722-Z010610-00A0	PLUG, END	1

ACCESS 5500 XL - Stage V - GENERATOR

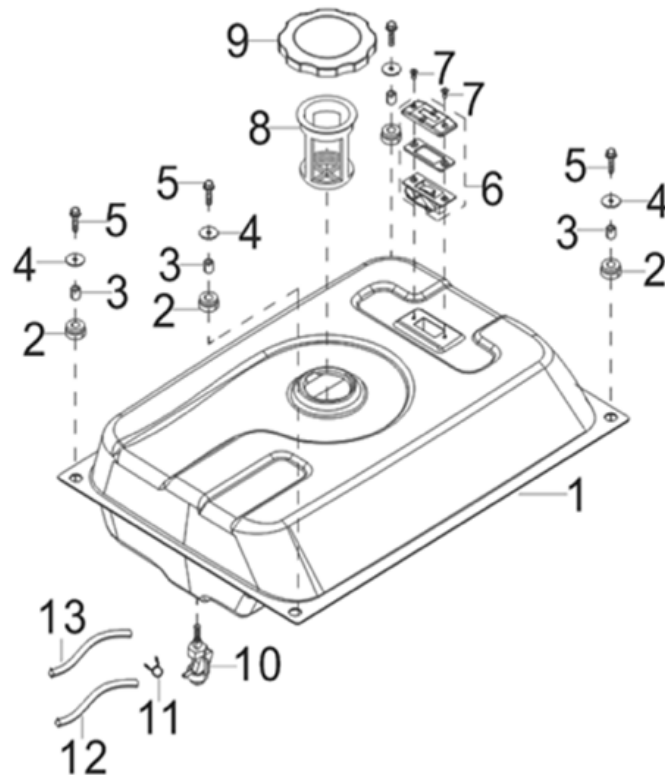
FIG.11 MUFFLER ASSY.(F04)



REF.NO.	PART NO	DESCRIPTION	Q'TY
F04-1	18100-Y720420-00A0	MUFFLER ASSEMBLY	1
F04-2	90303-0800-31A0	NUT	2
F04-3	90001-0816-01A0	BOLT	2
F04-4	18001-Z080110-00A0	GASKET, EXHAUST OUTLET	1

ACCESS 5500 XL - Stage V - GENERATOR

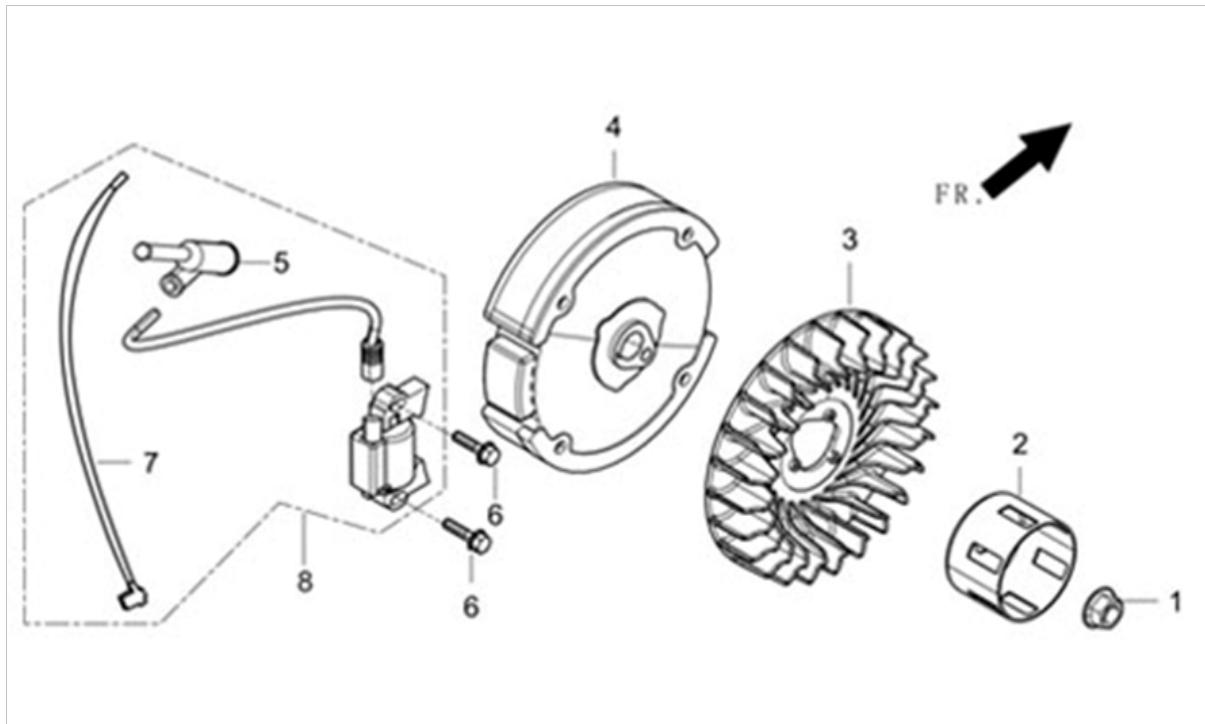
FIG.12 TANK, FUEL (F01)



REF.NO.	PART NO	DESCRIPTION	Q'TY
F01-1	16620-Y032810-H7AP	TANK, FUEL	1
F01-2	16601-Y020120-00A0	SLEEVE, FUEL TANK RUBBER	4
F01-3	90683-Y020110-00A0	BUSH	4
F01-4	90408-Y020110-00A0	WASHER, FLAT	4
F01-5	90007-0625-A1A0	BOLT	4
F01-6	37200-Y020210-H3A0	LEVELER ASSY, OIL	1
F01-7	90104-0512-51A0	BOLT	2
F01-8	16652-Y020120-00A0	STRAINER , FUEL	1
F01-9	16730-Y020130-H7A0	COVER, FUEL TANK	1
F01-10	16750-Y020210-00A0	COCK ASSY, FUEL	1
F01-11	90740-Z010210-00A0	COLLAR	2
F01-12	90686-Z080410-00A0	TUBE, FUEL	1
F01-13	30431-Y030110-00A0	JACKET,RUBBER	1

ACCESS 5500 XL - Stage V - GENERATOR

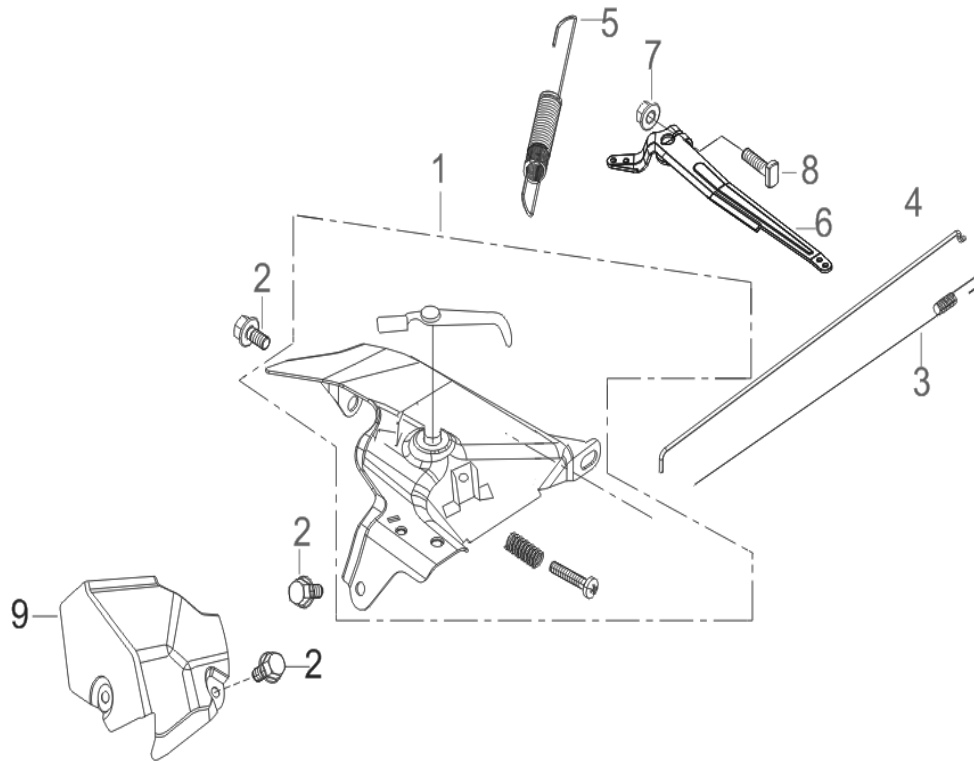
FIG.13 FLYWHEEL SUBASSEMBLY (E15)



REF.NO.	PART NO	DESCRIPTION	Q'TY
E15-1	13501-Z080110-00A0	NUT, FLYWHEEL	1
E15-2	28002-Z100210-00A0	PULLEY,STARTER	1
E15-3	19352-Z100210-00A0	IMPELLER	1
E15-4	13510-Z100120-00A0	FLYWHEEL SUBASSEMBLY	1
E15-6	90001-0628-01A0	BOLT	2
E15-8	30400-Z190210-00A0	COIL, IGNITION	1

ACCESS 5500 XL - Stage V - GENERATOR

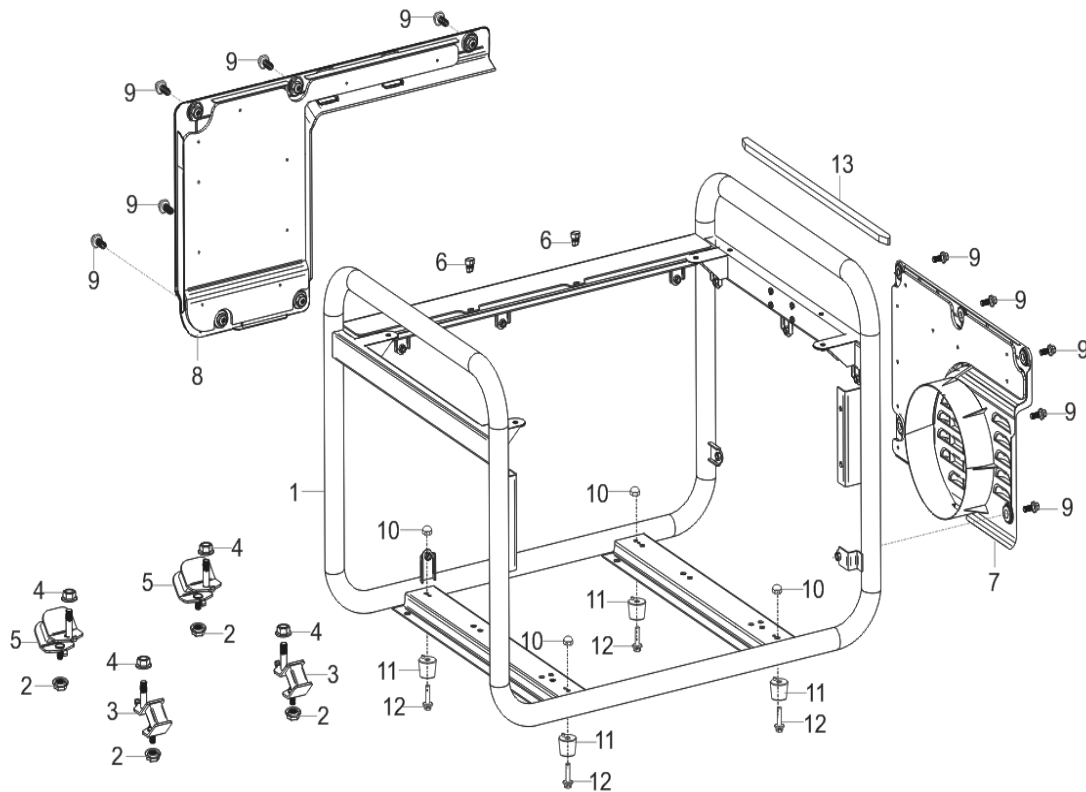
FIG.14 CONTORL ASSY.(E13)



REF.NO.	PART NO	DESCRIPTION	Q'TY
E13-1	16520-Z101410-00A0	CONTROL ASSY, THROTTLE	1
E13-2	90001-0610-01A0	BOLT	3
E13-3	16012-Z080110-00A0	SPRING, THROTTLE VALVE RETURNING	1
E13-4	16062-Z100110-00A0	ROD, GOVERNOR	1
E13-5	16063-Z100510-00A0	SPRING, GOVERNOR	1
E13-6	16070-Z100120-00A0	SUPPORT SUBASSEMBLY, GOVERNOR	1
E13-7	90305-0600-31A0	NUT	1
E13-8	16072-Z010110-00A0	BOLT, GOVERNOR SUPPORT	1
E13-9	16673-Y0P0110-00A0	protecting cover	1

ACCESS 5500 XL - Stage V - GENERATOR

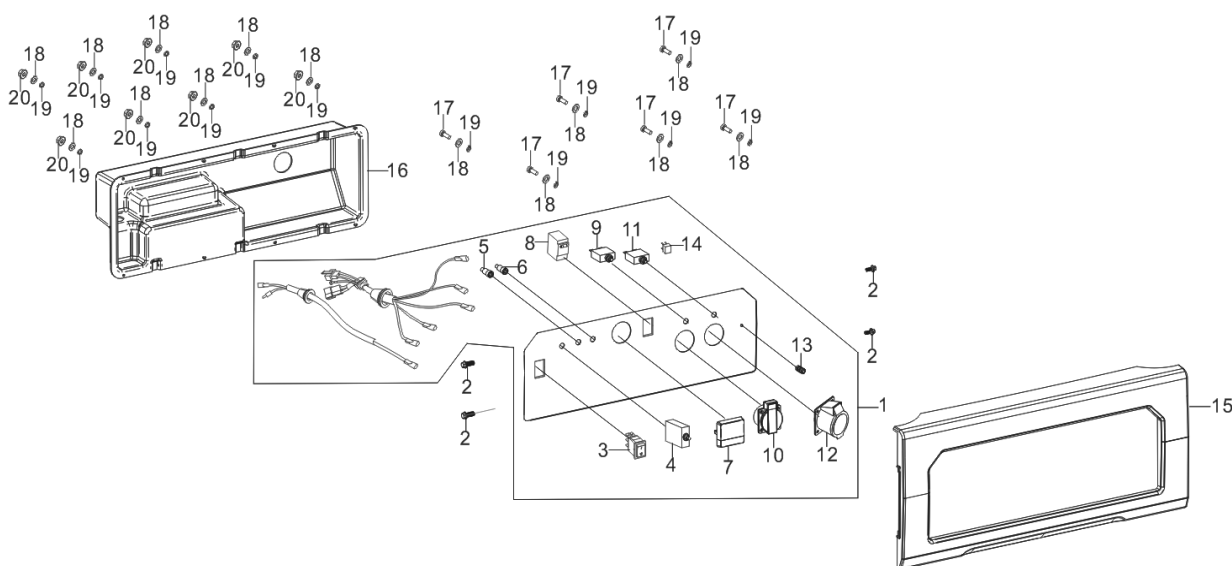
FIG.15 FRAME, ENGINE (F61)



REF.NO.	PART NO	DESCRIPTION	Q'TY
F61-1	51100-Y052510-H7A0	FRAME ASSY, ENGINE	1
F61-2	90306-1000-31A0	NUT	4
F61-3	51005HY030120-00A0	CUSHION, ENGINE FRAME	2
F61-4	90305-0800-31A0	NUT	4
F61-5	51012HY030120-00A0	CUSHION, ENGINE FRAME REAR	2
F61-6	16602-Y020130-00A0	GASKET, FUEL TANK RUBBER	2
F61-7	51025HY030110-Q2A0	DECORATIVE FRAME	1
F61-8	51026HY030110-Q2A0	DECORATIVE FRAME	1
F61-9	51138-Y030110-00A0	fixing bolt	10
F61-10	90305-0600-31A0	NUT	4
F61-11	51014HY020120-00A0	SEAT, ENGINE FRAME SHOCK ABSORPTION	2
F61-12	90001-0612-01A0	BOLT	4
F61-13	16603-Y030110-00A0	STRIP, FUEL TANK DAMPING	1

ACCESS 5500 XL - Stage V - GENERATOR

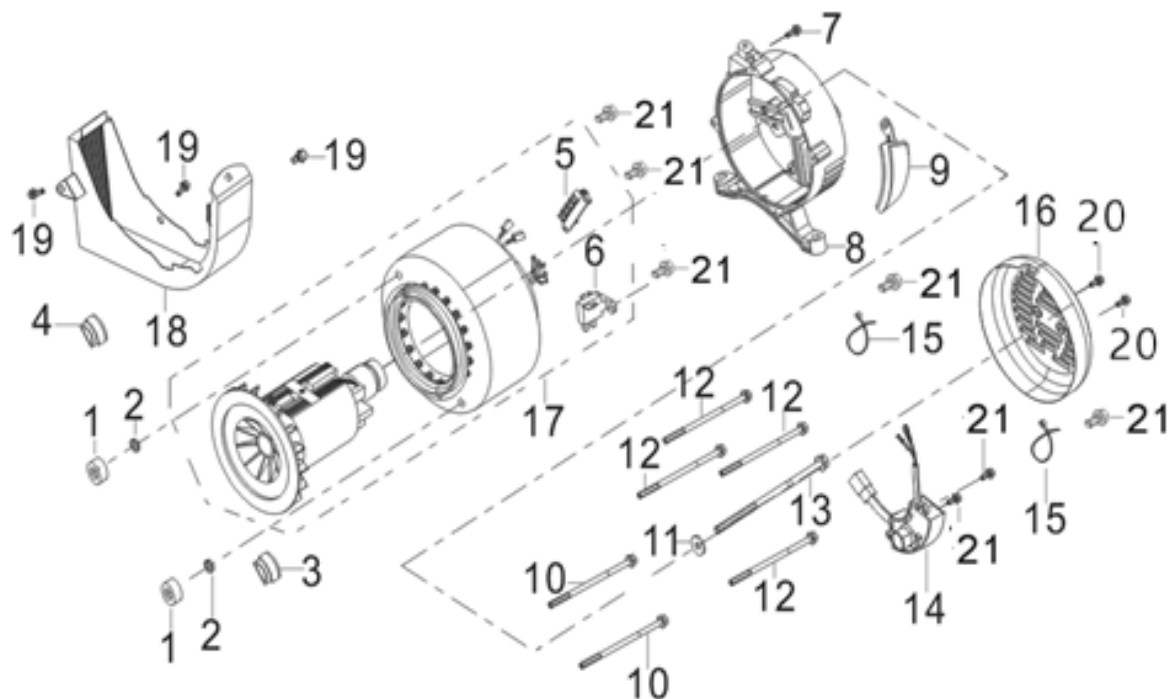
FIG.16 PANEL SUBASSEMBLY, CONTROL (F62)



REF.NO.	PART NO	DESCRIPTION	Q'TY
F62-1	35610-Y056710-H3A0	PANEL SUBASSEMBLY, CONTROL	1
F62-2	90007-0612-A1A0	BOLT	4
F62-3	35160-Y020110-00A0	SWITCH SUBASSEMBLY	1
F62-4	31234-Y020110-00A0	PROTECTOR, OVERCURRENT	1
F62-5	35633-Y020110-00A0	TERMINAL, POSITIVE ELECTRODE	1
F62-6	35634-Y020110-00A0	TERMINAL, NEGATIVE ELECTRODE	1
F62-7	37114-Y280110-00A0	VOLTMETER	1
F62-8	35648-Y050110-00A0	earth leakage protector	1
F62-9	31234-Y050110-00A0	PROTECTOR, OVERCURRENT	1
F62-10	35614-Y020110-00A0	SOCKET SUBASSEMBLY, POWER SUPPLY	1
F62-11	31234-Y120110-00A0	PROTECTOR, OVERCURRENT	1
F62-12	35614-Y240110-00A0	SOCKET SUBASSEMBLY, POWER SUPPLY	1
F62-13	35629-Y2V0210-00A0	TERMINAL SUBASSEMBLY, GROUNDING	1
F62-14	35621-Y020110-00A0	BRIDGE, RECTIFICATION	1
F62-15	35680-Y030310-Q2A0	SEAT, PANEL	1
F62-16	35601-Y030120-Q2A0	CASE, PANEL REAR	1
F62-17	90106-0410-51A0	BOLT	6
F62-18	90408-0400-E1A0	WASHER, FLAT	14
F62-19	90403-0400-01A0	WASHER, FLAT	14
F62-20	90305-0400-71A0	NUT	8

ACCESS 5500 XL - Stage V - GENERATOR

FIG.17 ROTOR/STATOR (F63)



REF.NO.	PART NO	DESCRIPTION	Q'TY
F63-1	31317-Y030110-00A0	NUT , STATOR	2
F63-2	90403-0500-01A0	WASHER, FLAT	2
F63-3	30023-Y030310-00A0	STOPPER, MOTOR RIGHT COVER	1
F63-5	31303HY020110-00A0	BLOCK, TERMINAL	1
F63-6	31320-Y030120-00A0	BRUSH SUBASSEMBLY, CARBON	1
F63-7	90001-0512-01A0	BOLT	1
F63-8	30021-Y030310-00A0	BRACKET, MOTOR	1
F63-9	30054-Y030110-Q2A0	water proof cap	1
F63-10	31316-Y030130-00A0	BOLT , STATOR	2
F63-11	90408-Y030110-00A0	WASHER, FLAT	1
F63-12	30048-Y030120-00A0	BOLT , STATOR	4
F63-13	30049-Y030120-00A0	BOLT , ROTOR	1
F63-14	30060-Y030120-00A0	REGULATOR, VOLTAGE	1
F63-15	90727-Y020110-00A0	BAND	2
F63-16	30022-Y030110-H3A0	COVER, MOTOR TAIL	1
F63-17	31300-Y050410-00A0	MOTOR ASSY.	1
F63-18	30024-Y030110-00A0	SHROUD, MOTOR	1
F63-19	90001-0510-01A0	BOLT	3
F63-20	90001-0512-01A0	BOLT	2
F63-21	90001-0516-01A0	BOLT	7